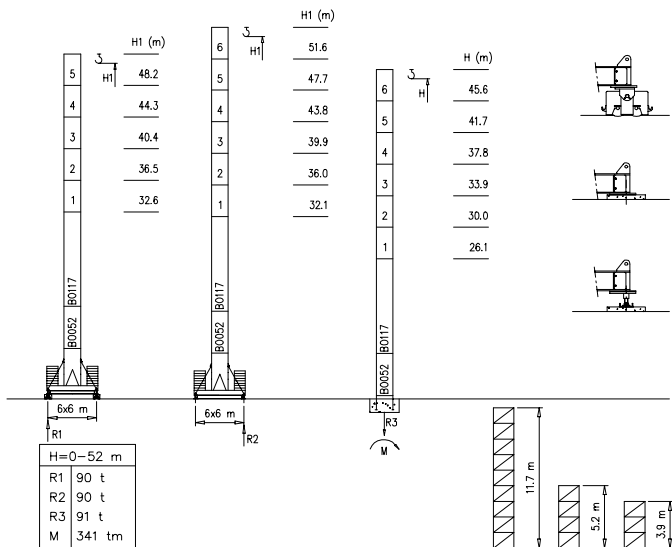


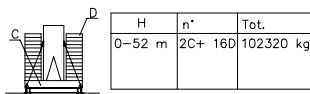
Torre/Reazioni - Masts/Reactions - Mat/Réactions - Mast/Eckdrücke - Mástil/Reacciones - Tramo/Reações

S2050

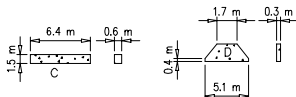
68.8 m → 80 m



Peso zavorra - Ballast weight - Poids du lest - Ballastgewicht - Peso de lastre

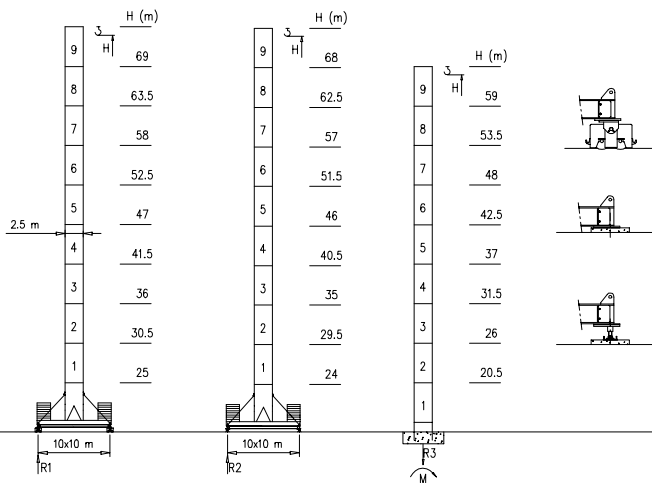


H	n*	Tot.
0-52 m	2C+ 16D	102320 kg



M2500

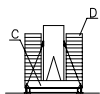
68.8 m → 80 m



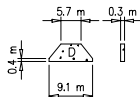
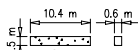
H=0-48 m	H>48m
R1 120 t	Contact us
R2 120 t	
R3 150 t	
M 634 tm	



Peso zavorra - Ballast weight - Poids du lest - Ballastgewicht - Peso de lastre



H	n°	Tot.
0-69 m	2C+ 8D	102320 kg



Curve di carico – Courbes de charges – Load diagrams – LastKurven – Curvas de cargas

Pmax 12000/6000 kg

	31900 kg	80 m	3.5	36	40	44	48	52	56	60	62	64	66	68	70	72	74	76	80	m	
			6000	6000	5400	4700	4200	3800	3500	3200	3000	2800	2700	2500	2400	2300	2200	2150	2000	kg	
	31900 kg	74.4 m	3.5	40	44	48	52	56	60	62	64	66	68	70	72	74.4					m
			6000	6000	5400	4900	4350	4000	3500	3300	3200	3050	2900	2800	2700	2600	kg				
	29000 kg	68.8 m	3.5	44	48	52	56	60	62	64	66	68.8								m	
			6000	6000	5450	4900	4300	4000	3700	3500	3400	3300	kg								
	26100 kg	63.2 m	3.5	44	48	52	56	60	62	63.2								m			
			6000	6000	5500	5000	4500	4100	3900	3700	kg										

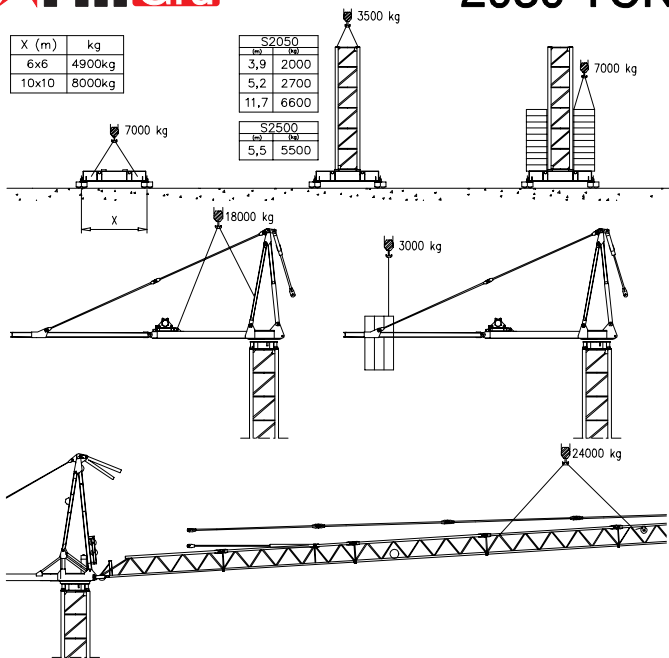
Pmax 12000/6000 kg

	31900 kg	80 m	3.5	18	22	26	28	32	36	40	44	48	52	56	60	62	64	66	68	70	72	74	76	80	m
			12000	11000	8500	7500	6800	6000	5400	4700	4200	3800	3500	3200	3000	2800	2700	2500	2400	2300	2200	2150	2000	kg	
	31900 kg	74.4 m	3.5	21	22	26	28	32	36	40	44	48	52	56	60	62	64	66	68	70	72	74.4			m
			12000	11000	9800	9000	7800	7000	6000	5400	4900	4350	4000	3500	3300	3200	3050	2900	2800	2700	2600	kg			
	29000 kg	68.8 m	3.5	24	26	28	32	36	40	44	48	52	56	60	62	64	66	68.8				m			
			12000	11000	10000	9000	7800	7000	6000	5450	4900	4300	4000	3700	3500	3400	3300	kg							
	26100 kg	63.2 m	3.5	24	26	28	32	36	40	44	48	52	56	60	62	63.2				m					
			12000	11000	10500	9200	8000	7000	6000	5500	5000	4500	4100	3900	3700	kg									

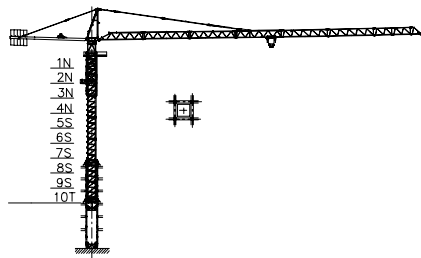
X (m)	kg
6x6	4900kg
10x10	8000kg

S2050	
mm	kg
3,9	2000
5,2	2700
11,7	6600

S2500	
mm	kg
5,5	5500



Gru in cavedito - Climbing crane - Télescopage sur dalles - Kletterkrane in Gebäuden - Telescopage gruas trepadoras - Telescopagem sobre lajes



Number of tower section	H (m.)
5S+2N+T	33.40
5S+3N+T	37.30
5S+4N+T	41.20

N = Standard mast element
 T = Telescopic element
 S = Special mast element

Meccanismi – Mechanisms – Mécanismes – Antriebe – Mecanismos

Sollevamento V45.60 Hoisting Elevaci6n			1a	2 m/min	6000 kg	33 kW	V45.60 61 kVA
			2a	20 m/min	6000 kg		
			3a	31 m/min	5000 kg		
			4a	46 m/min	3600 kg		
			5a	60 m/min	2600 kg		
			1a	1 m/min	12000 kg		
			2a	10 m/min	12000 kg		
			3a	15 m/min	10000 kg		
			4a	23 m/min	7200 kg		
			5a	30 m/min	5200 kg		
Sollevamento V80.100 Hoisting Elevaci6n			1a	2 m/min	6000 kg	60 kW	V80.100 93 kVA
			2a	40 m/min	6000 kg		
			3a	60 m/min	4000 kg		
			4a	80 m/min	3000 kg		
			5a	100 m/min	2600 kg		
			1a	1 m/min	12000 kg		
			2a	20 m/min	12000 kg		
			3a	30 m/min	8000 kg		
			4a	40 m/min	6000 kg		
			5a	50 m/min	5200 kg		
Carrello Trolleying Distribuci6n			1a	5 m/min	12000 kg	5.5 kW	Potenza elettrica necessaria Puissance électrique nécessaire Necessary electric power Anschlusswert Potenza
			2a	40 m/min	12000 kg		
			3a	80 m/min	6000 kg		
Rotazione Slewing Orientaci6n			1a	0 → 0.2	giri/min tr/min	8.8 kW @ 1200rpm n° 4 x 2.2 kW	
			2a	0 → 0.6	rp/min		
			3a	0 → 0.9			
Traslazione Travelling Traslaci6n			1a	0 → 5	9 kW		
			2a	0 → 20			

Rete elettrica – Réseau – Mains supply – Netzstrom – Red – Rede electrica

400V – 50 Hz



FMgru s.r.l.

Via Emilia 11-29010 Pontenure PC ITALY
tel. 0523/510446 ric.aut. fax 0523/510365
www.fmgru.com e-mail: info@fmgru.com

2000/14/CE
FEM 1.001



Documento commerciale non contrattuale
Für technische Informationen, siehe die
entsprechenden Anweisungen.

Unverbindliches Vertriebsdokument.
Für technische Informationen, siehe die
entsprechenden Anweisungen.

This commercial document is not legally
binding. For any technical information, please
refer to the corresponding instructions.

Documento commerciale non contrattuale
Für technische Informationen, siehe die
entsprechenden Anweisungen.

Code: 15ICAS17M87AG

Ed. Data: [] Rev. Data: []

Il: 06.06.03/06.06.03