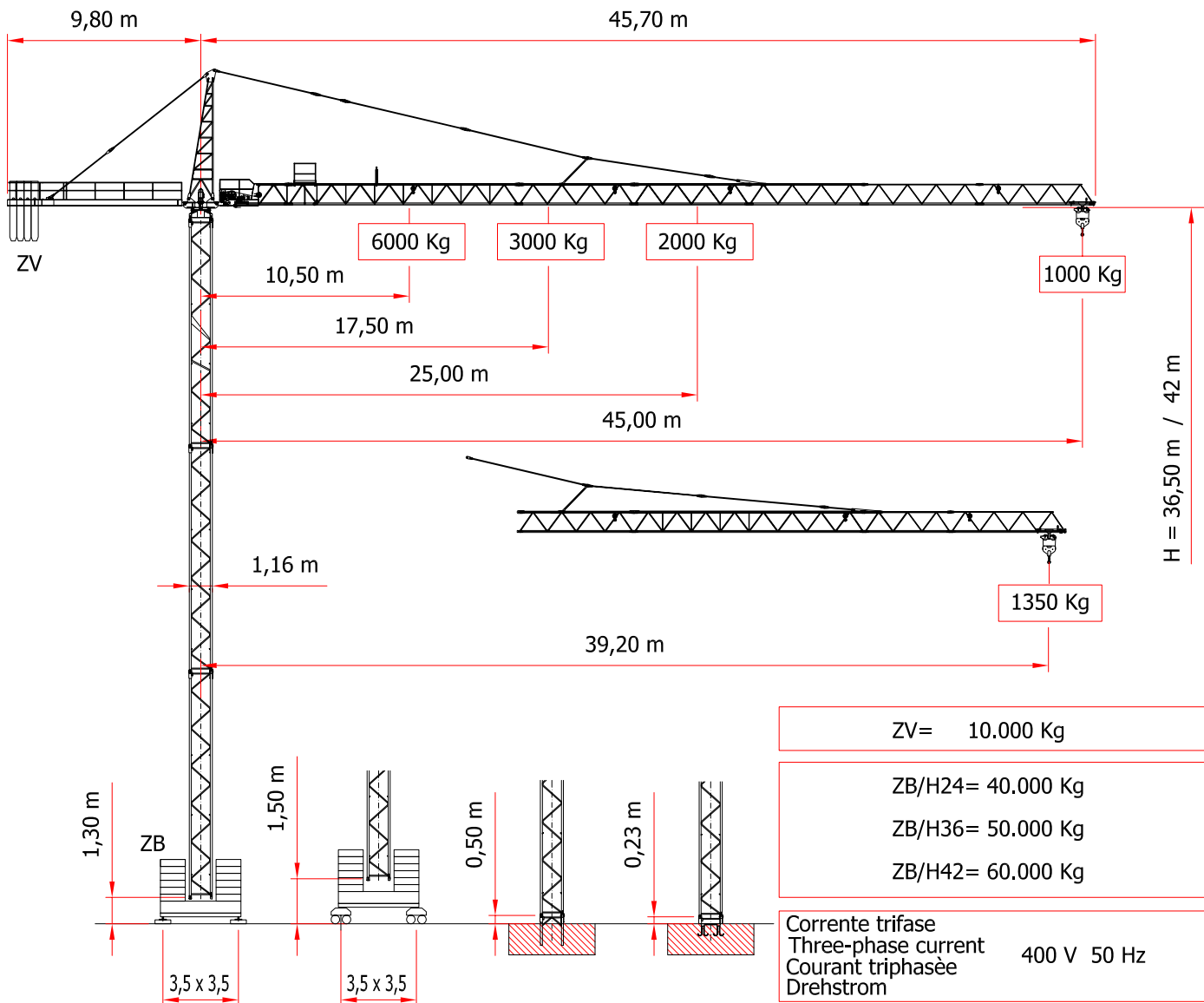


**SERIE CB 4510**

**CITY 45/1000**



ZV= 10.000 Kg

ZB/H24= 40.000 Kg

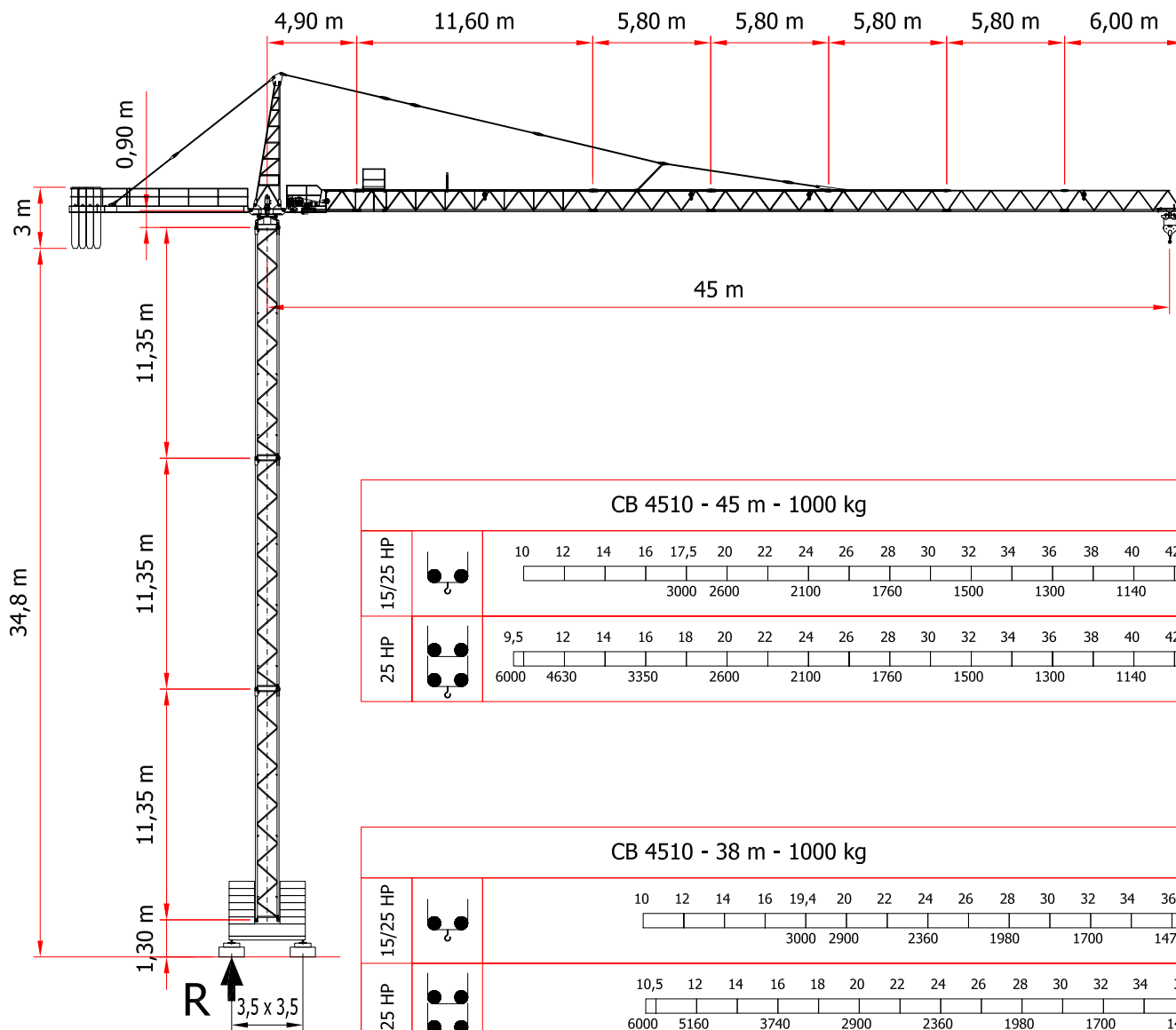
ZB/H36= 50.000 Kg

ZB/H42= 60.000 Kg

Corrente trifase  
 Three-phase current  
 Courant triphasée  
 Drehstrom 400 V 50 Hz

Potenza installata  
 Power set up  
 Puissance installée  
 Kraftbedarf KW 20 (Argano 15 HP)  
 KW 28 (Argano 25 HP)

	HP 15				HP 25					
	↑↓		Kg	m/1'	↑↓		Kg	m/1'		
			1500	40			1500	60		30/60 m/1' 2,2/2,2 kW INVERTER
			3000	20			3000	30		
			3000	5			3000	7		
			-	-			3000	30		0:1,1 rpm 60 Nm INVERTER
			-	-			6000	15		
			-	-			6000	3,5		
		-	-			-	-	15 m/1' 2x3 kW INVERTER		
		-	-			-	-			
		-	-			-	-			



**CB 4510**

REAZIONE  
**R = 48.000 Kg**  
 REACTION

DIN 15018 H<sub>1</sub> B<sub>2</sub> B<sub>3</sub> DIN 15019

CON RISERVA DI MODIFICHE  
 SUBJECT TO MODIFICATION  
 RESERVA DE MODIFICACIONES  
 MODIFICATIONS RESERVEES  
 ANDERUNGEN VORBEHALTEN

