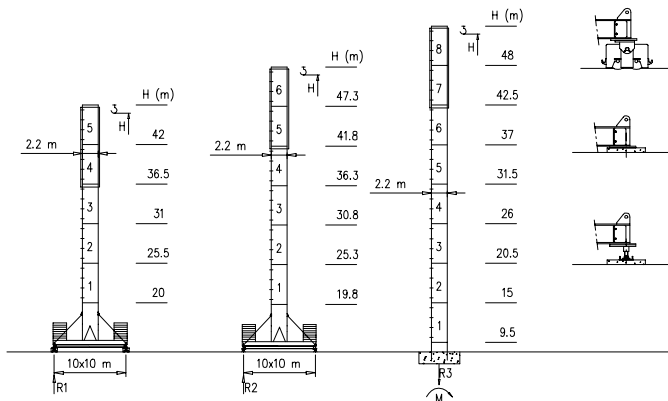


- S2200 – 2.20x2.20 m
- M2500 – 2.50x2.50 m

Torre/Reazioni - Masts/Reactions - Mat/Réactions - Maste/Eckdrücke - Mástil/Reacciones - Tramo/Reacções

S2200

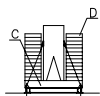
47.6 m → 70 m



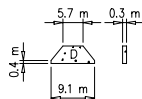
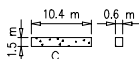
| | |
|----------|--------|
| H=0-48 m | |
| R1 | 120 t |
| R2 | 120 t |
| R3 | 150 t |
| M | 634 tm |



Peso zavorra - Ballast weight - Poids du lest - Ballastgewicht - Peso de lastre

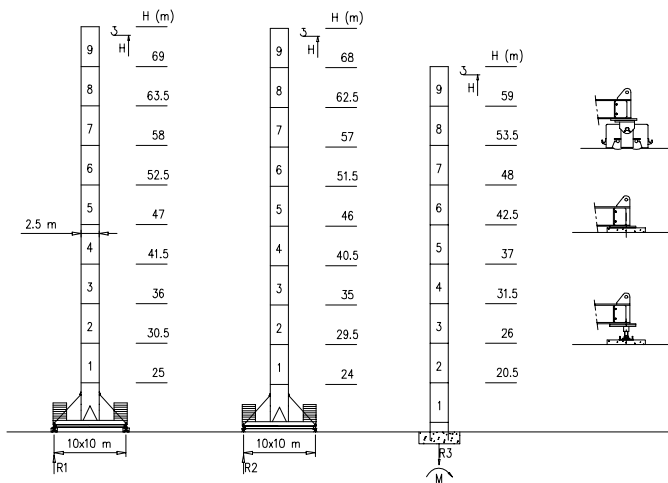


| H | n* | Tot. |
|--------|--------|-----------|
| 0-48 m | 2C+ 8D | 102320 kg |



M2500

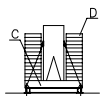
47.6 m → 70 m



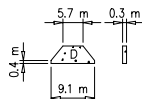
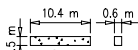
| H=0-48 m | H>48m |
|----------|------------|
| R1 120 t | Contact us |
| R2 120 t | |
| R3 150 t | |
| M 634 tm | |



Peso zavorra - Ballast weight - Poids du lest - Ballastgewicht - Peso de lastre


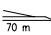

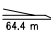

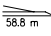
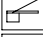
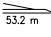

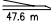


| H | n* | Tot. |
|--------|--------|-----------|
| 0-69 m | 2C+ 8D | 102320 kg |



Curve di carico - Courbes de charges - Load diagrams - LastKurven - Curvas de cargas

Pmax 16000/8000 kg

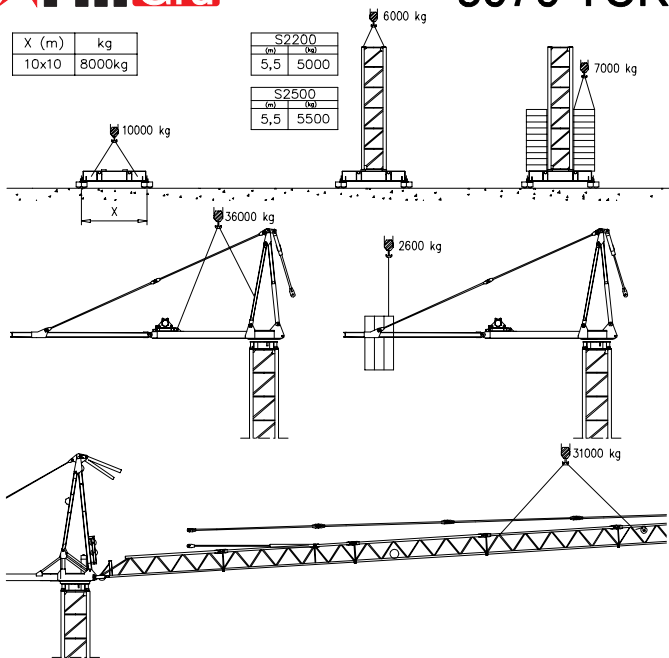
| | | | | | | | | | | | | | | | | | | | | | | | | | | |
|--|----------|---|--------|-------|------|------|------|------|------|------|------|------|------|------|------|------|------|------|------|------|------|------|------|----|----|---|
|  | 32630 kg |  | 70 m | 3.5 | 30 | 32 | 34 | 36 | 38 | 40 | 42 | 44 | 46 | 48 | 50 | 52 | 54 | 56 | 58 | 60 | 62 | 64 | 66 | 68 | 70 | m |
| | | | 16000 | 15800 | 4800 | 3900 | 3000 | 2400 | 1400 | 1000 | 0600 | 0000 | 9700 | 9200 | 8800 | 8500 | 8100 | 7800 | 7500 | 7300 | 6700 | 6400 | 6000 | kg | | |
|  | 30120 kg |  | 64.4 m | 3.5 | 30 | 32 | 34 | 36 | 38 | 40 | 42 | 44 | 46 | 48 | 50 | 52 | 54 | 56 | 58 | 60 | 62 | 64.4 | m | | | |
| | | | 16000 | 15800 | 4800 | 3900 | 3000 | 2400 | 1400 | 1000 | 0600 | 0000 | 9700 | 9200 | 8800 | 8500 | 8100 | 7800 | 7500 | 7200 | kg | | | | | |
|  | 27610 kg |  | 58.8 m | 3.5 | 30 | 32 | 34 | 36 | 38 | 40 | 42 | 44 | 46 | 48 | 50 | 52 | 54 | 56 | 58.8 | m | | | | | | |
| | | | 16000 | 15800 | 4800 | 3900 | 3000 | 2400 | 1400 | 1000 | 0600 | 0000 | 9700 | 9200 | 8800 | 8500 | 8100 | kg | | | | | | | | |
|  | 27610 kg |  | 53.2 m | 3.5 | 30 | 32 | 34 | 36 | 38 | 40 | 42 | 44 | 46 | 48 | 50 | 52 | 53.2 | m | | | | | | | | |
| | | | 16000 | 15800 | 4800 | 3900 | 3000 | 2400 | 1400 | 1000 | 0600 | 0000 | 9700 | 9200 | 9000 | kg | | | | | | | | | | |
|  | 25100 kg |  | 47.6 m | 3.5 | 30 | 32 | 34 | 36 | 38 | 40 | 42 | 44 | 46 | 47.6 | m | | | | | | | | | | | |
| | | | 16000 | 15800 | 4800 | 3900 | 3000 | 2400 | 1400 | 1000 | 0600 | 0000 | kg | | | | | | | | | | | | | |



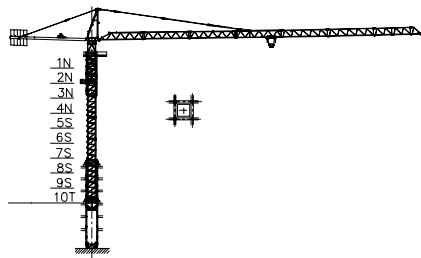
| | |
|-------|--------|
| X (m) | kg |
| 10x10 | 8000kg |

| | |
|-------|------|
| S2200 | |
| (m) | (kg) |
| 5,5 | 5000 |

| | |
|-------|------|
| S2500 | |
| (m) | (kg) |
| 5,5 | 5500 |



Gru in cavetto - Climbing crane - Téléscoope sur dalles - Kletterkrane in Gebäude - Telescopage gruas trepadoras - Telescopagem sobre lajes



| Number of tower section | H (m.) |
|-------------------------|--------|
| 5S+2N+T | 33.40 |
| 5S+3N+T | 37.30 |
| 5S+4N+T | 41.20 |

N = Standard mast element
 T = Telescopic element
 S = Special mast element

Meccanismi – Mechanisms – Mécanismes – Antriebe – Mecanismos

| | | | | | | | |
|--|-------------|--|----|-----------|--------------------|-----------------------------------|---|
| Sollevamento V60.60 Hoisting Elevaci6n | ▲ ● ▼ | | 1a | 2 m/min | 8000 kg | 45 kW | V60.60 75 kVA |
| | | | 2a | 20 m/min | 8000 kg | | |
| | | | 3a | 31 m/min | 7000 kg | | |
| | | | 4a | 46 m/min | 4500 kg | | |
| | | | 5a | 60 m/min | 3000 kg | | |
| | | | 1a | 1 m/min | 16000 kg | | |
| | | | 2a | 10 m/min | 16000 kg | | |
| | | | 3a | 15 m/min | 14000 kg | | |
| | | | 4a | 23 m/min | 9000 kg | | |
| | | | 5a | 30 m/min | 6000 kg | | |
| Sollevamento V100.100 Hoisting Elevaci6n | ▲ ● ▼ | | 1a | 4 m/min | 8000 kg | 75 kW | V100.100 110 kVA |
| | | | 2a | 44 m/min | 8000 kg | | |
| | | | 3a | 68 m/min | 5000 kg | | |
| | | | 4a | 82 m/min | 4000 kg | | |
| | | | 5a | 100 m/min | 3000 kg | | |
| | | | 1a | 2 m/min | 16000 kg | | |
| | | | 2a | 22 m/min | 16000 kg | | |
| | | | 3a | 34 m/min | 10000 kg | | |
| | | | 4a | 41 m/min | 8000 kg | | |
| | | | 5a | 50 m/min | 6000 kg | | |
| Carrello Trolleying Distribuci6n | ◀ ▶ ↔ | | 1a | 5 m/min | 16000 kg | 5.5 kW | Potenza elettrica necessaria Puissance électrique nécessaire Necessary electric power Anschlusswert Potencia |
| | | | 2a | 40 m/min | 16000 kg | | |
| | | | 3a | 80 m/min | 8000 kg | | |
| Rotazione Slewing Orientaci6n | | | 1a | 0 → 0.2 | giri/min tr/min | 8.8 kW @ 1200rpm n° 4 x 2.2 kW | |
| | | | 2a | 0 → 0.6 | rp/min | | |
| | | | 3a | 0 → 0.9 | | | |
| Traslazione Travelling Traslaci6n | ◀ ▶ | | 1a | 0 → 5 | 15 kW | | |
| | | | 2a | 0 → 20 | | | |

Rete elettrica – Réseau – Mains supply – Netzstrom – Red – Red electrica 400V – 50 Hz

FM Gru s.r.l.
 via Emilia 11-29010 Pontenure PC ITALY
 tel. 0523/510446 ric.cst. fax 0523/510355
 www.fmgru.com e-mail: info@fmgru.com

FEM 1.001
 2000/14/CE



Documento commerciale non contrattuale
 Per tutte le informazioni tecniche riferirsi
 alle corrispondenti istruzioni

Unverbindliches Vertriebsdokument.
 Für technische Informationen, siehe die
 entsprechenden Anweisungen.

This commercial document is not legally
 binding. For any technical information, please
 refer to the corresponding instructions.

Documento comercial no contractual
 Para cualquier informaci6n t6cnica,
 ver la netice correspondiente.

Code: 15ICAS7MB1AD
 Ed. Data: rev. Data:
 11-06-05-03/01 05-06-03