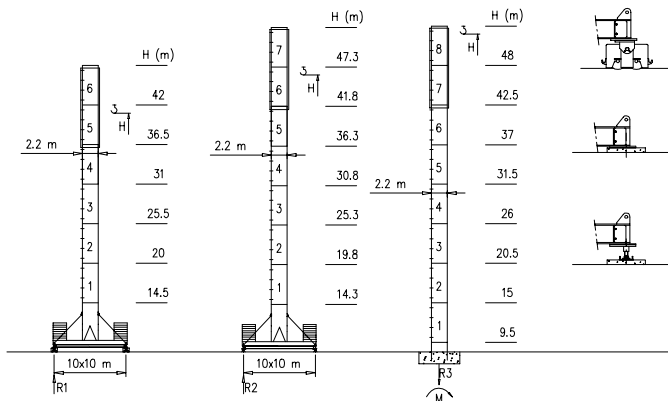


Torre/Reazioni - Masts/Reactions - Mat/Réactions - Maste/Eckdrücke - Mástli/Reacciones - Tramo/Reacções

S2200

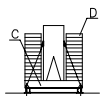
47.6 m → 70 m



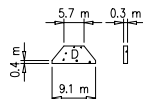
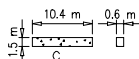
H=0-48 m	
R1	120 t
R2	120 t
R3	150 t
M	634 tm



Peso zavorra - Ballast weight - Poids du lest - Ballastgewicht - Peso de lastre



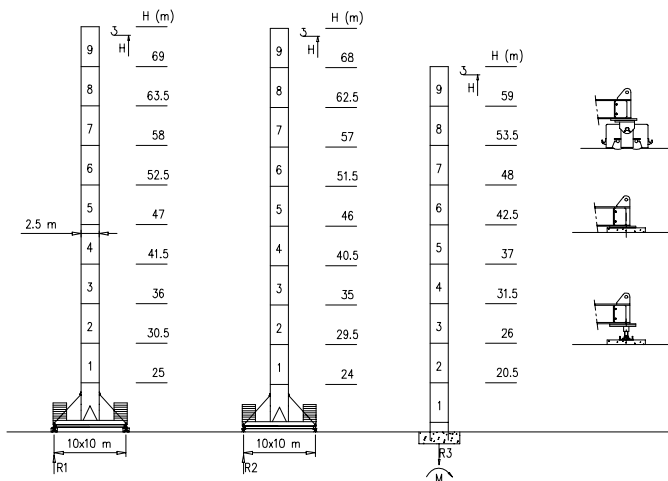
H	n*	Tot.
0-48 m	2C+ 8D	102320 kg



Torre/Reazioni - Masts/Reactions - Mat/Réactions - Masto/Eckdrücke - Mástil/Reacciones - Tramo/Reacções

M2500

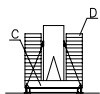
47.6 m → 70 m



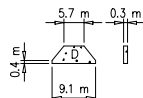
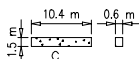
H=0-48 m	H>48m
R1 120 t	Contact us
R2 120 t	
R3 150 t	
M 634 tm	



Peso zavorra - Ballast weight - Poids du lest - Ballastgewicht - Peso de lastre

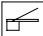
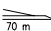

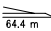
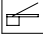
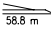

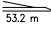
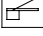
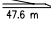


H	n°	Tot.
0-69 m	2C+ 8D	102320 kg



Curve di carico - Courbes de charges - Load diagrams - LastKurven - Curvas de cargas

Pmax 20000/10000 kg

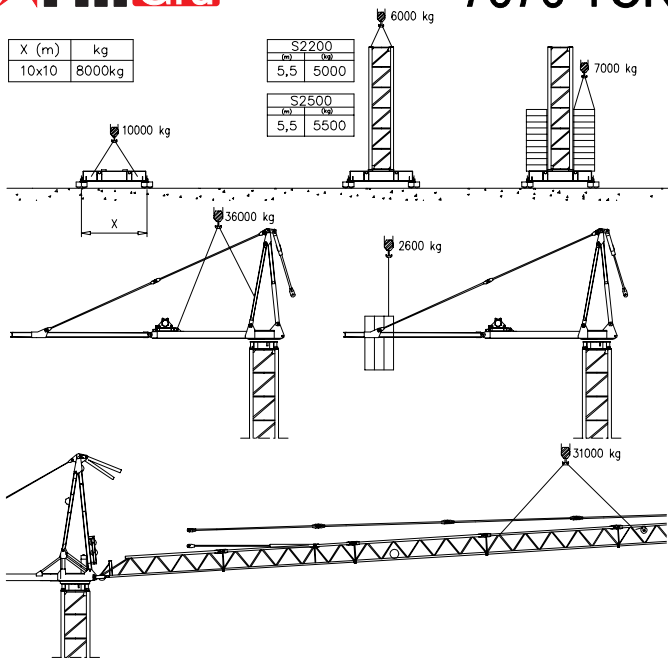
	32630 kg		70 m	3.5	30	32	34	36	38	40	42	44	46	48	50	52	54	56	58	60	62	64	66	68	70	m
			20000	18600	7500	6000	5500	4680	3800	3000	2500	2000	1000	0800	0500	0000	0000	9600	8800	8400	8000	7800	7500	7000	kg	
	30120 kg		64.4 m	3.5	30	32	34	36	38	40	42	44	46	48	50	52	54	56	58	60	62	64.4				m
			20000	18600	7500	6000	5500	4680	3800	3000	2500	2000	1000	0800	0500	0000	9600	8800	8400	8000	7800	7500	7000	kg		
	27610 kg		58.8 m	3.5	30	32	34	36	38	40	42	44	46	48	50	52	54	56	58.8				m			
			20000	18600	7500	6000	5500	4680	3800	3000	2500	2000	1000	0800	0500	0000	9500	kg								
	27610 kg		53.2 m	3.5	30	32	34	36	38	40	42	44	46	48	50	52	53.2				m					
			20000	18600	7500	6000	5500	4680	3800	3000	2500	2000	1000	0800	0000	kg										
	25100 kg		47.6 m	3.5	30	32	34	36	38	40	42	44	46	47.6				m								
			20000	18600	7500	6000	5500	4680	3800	3000	2500	2000	kg													



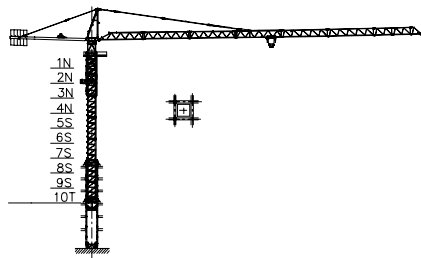
X (m)	kg
10x10	8000kg

S2200	
(m)	(kg)
5,5	5000

S2500	
(m)	(kg)
5,5	5500



Grú in cavedito - Climbing crane - Téléscofage sur dalles - Kletterkrane in Gebäude - Telescofage gruas trepadoras - Telescofagem sobre lajes



Number of tower section	H (m.)
5S+2N+T	33.40
5S+3N+T	37.30
5S+4N+T	41.20

N = Standard mast element
T = Telescopic element
S = Special mast element

Meccanismi – Mechanisms – Mécanismes – Antriebe – Mecanismos

Sollevamento V75.60 Hoisting Elevación	▲ ● ▼		1a	2 m/min	10000 kg	55 kW	V75.60 89 kVA
			2a	20 m/min	10000 kg		
			3a	30 m/min	8500 kg		
			4a	46 m/min	5500 kg		
			5a	60 m/min	4500 kg		
			1a	1 m/min	20000 kg		
			2a	10 m/min	20000 kg		
			3a	15 m/min	17000 kg		
			4a	23 m/min	11000 kg		
			5a	30 m/min	9000 kg		
Sollevamento V130.100 Hoisting Elevación	▲ ● ▼		1a	4 m/min	10000 kg	95 kW	V130.100 136 kVA
			2a	44 m/min	10000 kg		
			3a	62 m/min	8000 kg		
			4a	78 m/min	6000 kg		
			5a	100 m/min	4500 kg		
			1a	2 m/min	20000 kg		
			2a	22 m/min	20000 kg		
			3a	31 m/min	16000 kg		
			4a	39 m/min	12000 kg		
			5a	50 m/min	9000 kg		
Carrello Trolleying Distribución	◀ ▶		1a	5 m/min	20000 kg	7.5 kW	Potenza elettrica necessaria Puissance électrique nécessaire Necessary electric power Anschlusswert Potencia
Rotazione Slewing Orientación			2a	40 m/min	20000 kg		
			3a	80 m/min	10000 kg		
			1a	0 → 0.2	giri/min tr/min rp/min	8.8 kW @ 1200rpm n° 4 x 2.2 kW	
2a	0 → 0.6						
3a	0 → 0.9						
Traslazione Travelling Traslación	◀ ▶		1a	0 → 5	15 kW		
			2a	0 → 20			

Rete elettrica – Réseau – Mains supply – Netzstrom – Red – Rede electrica

400V – 50 Hz



FMgru s.r.l.

via Emilia 11-29010 Pontenure PC ITALY
tel. 0523/510446 ric.aut. fax 0523/510355
www.fmgru.com e-mail: info@fmgru.com

FEM 1.001

2000/14/CE



Documento commerciale non contrattuale
Für alle Informationen technische rufen Sie
alle correspondents Istruzioni!

Unverbindliches Vertriebsdokument.
Für technische Informationen, siehe die
entsprechenden Anweisungen.

This commercial document is not legally
binding. For any technical information, please
refer to the corresponding instructions.

Documento commerciale non contrattuale
Para cualquier información técnica,
ver la redicte correspondiente.

Code: 15ICAS17M846

Ed. Data: [] Rev. Data: []

Il: 05.05.03/0 05.05.03