

**MECCANISMI/MECHANISMS A 694 B5 - A5 - S5 - CITY. 5**

Diagram	HP	M/1'	Diagram	HP	M/1'	T	
		3/4 (MRC 110)		25/50		15/15/4 (194 - 3VS)	I
	3,5 ♦(SECAS III)	0 ▶60 (MICRO 0 - 5)		II	22		2,5
	5 (SECAS III)	0 ▶0,8 (MICRO 0 - 0,1) (G/1'-REV/1')		III	44		1,25
	2 x 5,5 (SECAS III)	0 ▶25 (MICRO 0 - 3)		♦	I	2,5	5
				II	11	5	
				III	22	2,5	
				♦(MULTILIFT)	0 ▶60 3/7/22 44/60	2,5/2,5/2,5 1,25/1	
					0 ▶30 1,5/3,5/11 22/30	5/5/5 2,5/2	

ALIMENTAZIONE/POWER SUPPLY	V	400/50HZ	RADIOCOMANDO/RADIOCONTROL
ASSORBIMENTO/MAINS SUPPLY	KW	25/15♦	SET MONTAGGIO/ERECTION SET ♦
CABINA PENSILE/SLEWING CAB		♦	TIRO IN QUARTA/FOUR FALLS REEVING ♦
CONTRAPPESO/COUNTERWEIGHT	~T	16,9	ZAVORRA BASE/BASE BALLAST ~T 22▶68♦

dati non impegnativi e modifiche riservate / subject to modifications

o richiesta / on request ♦

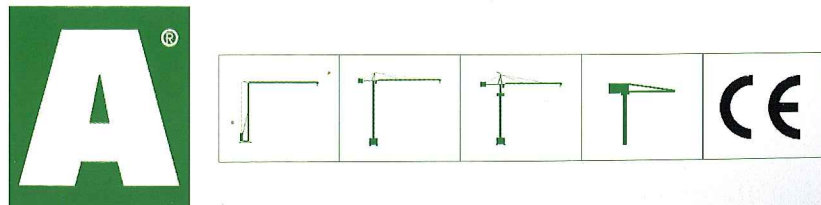
**CARATTERISTICHE PRINCIPALI**

STRUTTURE IN ACCIAIO FE 510C A NORME DIN • ACCOPPIAMENTI SPINATI, SEDI ALESATE • PERNERIA, FUNI, PIATTAFORME E PASSERELLE AEREE ZINCATE • RUOTISMI SU CUSCINETTI E RIDUTTORI EPICICLOIDALI IN PRESA DIRETTA • RALLA PRECARICATA E TRATTATA TERMICAMENTE, CON LUBRIFICAZIONE CENTRALIZZATA (ALFALUB) • ROTAZIONE ELETTRONICA A REGOLAZIONE CONTINUA DI VELOCITÀ (SECAS III) • DISTRIBUZIONE A DUE VELOCITÀ, O SU RICHIESTA, A REGOLAZIONE CONTINUA DI VELOCITÀ (SECAS III) • TRASLAZIONE ELETTRONICA A REGOLAZIONE CONTINUA DI VELOCITÀ (SECAS III) • RUOTE DI TRASLAZIONE IN ACCIAIO FUCINATO, TRATTATE TERMICAMENTE • PIATTAFORMA GIREVOLE, CON I PRINCIPALI GRUPPI ELETTROMECCANICI A BORDO • TIRO IN QUARTA • CABINA PENSILE ROTANTE • ARMADIO ELETTRICO IN ACCIAIO INOX A NORME CEI • VERNICIATURA AD IMMERSIONE CON DOPPIA MANO DI SMALTO AL CROMO-ZINCO (DEPAS) • DISPOSITIVI DI SICUREZZA SECONDO LA DIRETTIVA MACCHINE EUROPEA "CE".

**MEAN FEATURES**

ST 510C STEEL STRUCTURES CONFORM TO DIN RULES • PINED CONNECTIONS, BORED SEATS • GALVANIZED PINS, ROPES, PLATFORMS AND FOOTPATHS • DRIVING MECHANISMS ON BEARINGS AND DIRECT DRIVE PLANETARY GEARS • PRELOADED AND HEAT TREATED SLEWING RING WITH CENTRALISED LUBRICATION (ALFALUB) • ELECTRONIC SLEWING WITH CONTINUOUS SPEED ADJUSTMENT (SECAS III) • TWO-SPEED TROLLEY WINCH, OR ON REQUEST WITH CONTINUOUS SPEED ADJUSTMENT (SECAS III) • ELECTRONIC TRAVELLING WITH CONTINUOUS SPEED ADJUSTMENT (SECAS III) • FORGED STEEL TRAVELLING WHEELS HEAT TREATED • SLEWING PLATFORM WITH MAIN ELECTRO - MECHANICAL GROUPS ON BOARD • FOUR FALLS REEVING • SLEWING OPERATOR'S CAB • STAINLESS STEEL ELECTRICAL BOARD PANEL CONFORMS TO CEI RULES • DIPPING PAINTING WITH DOUBLE COAT OF CHROMIUM ZINC ENAMEL (DEPAS) • SAFETY DEVICES ACCORDING TO "CE" EUROPEAN MACHINE DIRECTIVE

AGENTE/DEALER



ALFA SRL • 61015 NOVAFELTRIA (PU) • ITALY • PH. +39 0541 920096 • FAX 0541 921847  
www.alfagru.it - info@alfagru.it

05032



© ALFA

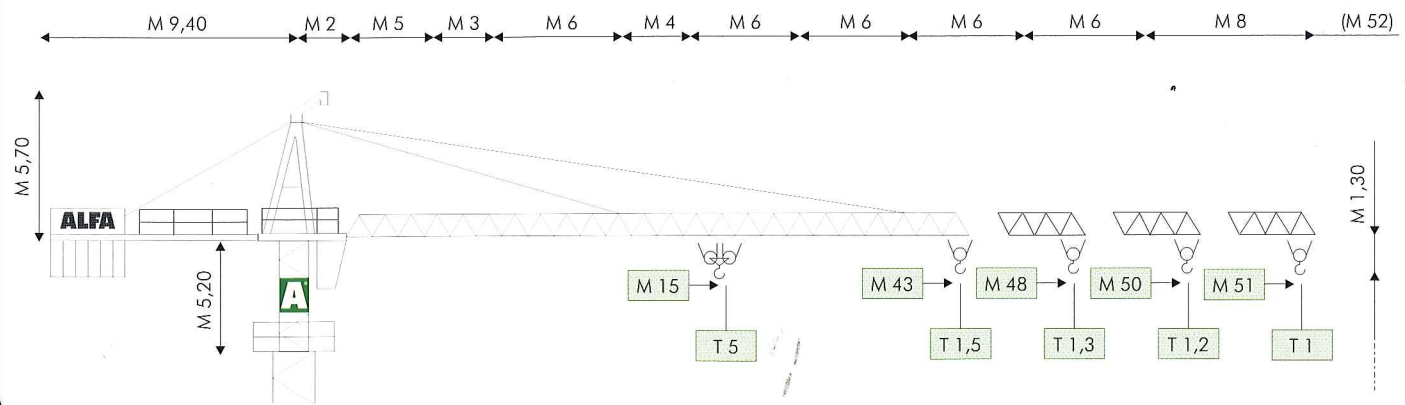
GRUPPO FINALFA



BACCHELLI - MODENA

**HYDROMATIC A694**

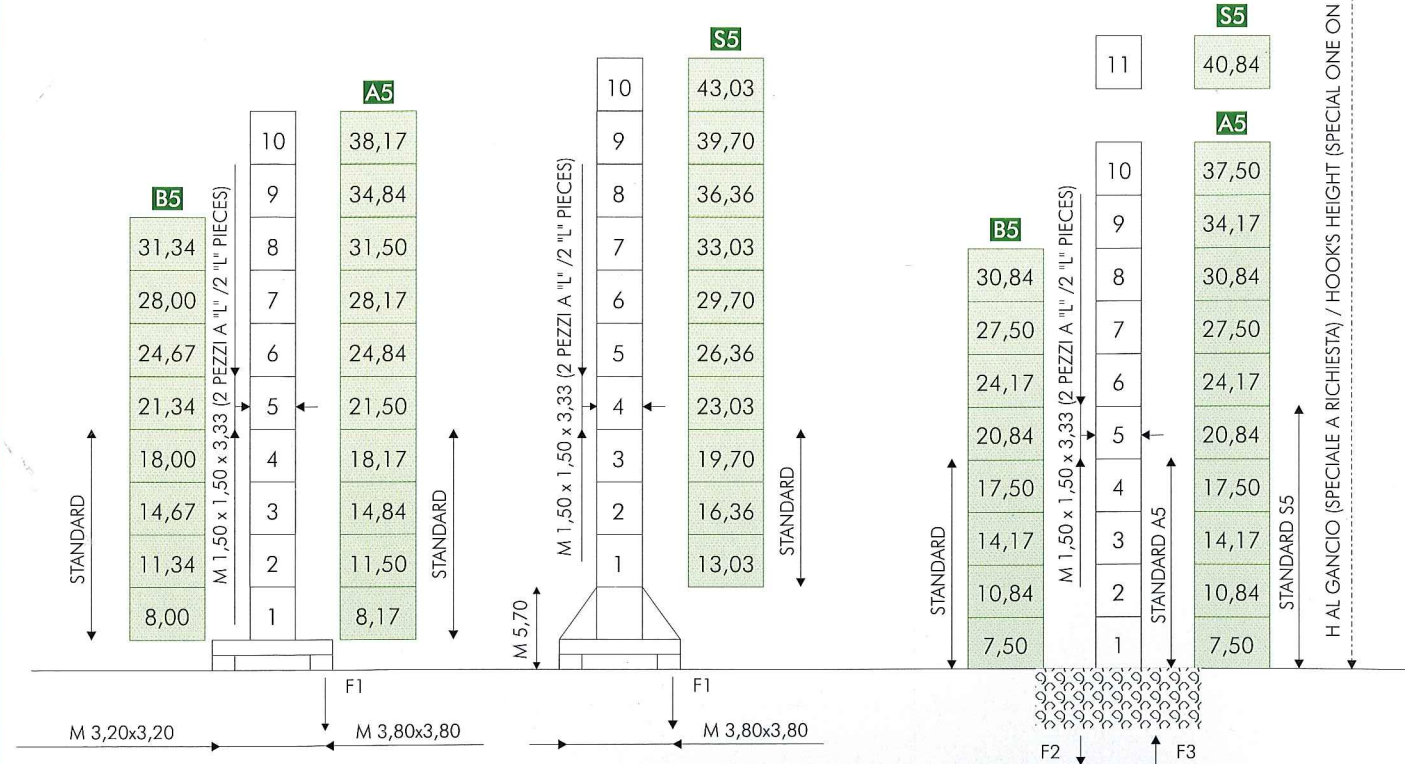
## MODELLO/TYPE A 694 B5 - A5 - S5 - CITY. 5



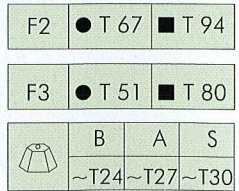
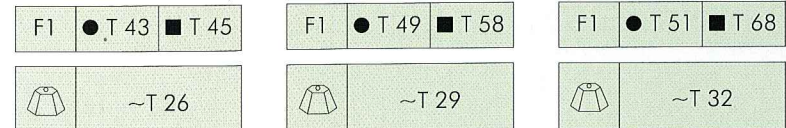
## COMPOSIZIONE TORRE/TOWER SECTIONS

TRASLANTE (FISSA SU CARRO - M 0,60)  
TRAVELLING (FIXED ON CARRIAGE - M 0,60)

FISSA SENZA CARRO  
FIXED WITHOUT CARRIAGE



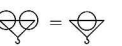
● IN ESERCIZIO / IN SERVICE  
■ FUORI ESERCIZIO / OUT OF SERVICE



## DIAGRAMMI DI CARICO/LOAD DIAGRAMS

### A 694 B5 - A5 - S5 - CITY. 5

T				2,5	2,1	1,7	1,5	1,3	1,2	1	
M	11	15	20	21	25	30	35	40	45	51	M 51
T	5	3,6	2,7	2,5							
T				2,5	2,2	1,75	1,55	1,4	1,2		
M	12,5	15	20	25	30	35	40	45	50		M 50
T	5	3,6	2,8	2,5							
T				2,5	2,2	1,9	1,6	1,3			
M	14,5	20	25	27	30	35	40	48			M 48
T	5	3,6	2,8	2,5							
T				2,5	2,3	2	1,5				
M	15	20	25	28	30	35	43				M 43
T	5	3,7	2,9	2,5							

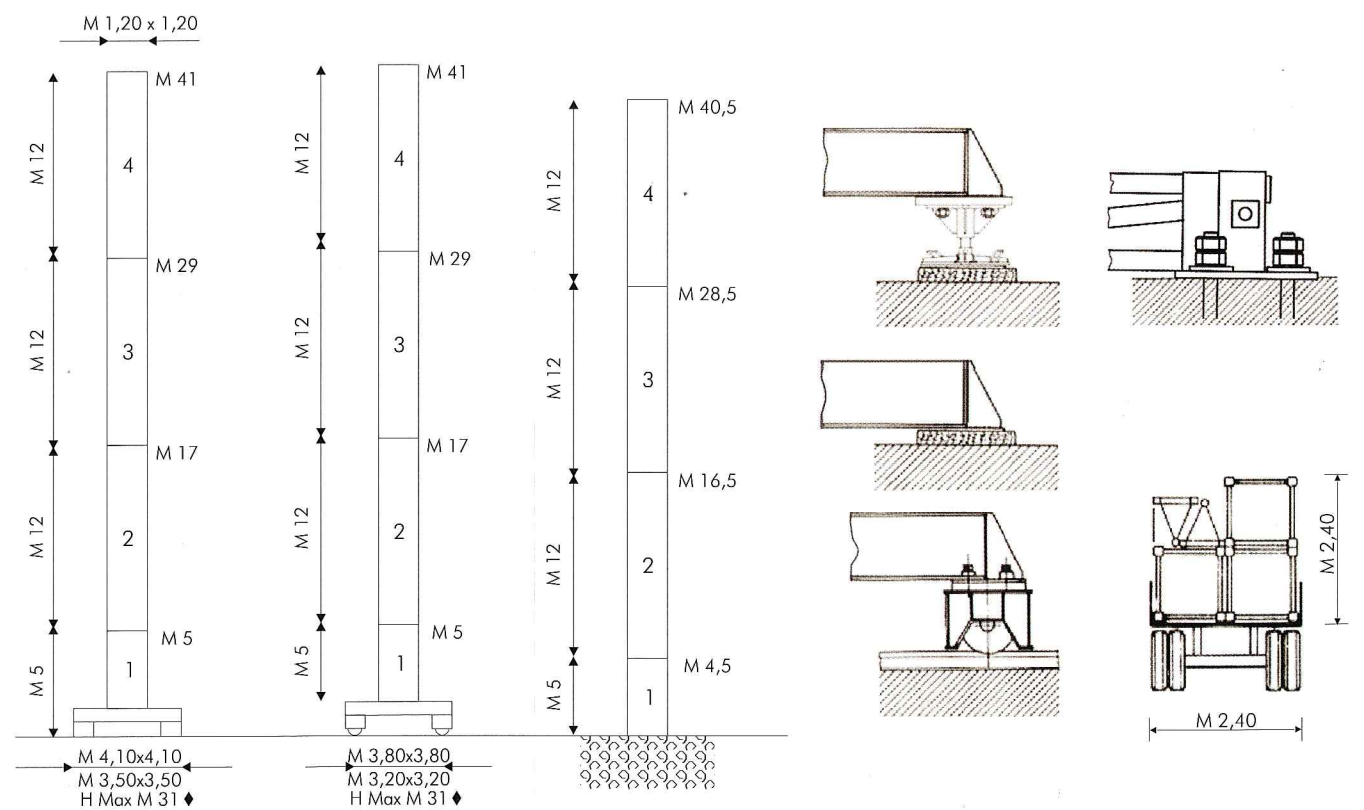


## VERSIONE CITY / CITY CONFIGURATION

FISSA SU CARRO  
FIXED ON CARRIAGE

TRASLANTE  
TRAVELLING

FISSA SENZA CARRO  
FIXED WITHOUT CARRIAGE



A PORTALE / PORTAL

RAMPANTE / CLIMBING

ANCORATA / ANCHORED

