

**MECCANISMI/MECHANISMS A 794 B5 - A5 - S5 - CITY. 5**

Diagram	HP	M/1'	Diagram	HP	M/1'	T
		3,5 (SECAS III)		0 ▶ 60 (MICRO 0 - 5)		20/20/5 (194 - 3VS)
	2 x 3,5 (SECAS III)	0 ▶ 0,8 (MICRO 0 - 0,1) (G/1'-REV/1')			I 2,5 II 12,5 III 25	5 5 3
	2 x 5,5 (SECAS III)	0 ▶ 25 (MICRO 0 - 3)		20 ♦ (MULTILIFT)	0 ▶ 70 3/10/25 50/70	2,5/2,5/2,5 1,5/1
					0 ▶ 35 1,5/5/12,5 25/35	5/5/5 3/2

ALIMENTAZIONE/POWER SUPPLY	V	400/50HZ	RADIOCOMANDO/RADIOCONTROL
ASSORBIMENTO/MAINS SUPPLY	KW	32/20 ♦	SET MONTAGGIO/ERECTION SET ♦
CABINA PENSILE/SLEWING CAB			TIRO IN QUARTA/FOUR FALLS REEVING ♦
CONTRAPPESO/COUNTERWEIGHT	~T	20,4	ZAVORRA BASE/BASE BALLAST ~T 27 ▶ 88 ♦

dati non impegnativi e modifiche riservate / subject to modifications

a richiesta / on request ♦

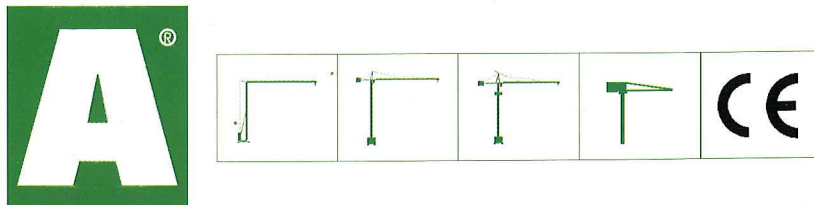
**CARATTERISTICHE PRINCIPALI**

STRUTTURE IN ACCIAIO FE 510C A NORME DIN • ACCOPPIAMENTI SPINATI, SEDI ALESATE • PERNERIA, FUNI, PIATTAFORME E PASSERELLE AEREE ZINCATE • RUOTISMI SU CUSCINETTI E RIDUTTORI EPICICLOIDALI IN PRESA DIRETTA • RALLA PRECARICATA E TRATTATA TERMICAMENTE, CON LUBRIFICAZIONE CENTRALIZZATA (ALFALUB) • ROTAZIONE ELETTRONICA A REGOLAZIONE CONTINUA DI VELOCITÀ (SECAS III) • DISTRIBUZIONE ELETTRONICA A REGOLAZIONE CONTINUA DI VELOCITÀ (SECAS III) • TRASLAZIONE ELETTRONICA A REGOLAZIONE CONTINUA DI VELOCITÀ (SECAS III) • RUOTE DI TRASLAZIONE IN ACCIAIO FUCINATO, TRATTATE TERMICAMENTE • PIATTAFORMA GIREVOLE, CON I PRINCIPALI GRUPPI ELETTROMECCANICI A BORDO • TIRO IN QUARTA • CABINA PENSILE ROTANTE • ARMADIO ELETTRICO IN ACCIAIO INOX A NORME CEI • VERNICIATURA AD IMMERSIONE CON DOPPIA MANO DI SMALTO AL CROMO-ZINCO (DEPAS) • DISPOSITIVI DI SICUREZZA SECONDO LA DIRETTIVA MACCHINE EUROPEA "CE".

**MEAN FEATURES**

ST 510C STEEL STRUCTURES CONFORM TO DIN RULES • PINED CONNECTIONS, BORED SEATS • GALVANIZED PINS, ROPES, PLATFORMS AND FOOTPATHS • DRIVING MECHANISMS ON BEARINGS AND DIRECT DRIVE PLANETARY GEARS • PRELOADED AND HEAT TREATED SLEWING RING WITH CENTRALISED LUBRICATION (ALFALUB) • ELECTRONIC SLEWING WITH CONTINUOUS SPEED ADJUSTMENT (SECAS III) • ELECTRONIC TROLLEY WINCH WITH CONTINUOUS SPEED ADJUSTMENT (SECAS III) • ELECTRONIC TRAVELLING WITH CONTINUOUS SPEED ADJUSTMENT (SECAS III) • FORGED STEEL TRAVELLING WHEELS HEAT TREATED • SLEWING PLATFORM WITH MAIN ELECTRO - MECHANICAL GROUPS ON BOARD • FOUR FALLS REEVING • SLEWING OPERATOR'S CAB • STAINLESS STEEL ELECTRICAL BOARD PANEL CONFORMS TO CEI RULES • DIPPING PAINTING WITH DOUBLE COAT OF CHROMIUM ZINC ENAMEL (DEPAS) • SAFETY DEVICES ACCORDING TO "CE" EUROPEAN MACHINE DIRECTIVE

AGENTE/DEALER



ALFA SRL • 61015 NOVAFELTRIA (PU) • ITALY • PH. +39 0541 920096 • FAX 0541 921847  
www.alfagru.it - info@alfagru.it

05032



© ALFA

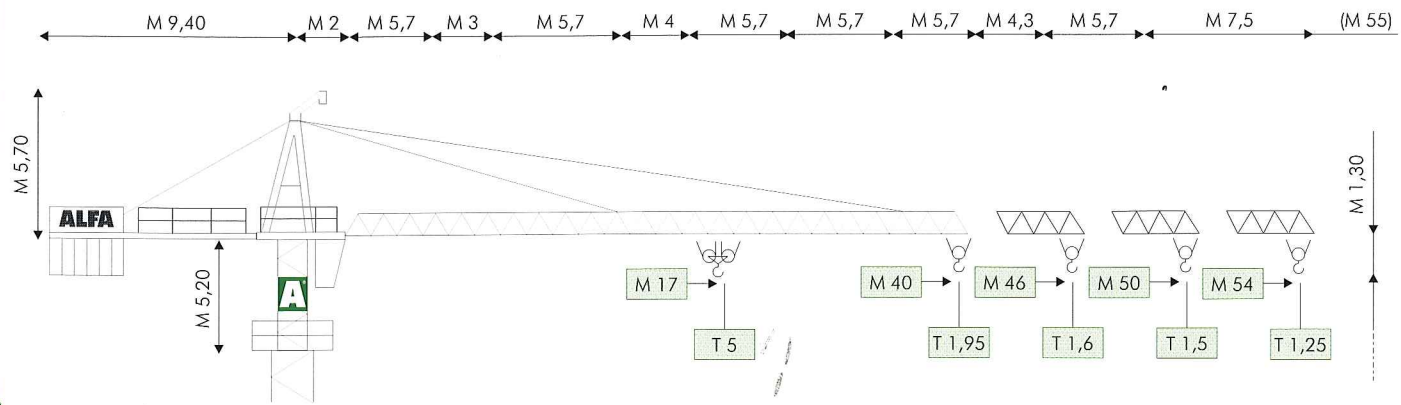
GRUPPO FINALFA



ALBINI - POTENZA

**HYDROMATIC A794**

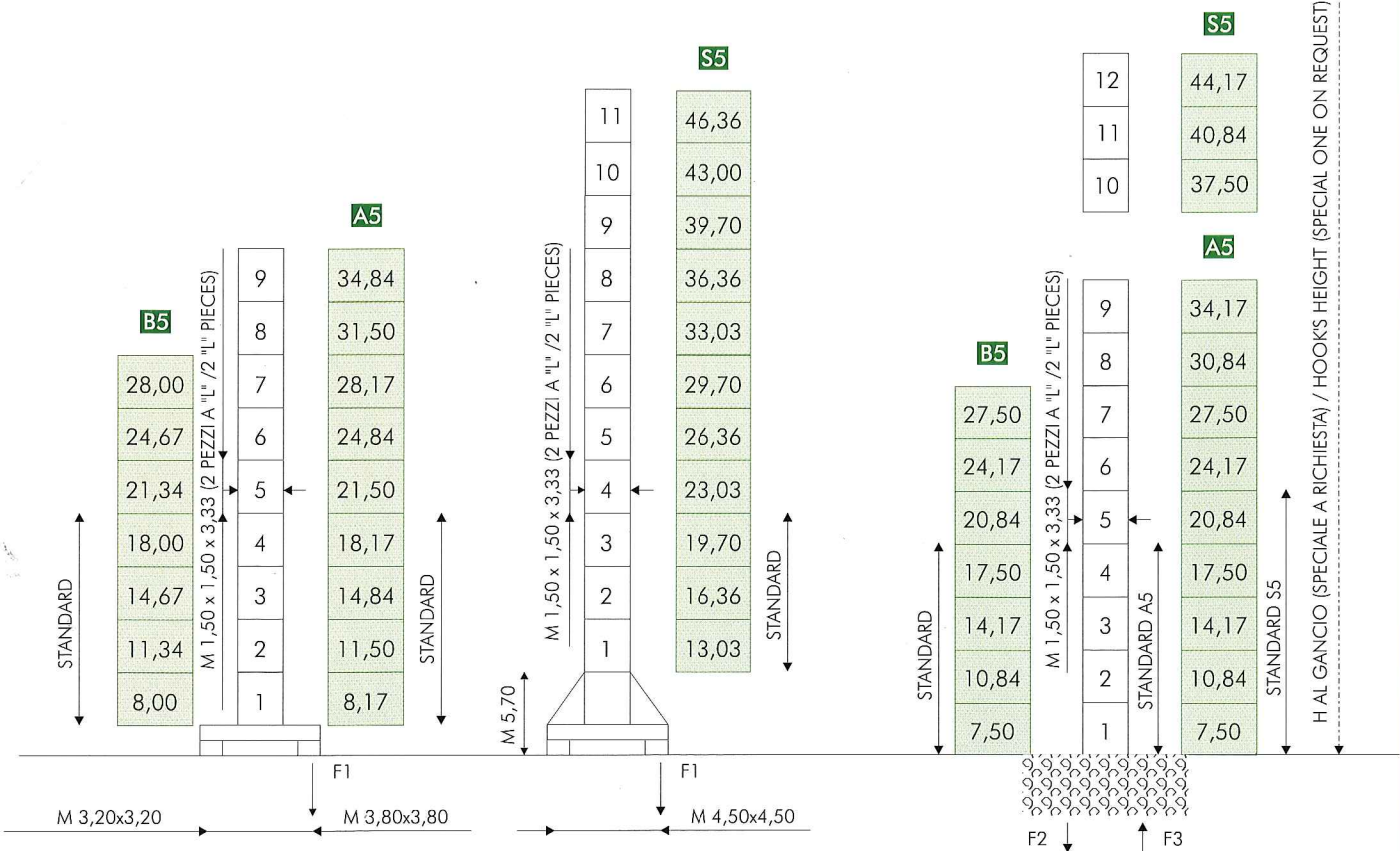
## MODELLO/TYPE A 794 B5 - A5 - S5 - CITY. 5



## COMPOSIZIONE TORRE/TOWER SECTIONS

TRASLANTE (FISSA SU CARRO - M 0,60)  
TRAVELLING (FIXED ON CARRIAGE - M 0,60)

FISSA SENZA CARRO  
FIXED WITHOUT CARRIAGE



● IN ESERCIZIO / IN SERVICE

■ FUORI ESERCIZIO / OUT OF SERVICE

F1 ● T 43 ■ T 45

F1 ● T 50 ■ T 58

F1 ● T 58 ■ T 75

~T 28

~T 32

~T 35

F2 ● T 97 ■ T 118

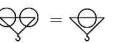
F3 ● T 74 ■ T 98

B A S  
~T26~T30~T33

## DIAGRAMMI DI CARICO/LOAD DIAGRAMS

### A 794 B5 - A5 - S5 - CITY. 5

T					2,5	2,1	1,8	1,55	1,35	1,25	
M	15	20	25	30	35	40	45	50	54		M 54
T	5	3,85	3,05	2,5							
T				2,5	2,2	1,9	1,65	1,5			
M	16	20	25	31	35	40	45	50			M 50
T	5	4,1	3,2	2,5							
T				2,5	2,2	1,9	1,6				
M	16	20	25	31	35	40	46				M 46
T	5	4,1	3,2	2,5							
T				2,5	2,25	1,95					
M	17	20	25	32	35	40					M 40
T	5	4,2	3,25	2,5							



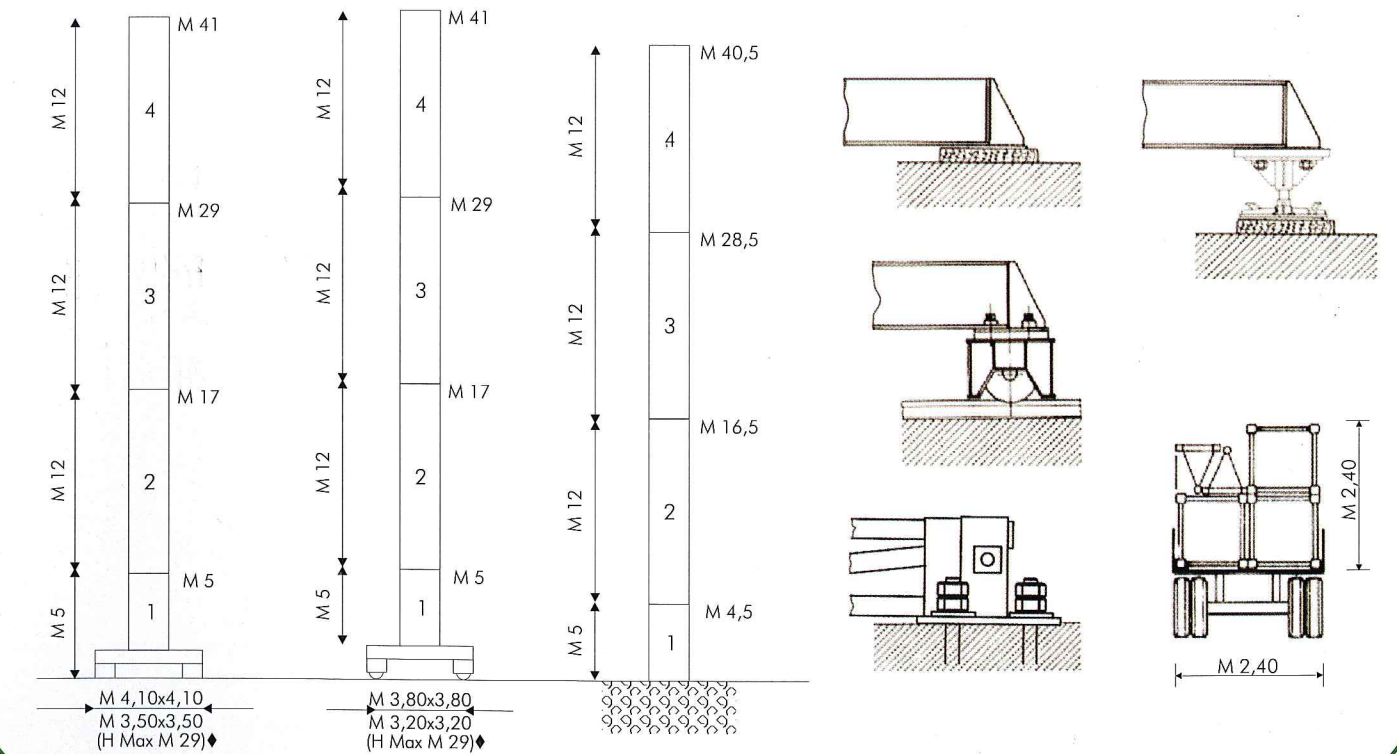
## VERSIONE CITY / CITY CONFIGURATION

FISSA SU CARRO  
FIXED ON CARRIAGE

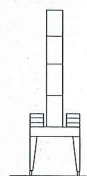
TRASLANTE  
TRAVELLING

FISSA SENZA CARRO  
FIXED WITHOUT CARRIAGE

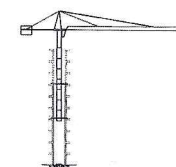
M 1,20 x 1,20 (TORRE PESANTE/HEAVY TOWER)  
M 1,60 x 1,60 (TORRE LEGGERA/LIGHT TOWER)



### A PORTALE / PORTAL



### RAMPANTE / CLIMBING



### ANCORATA / ANCHORED

