

MECCANISMI/MECHANISMS A 806 B5 - A5 - CITY5

Diagram	HP	M/1'	Diagram	HP	M/1'	T
	3,5 (SECAS III)	0 ▶ 60 (MICRO 0 ▶ 5)		20/20/5 (194 3VS)	I	5
2 x 4/4 (SECAS III)	0 ▶ 0,4/0 ▶ 0,8 (MICRO 0 ▶ 0,1) (G/1'-REV/1')	20 ♦ (MULTILIFT)	II	25	2,5	
2 x 6,5 (SECAS III)	0 ▶ 25 (MICRO 0 ▶ 3)		III	50	1,4	
			♦	I	2,5	5
		II	12,5	5		
			III	25	2,8	
			♦	0 - 70 3/10/25 50/70	2,5/2,5/2,5 1,4/1	
			♦	0 - 35 1,5/5/12,5 25/35	5/5/5 2,8/2	

A806 B6 - A6 - CITY6

Diagram	HP	M/1'	Diagram	HP	M/1'	T
	3,5 (SECAS III)	0 ▶ 60 (MICRO 0 ▶ 5)		25/25/6 (208 3VS)	I	5
2 x 4,4 (SECAS III)	0 ▶ 0,4/0 ▶ 0,8 (MICRO 0 ▶ 0,1) (G/1'-REV/1')	25 ♦ (MULTILIFT)	II	30	3	
2 x 6,5 (SECAS III)	0 ▶ 25 (MICRO 0 ▶ 3)		III	60	1,5	
			♦	I	2,5	6
		II	15	6		
			III	30	3	
			♦	0 - 75 3/10/30 60/75	3/3/3 1,5/1,2	
			♦	0 - 37,5 1,5/5/15 30/37,5	6/6/6 3/2,4	

ALIMENTAZIONE/POWER SUPPLY	V	400/50HZ	RADIOCOMANDO/RADIOCONTROL
ASSORBIMENTO/MAINS SUPPLY	KW 32 / 20♦ - 48 / 25♦		SET MONTAGGIO/ERECTION SET ♦
CABINA ROTANTE/SLEWING CAB			TIRO IN QUARTA/FOUR FALLS REEVING ♦
CONTRAPPESO/COUNTERWEIGHT	~T	21,5	ZAVORRA BASE/BASE BALLAST ~T 43▶87♦

dati non impegnativi e modifiche riservate / subject to modifications

a richiesta / on request ♦

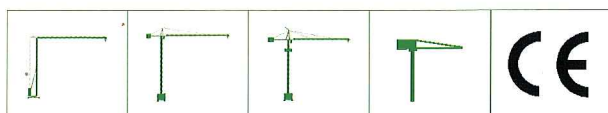
CARATTERISTICHE PRINCIPALI

STRUTTURE IN ACCIAIO FE 510C A NORME DIN • ACCOPPIAMENTI SPINATI, SEDI ALESATE • PERNERIA, FUNI, PIATTAFORME E PASSERELLE AEREE ZINCATE • RUOTISMI SU CUSCINETTI E RIDUTTORI EPICICLOIDALI IN PRESA DIRETTA • RALLA PRECARICATA E TRATTATA TERMICAMENTE, CON LUBRIFICAZIONE CENTRALIZZATA (ALFALUB) • ROTAZIONE ELETTRONICA A REGOLAZIONE CONTINUA DI VELOCITÀ (SECAS III) • DISTRIBUZIONE ELETTRONICA A REGOLAZIONE CONTINUA DI VELOCITÀ (SECAS III) • TRASLAZIONE ELETTRONICA REGOLAZIONE CONTINUA DI VELOCITÀ (SECAS III) • RUOTE DI TRASLAZIONE IN ACCIAIO FUCINATO, TRATTATE TERMICAMENTE • PIATTAFORMA GIREVOLE CON I PRINCIPALI GRUPPI ELETTROMECCANICI A BORDO • TIRO IN QUARTA • CABINA PENSILE ROTANTE • ARMADIO ELETTRICO IN ACCIAIO INOX A NORME CEI • VERNICIATURA AD IMMERSIONE CON DOPPIA MANO DI SMALTO AL CROMO - ZINCO (DEPAS) • DISPOSITIVI DI SICUREZZA SECONDO LA DIRETTIVA MACCHINE EUROPEA "CE".

MEAN FEATURES

ST 510C STEEL STRUCTURES CONFORM TO DIN RULES • PINED CONNECTIONS, BORED SEATS • GALVANIZED PINS, ROPES, PLATFORMS AND FOOTPATHS • DRIVING MECHANISMS ON BEARINGS AND DIRECT DRIVE PLANETARY GEARS • PRELOADED AND HEAT TREATED SLEWING RING WITH CENTRALIZED LUBRICATION (ALFALUB) • ELECTRONIC SLEWING WITH CONTINUOUS SPEED ADJUSTMENT (SECAS III) • ELECTRONIC TROLLEY WINCH WITH CONTINUOUS SPEED ADJUSTMENT (SECAS III) • ELECTRONIC TRAVELLING WITH CONTINUOUS SPEED ADJUSTMENT (SECAS III) • FORGED STEEL TRAVELLING WHEELS HEAT TREATED • SLEWING PLATFORM WITH MAIN ELECTRO - MECHANICAL GROUPS ON BOARD • FOUR FALLS REEVING • SLEWING OPERATOR'S CAB • STAINLESS STEEL ELECTRICAL BOARD PANEL CONFORMS TO CEI RULES • DIPPING PAINTING WITH DOUBLE COAT OF CHROMIUM ZINC ENAMEL (DEPAS) • SAFETY DEVICES ACCORDING TO "CE".

AGENTE/DEALER



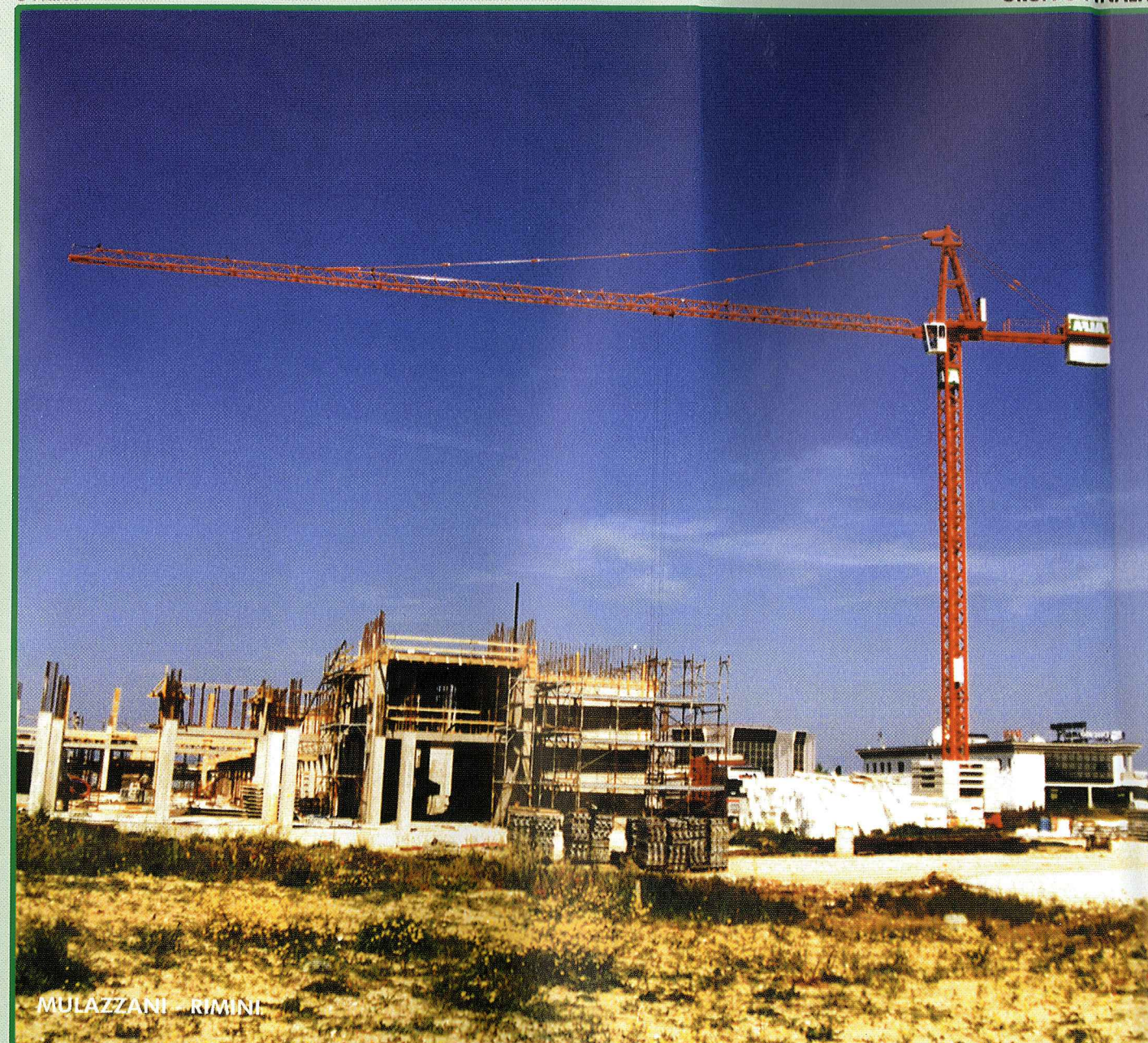
ALFA SRL • 61015 NOVA FELTRIA (PU) • ITALY • PH. +39 0541 920096 • FAX 0541 921847
www.alfagru.it - info@alfagru.it

05032



© ALFA

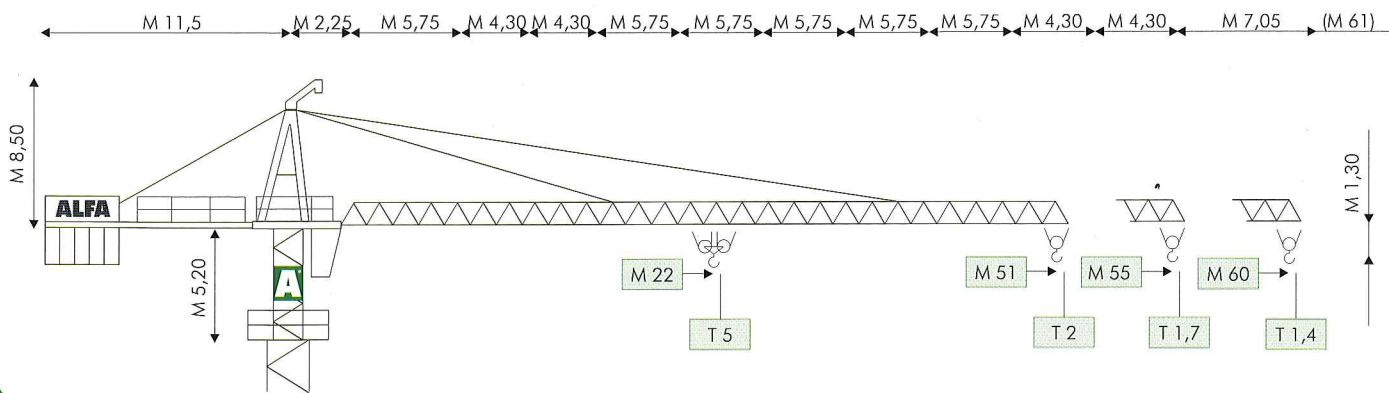
GRUPPO FINALFA



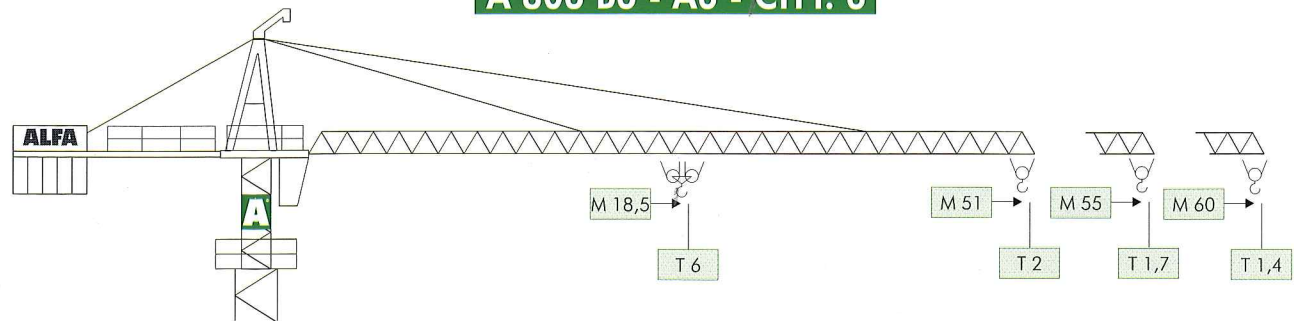
MULAZZANI - RIMINI

HYDROMATIC A806

MODELLO/TYPE A 806 B5 - A5 - CITY. 5



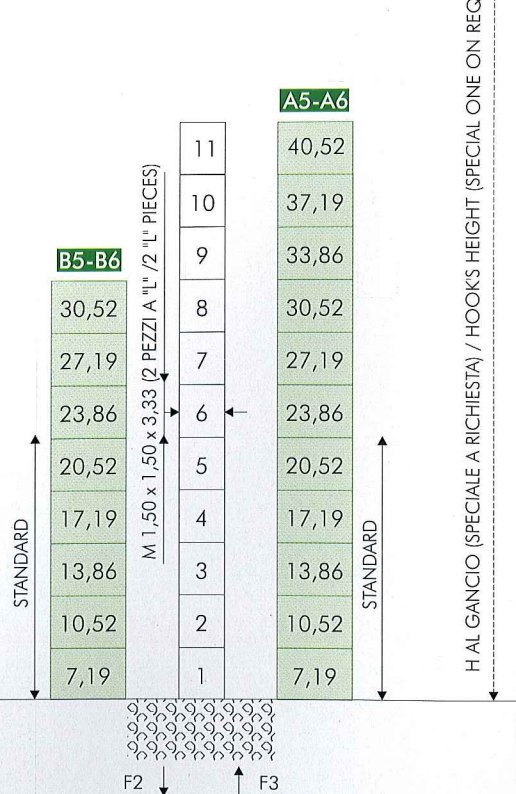
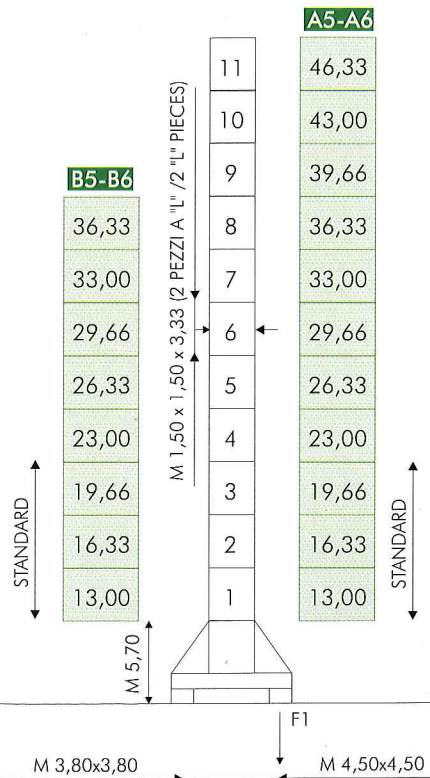
A 806 B6 - A6 - CITY. 6



COMPOSIZIONE TORRE/TOWER SECTIONS

TRANSLANTE (FISSA SU CARRO - M 0,60)
TRAVELLING (FIXED ON CARRIAGE - M 0,60)

FISSA SENZA CARRO
FIXED WITHOUT CARRIAGE



H AL GANCIO (SPECIALE A RICHIESTA) / HOOK'S HEIGHT (SPECIAL ONE ON REQUEST)

● IN ESERCIZIO / IN SERVICE	■ FUORI ESERCIZIO / OUT OF SERVICE
F1 ● T 65 ■ T 68	F1 ● T 75 ■ T 87
~T 42	~T 46

F2 ● T 69 ■ T 73	F2 ● T 81 ■ T 123
F3 ● T 41 ■ T 48	F3 ● T 52 ■ T 97
~T 39	~T 43

DIAGRAMMI DI CARICO/LOAD DIAGRAMS

A 806 B5 - A5 - CITY. 5

T					2,5	2,3	2	1,8	1,4	
M	19	25	30	36	37	40	45	50	60	M 60
T	5	3,8	3,1	2,5						
T					2,5	2,1	1,9	1,7		
M	21	25	30	38	39	45	50	55		M 55
T	5	4,3	3,5	2,5						
T					2,5	2,4	2,3	2		
M	22	25	40	41	42	45	51			M 51
T	5	4,4	2,5							

⊕ = ⊖

A 806 B6 - A6 - CITY. 6

T					3	2,3	2	1,8	1,4	
M	16	20	25	30	31	40	45	50	60	M 60
T	6	4,8	3,8	3						
T					3	2,1	1,9	1,7		
M	17,5	20	25	32	33	45	50	55		M 55
T	6	5,4	4,1	3						
T					3	2,4	2,3	2		
M	18,5	25	34	35	42	45	51			M 51
T	6	4,3	3							

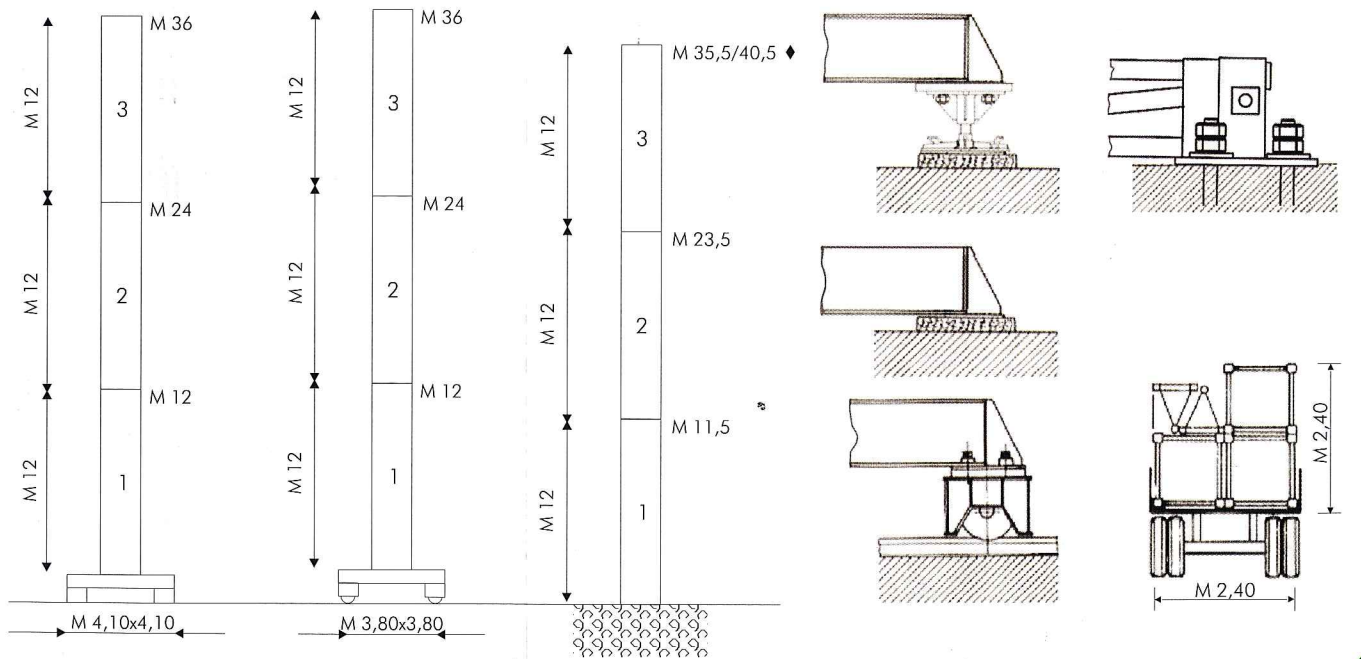
VERSIONE CITY / CITY CONFIGURATION

FISSA SU CARRO
FIXED ON CARRIAGE

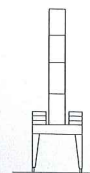
TRASLANTE
TRAVELLING

FISSA SENZA CARRO
FIXED WITHOUT CARRIAGE

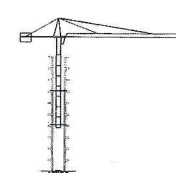
M 1,20 x 1,20 (TORRE PESANTE/HEAVY TOWER)
M 1,60 x 1,60 (TORRE LEGGERA/LIGHT TOWER) ↓



A PORTALE / PORTAL



RAMPANTE / CLIMBING



ANCORATA / ANCHORED

