

MECCANISMI/MECHANISMS A 903 B6 - A6 - CITY 6

Diagram	HP	M/1'	Diagram	HP	M/1'		T
					I	II	
	6,5 (SECAS III)	0 ▶ 60 (MICRO 0 ▶ 60)		25/25/6 (208-3VS)	I	5	3
	3 x 5,5 (SECAS III)	0 ▶ 0,8 (MICRO 0 ▶ 0,1) (G/1'-REV/1')			II	30	3
	2 x 6,5 (SECAS III)	0 ▶ 25 (MICRO 0 ▶ 3)			III	60	1,5
					I	2,5	6
					II	15	6
					III	30	3
				25 ♦ (MULTILIFT)		0 ▶ 80 3/10/30 60/80	3/3/3 2/1,5
							0 ▶ 40 1.5/5/15 30/40

A 903 B8 - A8 - CITY 8

Diagram	HP	M/1'	Diagram	HP	M/1'		T
					I	II	
	6,5 (SECAS III)	0 ▶ 60 (MICRO 0 ▶ 5)		40/40/10 (209-3VS)	I	5	4
	3 x 5,5 (SECAS III)	0 ▶ 0,8 (MICRO 0 ▶ 0,1) (G/1'-REV/1')			II	30	4
	2 x 6,5 (SECAS III)	0 ▶ 25 (MICRO 0 ▶ 3)			III	60	2
					I	2,5	8
					II	15	8
					III	30	4
				40 ♦ (MULTILIFT)		0 ▶ 80 3/10/30 60/80	4/4/4 2,5/1,8
							0 ▶ 40 1,5/5/15 30/40

ALIMENTAZIONE/POWER SUPPLY	V	400/50HZ	RADIOCOMANDO/RADIOCONTROL	
ASSORBIMENTO/MAINS SUPPLY	KW	40/ 25♦ - 60 / 40♦	SET MONTAGGIO/ERECTION SET	♦
CABINA ROTANTE/SLEWING CAB		♦	TIRO IN QUARTA/FOUR FALLS REEVING	♦
CONTRAPPESO/COUNTERWEIGHT	~T	27	ZAVORRA BASE/BASE BALLAST	~T 48 ▶ 102 ♦

dati non impegnativi e modifiche riservate / subject to modifications

a richiesta / on request ♦

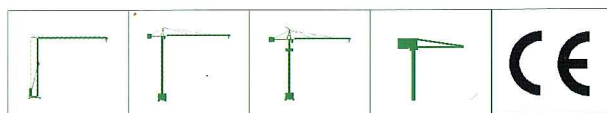
CARATTERISTICHE PRINCIPALI

STRUTTURE IN ACCIAIO FE 510C A NORME DIN • ACCOPIAMENTI SPINATI, SEDI ALESATE • PERNERIA, FUNI, PIATTAFORME E PASSERELLE AEREE ZINCATE • RUOTISMI SU CUSCINETTI E RIDUTTORI EPICICLOIDALI IN PRESA DIRETTA • RALLA PRECARICATA E TRATTATA TERMICAMENTE, CON LUBRIFICAZIONE CENTRALIZZATA (ALFALUB) • ROTAZIONE ELETTRONICA A REGOLAZIONE CONTINUA DI VELOCITÀ (SECAS III) • DISTRIBUZIONE ELETTRONICA A REGOLAZIONE CONTINUA DI VELOCITÀ (SECAS III) • TRASLAZIONE ELETTRONICA A REGOLAZIONE CONTINUA DI VELOCITÀ (SECAS III) • RUOTE DI TRASLAZIONE IN ACCIAIO FUCINATO, TRATTATE TERMICAMENTE • PIATTAFORMA GIREVOLE CON I PRINCIPALI GRUPPI ELETTROMECCANICI A BORDO • TIRO IN QUARTA • CABINA PENSILE ROTANTE • ARMADIO ELETTRICO IN ACCIAIO INOX A NORME CEI • VERNICIATURA AD IMMERSIONE CON DOPPIA MANO DI SMALTO AL CROMO - ZINCO (DEPAS) • DISPOSITIVI DI SICUREZZA SECONDO LA DIRETTIVA MACCHINE EUROPEA "CE".

MEAN FEATURES

ST 510C STEEL STRUCTURES CONFORM TO DIN RULES • PINED CONNECTIONS, BORED SEATS • GALVANIZED PINS, ROPES, PLATFORMS AND FOOTPATHES • DRIVING MECHANISMS ON BEARINGS AND DIRECT DRIVE PLANETARY GEARS • PRELOADED AND HEAT TREATED SLEWING RING WITH CENTRALIZED LUBRICATION (ALFALUB) • ELECTRONIC SLEWING WITH CONTINUOUS SPEED ADJUSTMENT (SECAS III) • ELECTRONIC TROLLEY WINCH WITH CONTINUOUS SPEED ADJUSTMENT (SECAS III) • ELECTRONIC TRAVELLING WITH CONTINUOUS SPEED ADJUSTMENT (SECAS III) • FORGED STEEL TRAVELLING WHEELS HEAT TREATED • SLEWING PLATFORM WITH MAIN ELECTRO - MECHANICAL GROUPS ON BOARD • FOUR FALLS REEVING • SLEWING OPERATOR'S CAB • STAINLESS STEEL ELECTRICAL BOARD PANEL CONFORMS TO CEI RULES • DIPPING PAINTING WITH DOUBLE COAT OF CHROMIUM ZINC ENAMEL (DEPAS) • SAFETY DEVICES ACCORDING TO "CE"

AGENTE/DEALER



ALFA SRL • 61015 NOVAFELTRIA (PU) • ITALY • PH. +39 0541 920096 • FAX 0541 921847
www.alfagru.it - info@alfagru.it

05042

ALFA

© ALFA

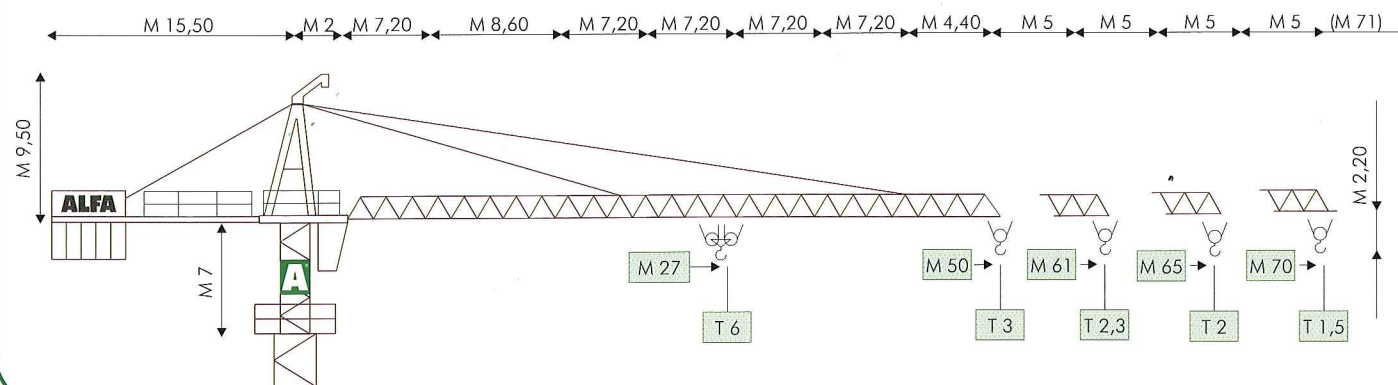
GRUPPO FINALFA



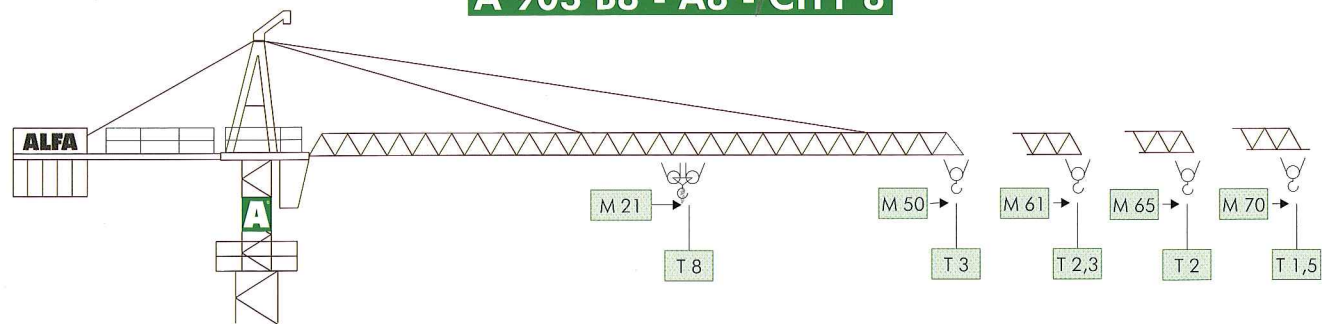
ROMAGNOLI - FIRENZE

HYDROMATIC A903

MODELLO/TYPE A 903 B6 - A6 - CITY 6



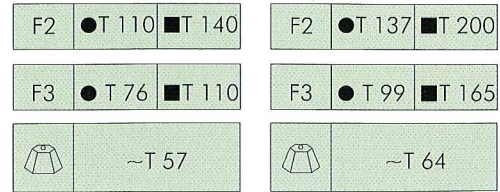
A 903 B8 - A8 - CITY 8



COMPOSIZIONE TORRE/TOWER SECTIONS

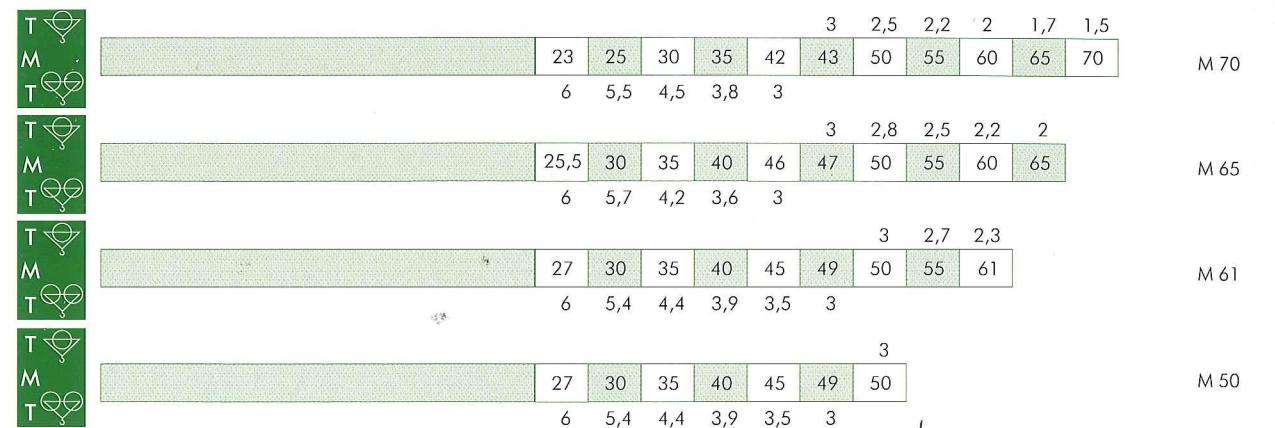
TRANSLANTE (FISSA SU CARRO - M 0,60)
TRAVELLING (FIXED ON CARRIAGE - M 0,60)

FISSA SENZA CARRO
FIXED WITHOUT CARRIAGE



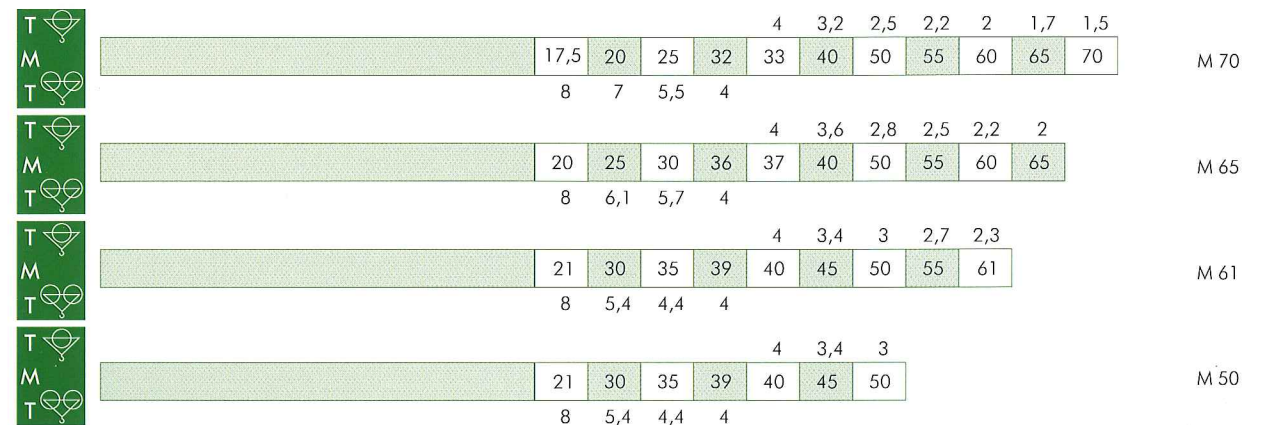
DIAGRAMMI DI CARICO / LOAD DIAGRAMS

A 903 B6 - A6 CITY 6



⊙ = ⊙ - KG 100

A 903 B8 - A8 CITY 8



VERSIONE CITY / CITY CONFIGURATION

