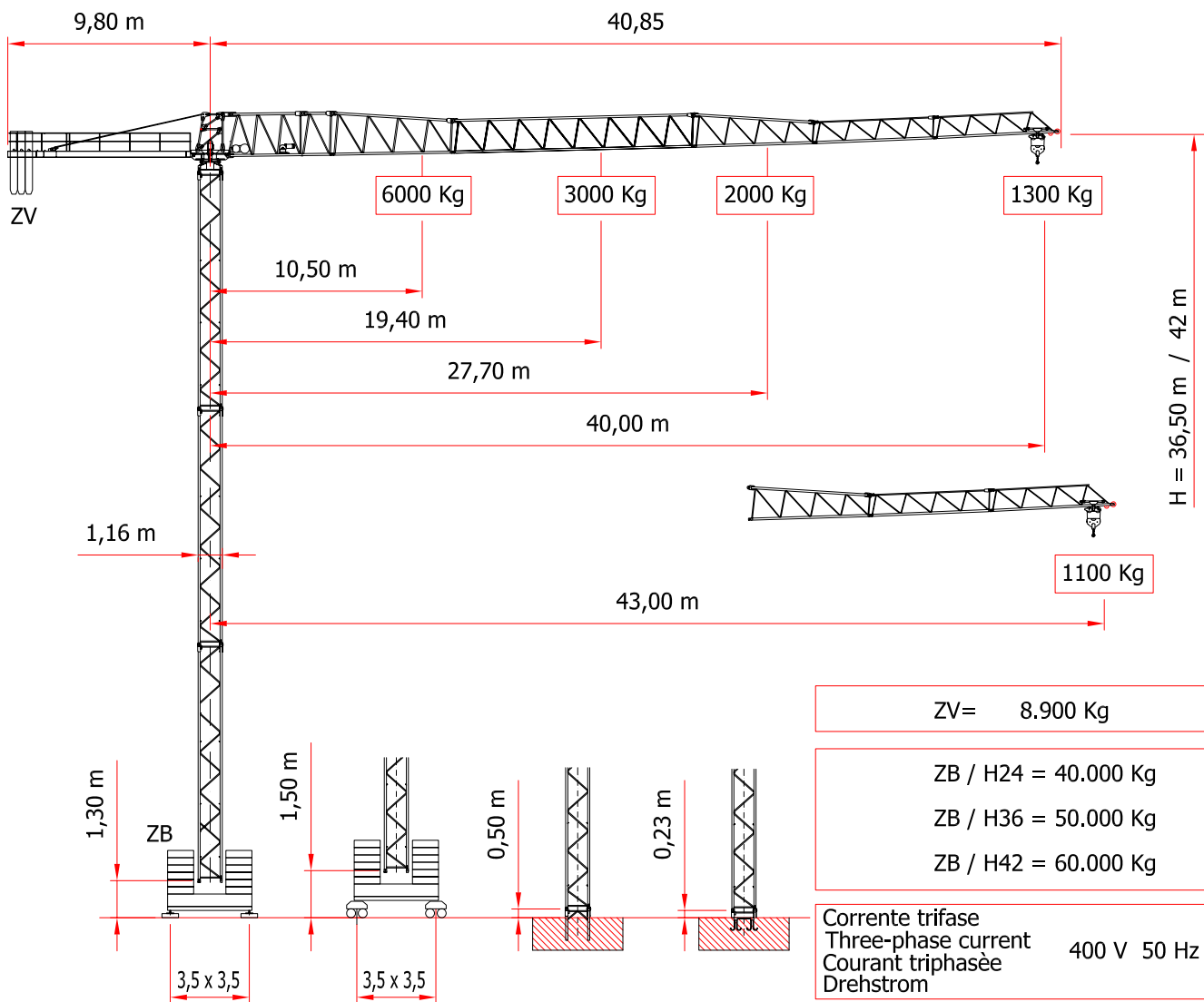


SERIE CBF 40

CITY 40/1300



ZV= 8.900 Kg

ZB / H24 = 40.000 Kg

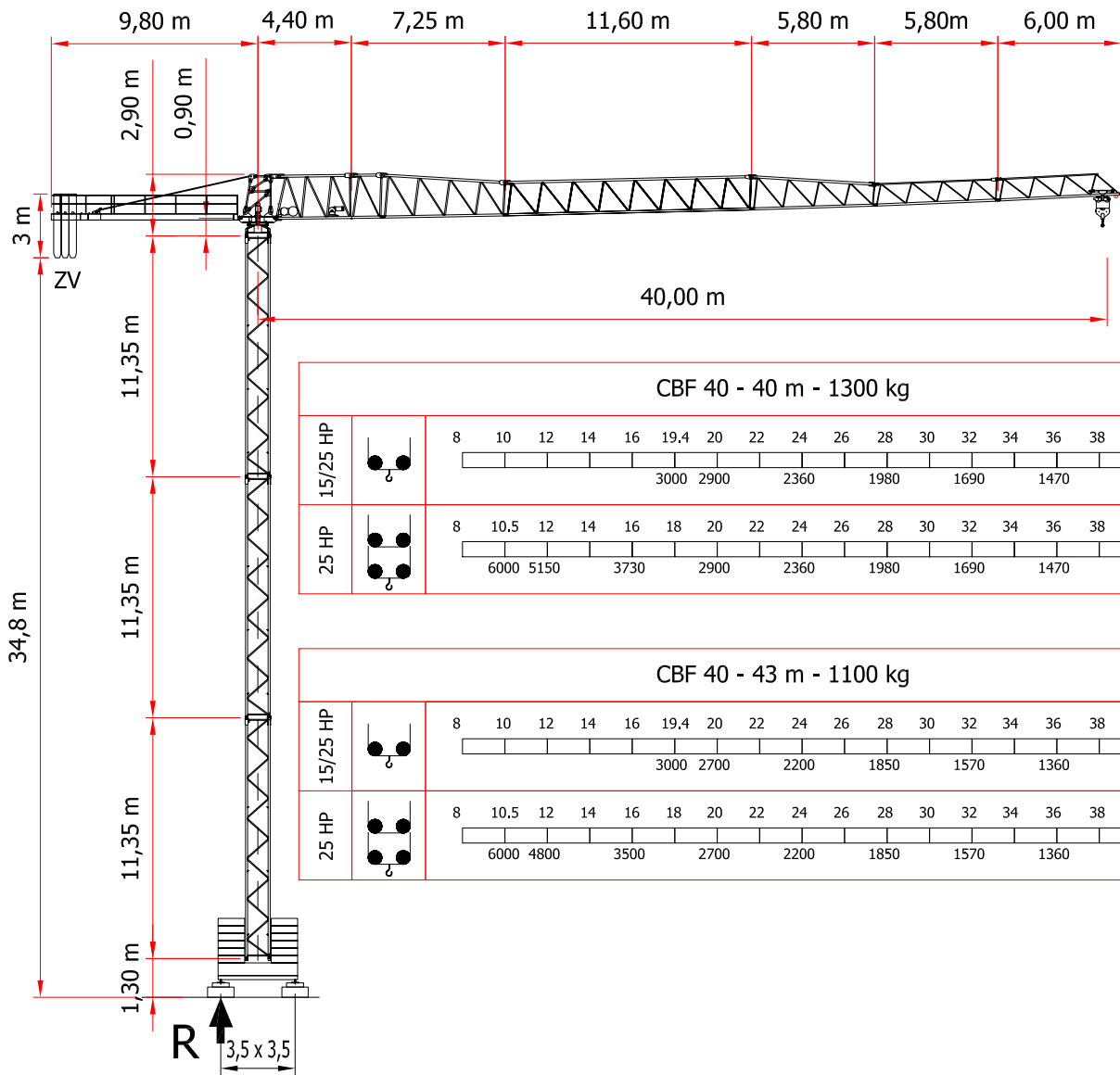
ZB / H36 = 50.000 Kg

ZB / H42 = 60.000 Kg

Corrente trifase
 Three-phase current
 Courant triphasée
 Drehstrom 400 V 50 Hz

Potenza installata
 Power set up
 Puissance installée
 Kraftbedarf KW 20 (Argano 15 HP)
 KW 28 (Argano 25 HP)

	HP 15				HP 25						
	↓↑		Kg	m/1'	↓↑		Kg	m/1'			
			1500	40			1500	60		30/60 m/1' 2,2/2,2 kW INVERTER	
			3000	20			3000	30			0-1,1 rpm 60 Nm INVERTER
			3000	5			3000	7			
			-	-			3000	30			15 m/1' 2x3 kW INVERTER
			-	-			6000	15			
			-	-			6000	3,5			



CBF 40 - 40 m - 1300 kg																																			
15/25 HP	<table border="1"> <tr> <td>8</td><td>10</td><td>12</td><td>14</td><td>16</td><td>19,4</td><td>20</td><td>22</td><td>24</td><td>26</td><td>28</td><td>30</td><td>32</td><td>34</td><td>36</td><td>38</td><td>40</td> </tr> <tr> <td colspan="17">3000 2900 2360 1980 1690 1470 1300</td> </tr> </table>	8	10	12	14	16	19,4	20	22	24	26	28	30	32	34	36	38	40	3000 2900 2360 1980 1690 1470 1300																
8	10	12	14	16	19,4	20	22	24	26	28	30	32	34	36	38	40																			
3000 2900 2360 1980 1690 1470 1300																																			
25 HP	<table border="1"> <tr> <td>8</td><td>10,5</td><td>12</td><td>14</td><td>16</td><td>18</td><td>20</td><td>22</td><td>24</td><td>26</td><td>28</td><td>30</td><td>32</td><td>34</td><td>36</td><td>38</td><td>40</td> </tr> <tr> <td colspan="17">6000 5150 3730 2900 2360 1980 1690 1470 1300</td> </tr> </table>	8	10,5	12	14	16	18	20	22	24	26	28	30	32	34	36	38	40	6000 5150 3730 2900 2360 1980 1690 1470 1300																
8	10,5	12	14	16	18	20	22	24	26	28	30	32	34	36	38	40																			
6000 5150 3730 2900 2360 1980 1690 1470 1300																																			

CBF 40 - 43 m - 1100 kg																																					
15/25 HP	<table border="1"> <tr> <td>8</td><td>10</td><td>12</td><td>14</td><td>16</td><td>19,4</td><td>20</td><td>22</td><td>24</td><td>26</td><td>28</td><td>30</td><td>32</td><td>34</td><td>36</td><td>38</td><td>40</td><td>43</td> </tr> <tr> <td colspan="18">3000 2700 2200 1850 1570 1360 1200 1100</td> </tr> </table>	8	10	12	14	16	19,4	20	22	24	26	28	30	32	34	36	38	40	43	3000 2700 2200 1850 1570 1360 1200 1100																	
8	10	12	14	16	19,4	20	22	24	26	28	30	32	34	36	38	40	43																				
3000 2700 2200 1850 1570 1360 1200 1100																																					
25 HP	<table border="1"> <tr> <td>8</td><td>10,5</td><td>12</td><td>14</td><td>16</td><td>18</td><td>20</td><td>22</td><td>24</td><td>26</td><td>28</td><td>30</td><td>32</td><td>34</td><td>36</td><td>38</td><td>40</td><td>43</td> </tr> <tr> <td colspan="18">6000 4800 3500 2700 2200 1850 1570 1360 1200 1100</td> </tr> </table>	8	10,5	12	14	16	18	20	22	24	26	28	30	32	34	36	38	40	43	6000 4800 3500 2700 2200 1850 1570 1360 1200 1100																	
8	10,5	12	14	16	18	20	22	24	26	28	30	32	34	36	38	40	43																				
6000 4800 3500 2700 2200 1850 1570 1360 1200 1100																																					

CBF 40

REAZIONE
R = 50.000 Kg
 REACTION

DIN 15018 H₁ B₂ B₃ DIN 15019

CON RISERVA DI MODIFICHE
 SUBJECT TO MODIFICATION
 RESERVA DE MODIFICACIONES
 MODIFICATIONS RESERVEES
 ANDERUNGEN VORBEHALTEN

