

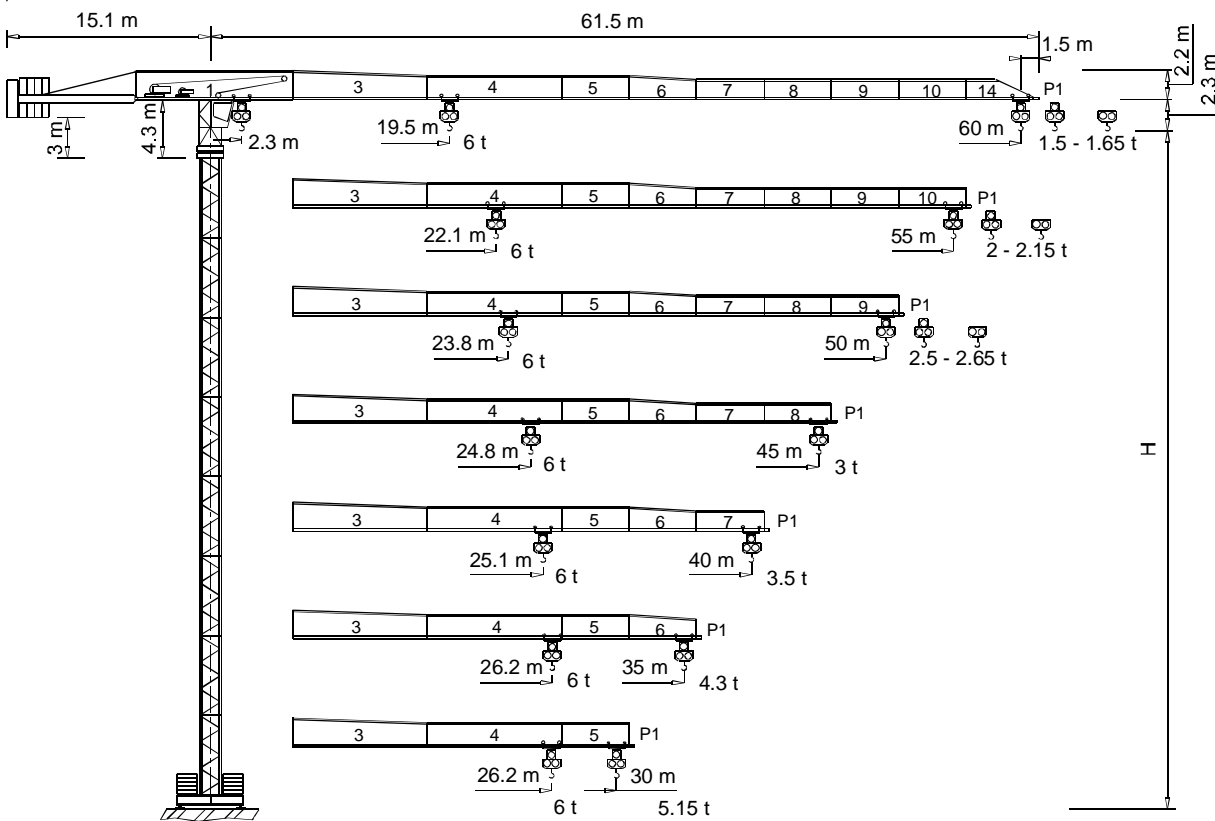


**TEREX | COMEDIL**

**Gru a torre "Flat Top"**

**"Flat Top" Tower Crane • Grue à tour "Flat Top"**

**"Flat Top" Turmdrehkran • Grúa torre "Flat Top"**



**FEM 1.001 A3**

**THE ULTIMATE CRANE™**

Dati illustrativi non impegnativi  
Con riserva di modifica senza preavviso

Specifications and data not binding  
Subject to modification without notice

Données techniques seulement indicatives  
Modifications réservées sans préavis

Angaben und Beschreibung unverbindlich  
Änderungen vorbehalten ohne weitere Mitteilung

Dibujos y datos sin compromiso  
Modificaciones reservadas sin preaviso

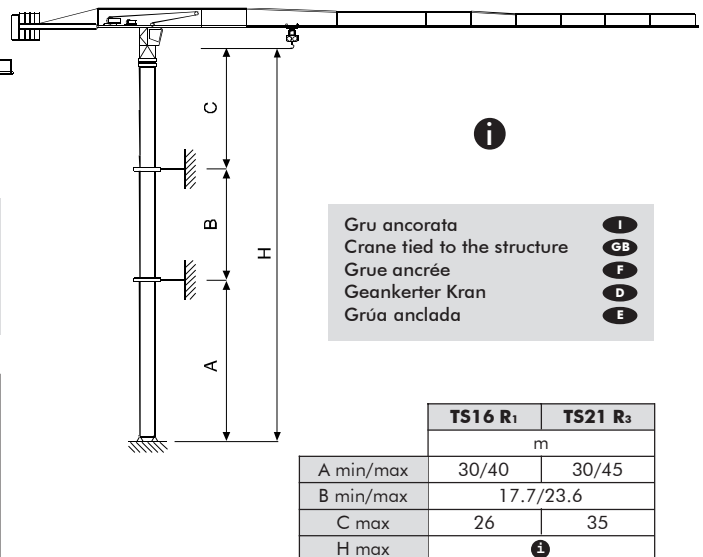
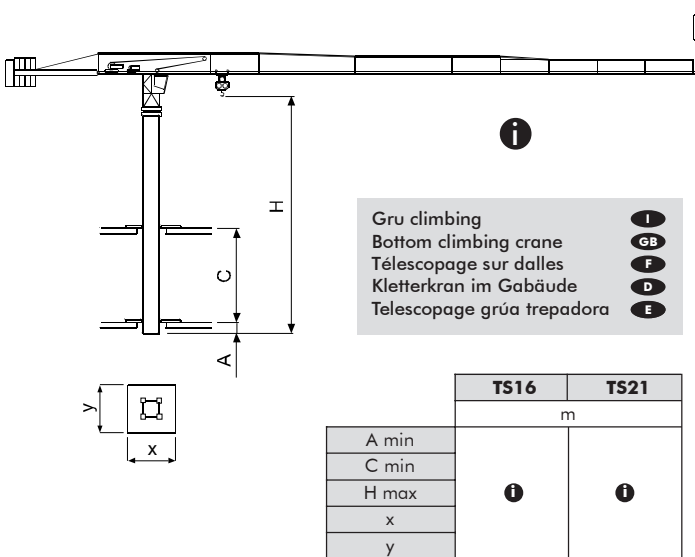
**UTE.DOC. REV.005**

**"CITY" CTT 141-6 TS**

Diagramma di portata **I**  
Load Diagram **GB**
Courbes de charges **F**  
Lastkurven **D**
Curvas de cargas **E**

<b>i</b>		<b>CTT 141-6</b>												
		m	10	15	20	25	30	35	40	45	50	55	60	
3 t	- 36.8 m	t	3	3	3	3	3	3	2.72	2.36	2.08	1.84	1.65	
3 t	- 35.2 m	t	3	3	3	3	3	3	2.56	2.21	1.92	1.69	1.5	
6 t	- 19.51 m	t	6	6	5.83	4.51	3.64	3.02	2.56	2.21	1.92	1.69	1.5	
3 t	- 41.63 m	t	3	3	3	3	3	3	2.74	2.41	2.15			
3 t	- 39.86 m	t	3	3	3	3	3	3	2.99	2.58	2.26	2		
6 t	- 22.05 m	t	6	6	6	5.2	4.21	3.51	2.99	2.58	2.26	2		
3 t	- 45 m	t	3	3	3	3	3	3	3	3	2.65			
3 t	- 43.13 m	t	3	3	3	3	3	3	3	2.85	2.5			
6 t	- 23.83 m	t	6	6	6	5.68	4.61	3.85	3.29	2.85	2.5			
3 t	- 45 m	t	3	3	3	3	3	3	3	3				
6 t	- 24.85 m	t	6	6	6	5.96	4.84	4.05	3.46	3				
3 t	- 40 m	t	3	3	3	3	3	3	3					
6 t	- 25.11 m	t	6	6	6	6	4.9	4.1	3.5					
3 t	- 35 m	t	3	3	3	3	3	3						
6 t	- 26.16 m	t	6	6	6	6	5.14	4.3						
3 t	- 30 m	t	3	3	3	3	3							
6 t	- 26.23 m	t	6	6	6	6	5.15							

Altre installazioni **I**  
Other configurations **GB**
Autres implantations **F**  
Aufstellmöglichkeiten **D**
Otras implantaciones **E**



Torre **I**

Tower **GB**

Tour **F**

Turm **D**

Torre **E**

**I** Le prolunghe TS sono disponibili in lunghezza 11.8 m (solo TS16), 5.9 m, 2.95 m.

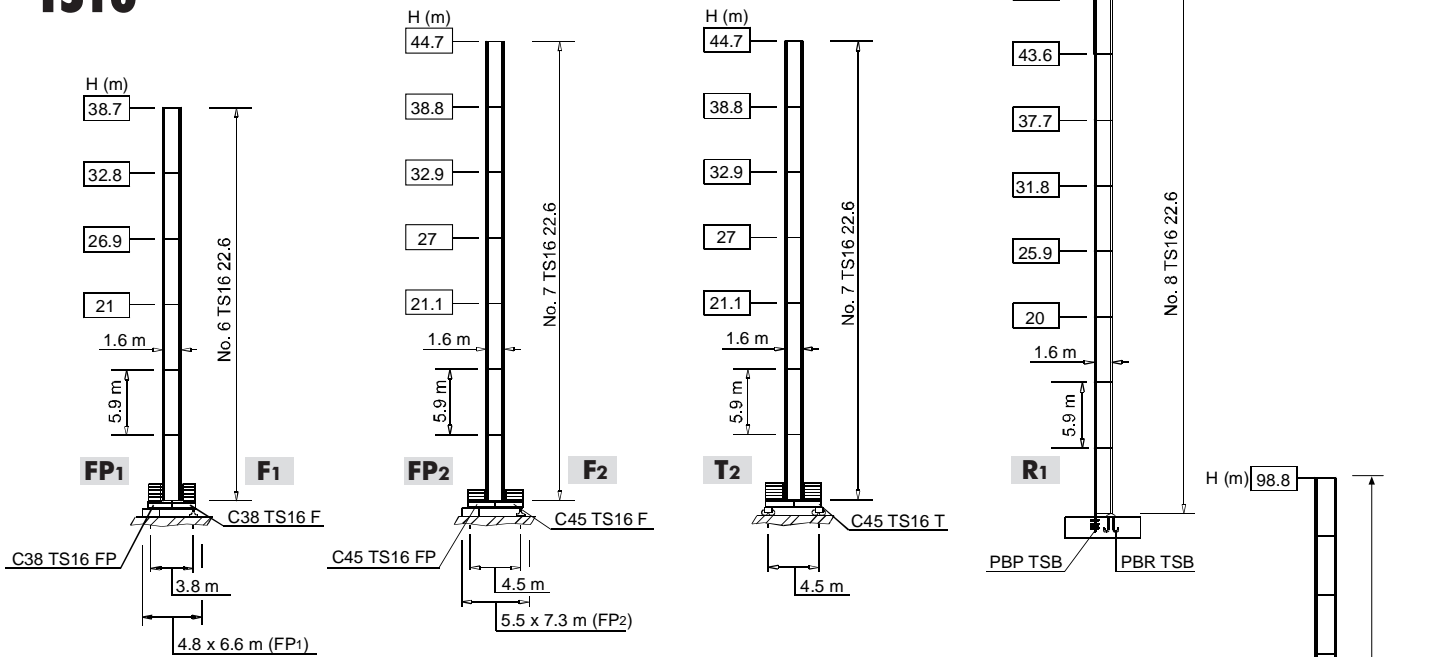
**F** Les éléments de mât TS sont disponibles en longueur 11.8 m (seulement TS16), 5.9 m, 2.95 m.

**E** Los tramos de torre TS son disponibles en las medidas de largo 11.8 m (sólo TS16), 5.9 m, 2.95 m.

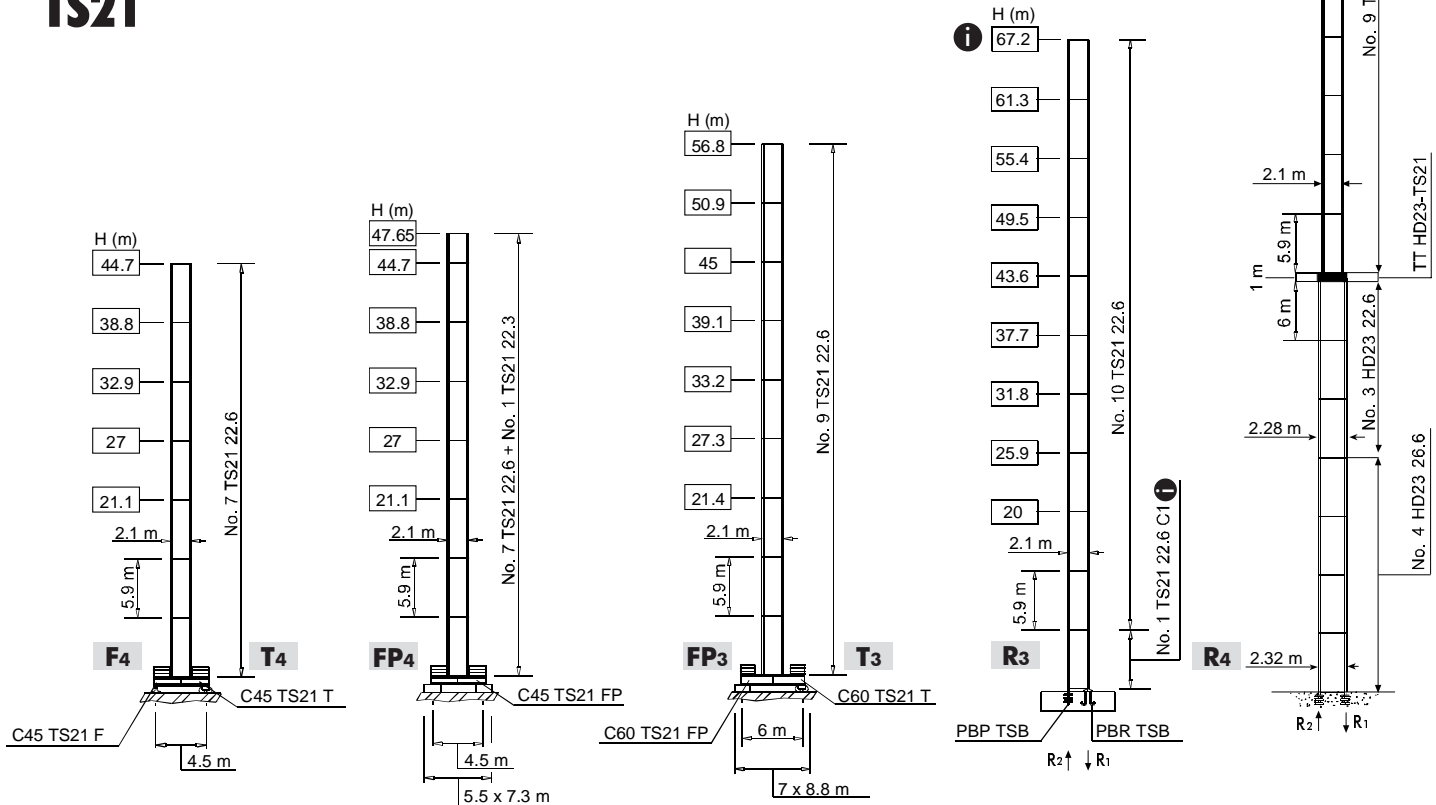
**GB** The available lengths for the TS tower sections are 11.8 m (only TS16), 5.9 m, 2.95 m.

**D** Die Turmschüsse TS sind mit Längen 11.8 m (nur TS16), 5.9 m, 2.95 m verfügbar.

**TS16**



**TS21**



**H** Altezza massima sotto gancio

**I** Max. under hook height

**GB** Hauteur maxi. sous crochet

**F** Höchste Hackenhöhe

**D** Maxima altura bajo gancho

**E**

<b>Meccanismi</b>	<b>I</b>	<b>Mécanismes</b>	<b>F</b>	<b>Mecanismos</b>	<b>E</b>
<b>Mechanisms</b>	<b>GB</b>	<b>Antriebe</b>	<b>D</b>		

	18 APC 30	55 * kVA	400 V - 50 Hz
	22 AFC 30	61 * kVA	400 V - 50 Hz / 460 V - 60 Hz
			2000/14/CE

\* Gru senza traslazione / Crane without travelling equipment / Grue sans translation / Krane ohne Schienenfahren / Grúa sin traslación

			m/min	f	kW	
	<b>18 APC 30</b>		7	3	18	220 m
			30	3		
			59	1.5		
			3.5	6		
			15	6		
	<b>22 AFC 30 (VARIANT)</b>		29.5	3	22	300 m 380 m (LEBUS)
			0 ⇌ 2.4	3		
			2.4 ⇌ 9	3		
			9 ⇌ 38	3		
			38 ⇌ 61	1.88		
		61 ⇌ 77	1.43			
		0 ⇌ 1.2	6			
		1.2 ⇌ 4.5	6			
		4.5 ⇌ 19	6			
		19 ⇌ 30.5	3.76			
		30.5 ⇌ 38.5	2.86			

	<b>DVF 3 4 (VARIANT)</b>	0 ⇌ 6 ⇌ 32 ⇌ 64 m/min	4 kW
	<b>SSR 2 2 65</b>	0.7 r.p.m. (50 Hz)   0.84 r.p.m. (60 Hz)	2 × 65 Nm
	<b>▲ TAD 2RP 2M4</b>	0 - 24 m/min	2 × 4 kW
	<b>● TAD 2RG 4M3</b>		4 × 3 kW
		<b>i</b>	

	Max. H [m]	
<b>T<sub>2</sub>-T<sub>4</sub></b>	38.8	> 38.8
<b>T<sub>3</sub></b>	39.1	> 39.1

	Sollevamento	<b>I</b>	Hoisting	<b>GB</b>	Levage	<b>F</b>	Heben	<b>D</b>	Elevación	<b>E</b>
	Traslazione carrello		Trolleying		Distribution		Katzfahren		Distribución	
	Rotazione		Slewing		Orientation		Schwenken		Orientación	
	Traslazione		Travelling		Translation		Schienenfahren		Traslación	
	Direttiva sul livello acustico		Directive on noise level		Directive sur le niveau acoustique		Richtlinie für den Schall-Leistungspegel		Directiva sobre el nivel acustico	
	Consultateci		Consult us		Nous consulter		Auf Anfrage		Consultarnos	
	Potenza totale richiesta		Power requirements		Puissance totale nécessaire		Geforderte Stromstärke		Potencia necesaria	
	Alimentazione		Power supply		Alimentation		Stromversorgung		Alimentación	

**Gru Comedil s.r.l.**

A Terex Company



Via S. Egidio 42/A, 33074 Fontanafredda (PN) - Italy  
Tel. (+39) 0434 567 311 - Telefax (+39) 0434 998631

Internet e-mail: info@comedil.com  
Internet home page: www.comedil.com

**Divisione Automontanti**

Via Alessandrina, 25 - 20095 Cusano Milanino (MI) - Italy  
Tel. (+39) 02 613 16011 - Telefax (+39) 02 613 16034

Internet e-mail: info.CBR@comedil.com