

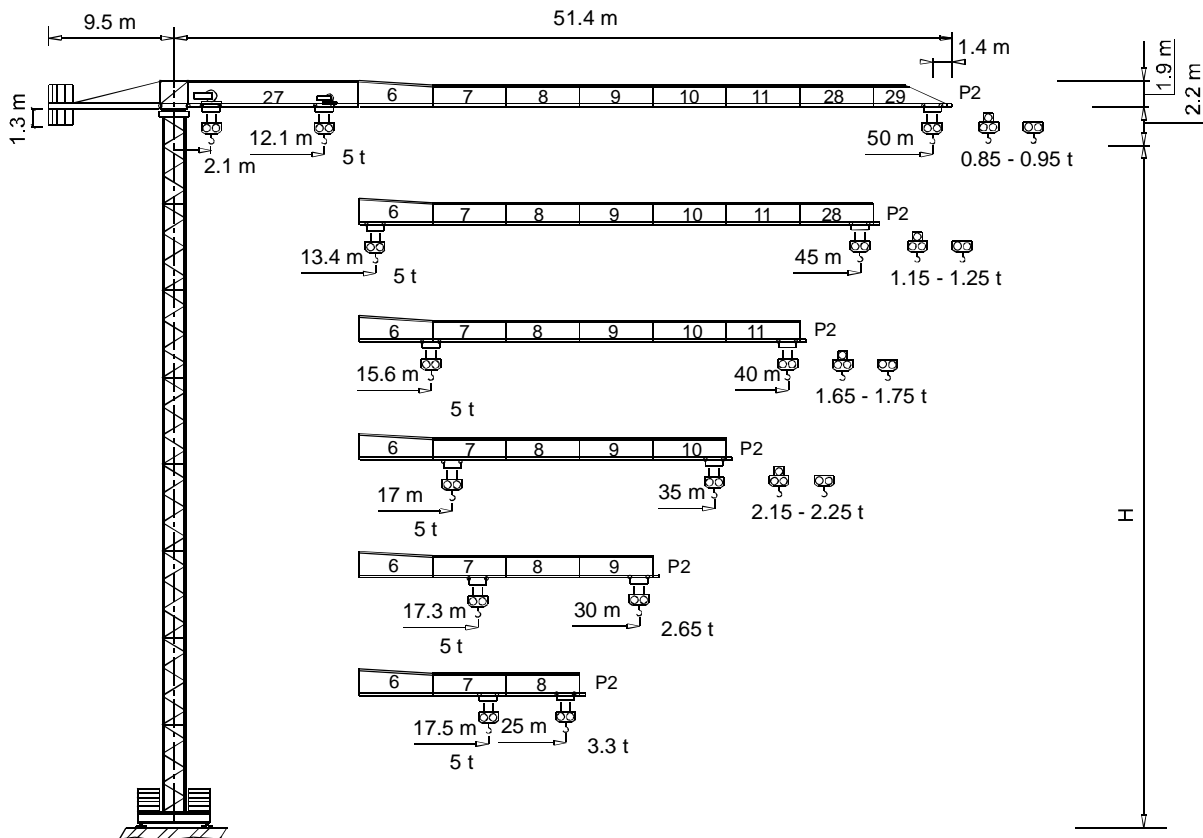


TEREX | COMEDIL

Gru a torre "Flat Top"

"Flat Top" Tower Crane • Grue à tour "Flat Top"

"Flat Top" Turmdrehkran • Grúa torre "Flat Top"



CE FEM 1.001 A3

THE **ULTIMATE** CRANE™

Dati illustrativi non impegnativi
Con riserva di modifica senza preavviso

Specifications and data not binding
Subject to modification without notice

Données techniques seulement indicatives
Modifications réservées sans préavis

Angaben und Beschreibung unverbindlich
Änderungen vorbehalten ohne weitere Mitteilung

Dibujos y datos sin compromiso
Modificaciones reservadas sin preaviso

UTE.DOC.REV.000 10_2005

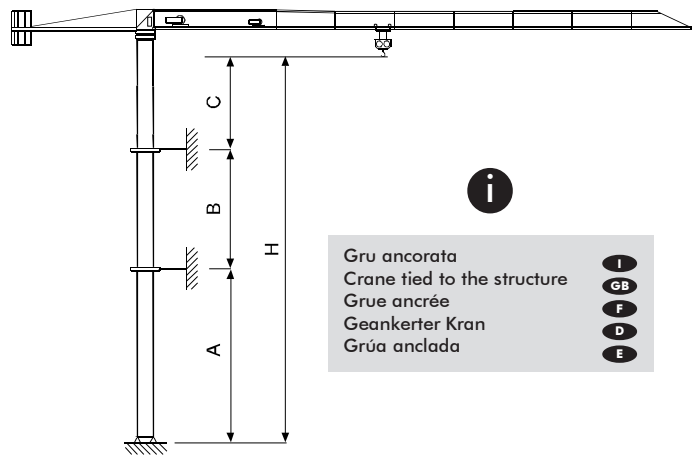
"CTT 71-5 TS12"

Diagramma di portata **I**
Load Diagram **GB**
Courbes de charges **F**
Lastkurven **D**
Curvas de cargas **E**

CTT 71-5

| | | m | CTT 71-5 | | | | | | | | | | | | |
|-------|---|--------|----------|-----|-----|------|------|------|------|------|------|------|------|--|--|
| | | | 5 | 10 | 15 | 20 | 25 | 30 | 35 | 40 | 45 | 50 | | | |
| 2.5 t | - | 22.8 m | t | 2.5 | 2.5 | 2.5 | 2.5 | 2.23 | 1.80 | 1.49 | 1.27 | 1.10 | 0.95 | | |
| 2.5 t | - | 21.9 m | t | 2.5 | 2.5 | 2.5 | 2.5 | 2.12 | 1.69 | 1.39 | 1.16 | 1 | 0.85 | | |
| 5 t | - | 12.1 m | t | 5 | 5 | 3.84 | 2.76 | 2.12 | 1.69 | 1.39 | 1.16 | 1 | 0.85 | | |
| 2.5 t | - | 25.3 m | t | 2.5 | 2.5 | 2.5 | 2.5 | 2.5 | 2.04 | 1.70 | 1.45 | 1.25 | | | |
| 2.5 t | - | 24.4 m | t | 2.5 | 2.5 | 2.5 | 2.5 | 2.5 | 1.93 | 1.60 | 1.34 | 1.15 | | | |
| 5 t | - | 13.4 m | t | 5 | 5 | 4.34 | 3.12 | 2.41 | 1.93 | 1.60 | 1.34 | 1.15 | | | |
| 2.5 t | - | 29.6 m | t | 2.5 | 2.5 | 2.5 | 2.5 | 2.5 | 2.5 | 2.05 | 1.75 | | | | |
| 2.5 t | - | 28.6 m | t | 2.5 | 2.5 | 2.5 | 2.5 | 2.5 | 2.34 | 1.95 | 1.65 | | | | |
| 5 t | - | 15.6 m | t | 5 | 5 | 5 | 3.74 | 2.90 | 2.34 | 1.95 | 1.65 | | | | |
| 2.5 t | - | 32.1 m | t | 2.5 | 2.5 | 2.5 | 2.5 | 2.5 | 2.5 | 2.25 | | | | | |
| 2.5 t | - | 31 m | t | 2.5 | 2.5 | 2.5 | 2.5 | 2.5 | 2.5 | 2.15 | | | | | |
| 5 t | - | 17 m | t | 5 | 5 | 5 | 4.10 | 3.19 | 2.58 | 2.15 | | | | | |
| 2.5 t | - | 30 m | t | 2.5 | 2.5 | 2.5 | 2.5 | 2.5 | 2.5 | | | | | | |
| 5 t | - | 17.3 m | t | 5 | 5 | 5 | 5 | 3.27 | 2.65 | | | | | | |
| 2.5 t | - | 25 m | t | 2.5 | 2.5 | 2.5 | 2.5 | 2.5 | | | | | | | |
| 5 t | - | 17.5 m | t | 5 | 5 | 5 | 5 | 3.30 | | | | | | | |

Altre installazioni **I**
Other configurations **GB**
Autres implantations **F**
Aufstellmöglichkeiten **D**
Otras implantaciones **E**



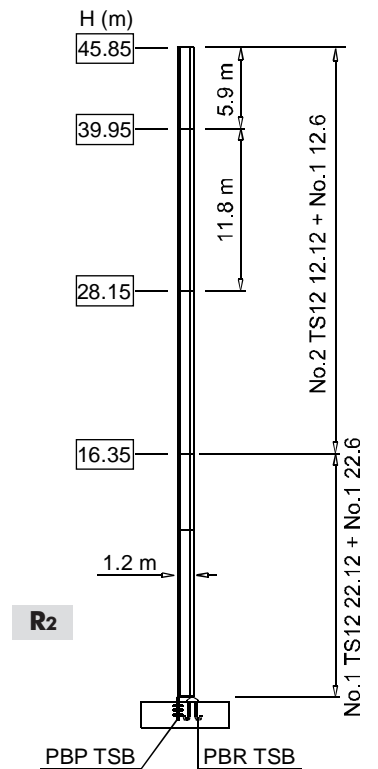
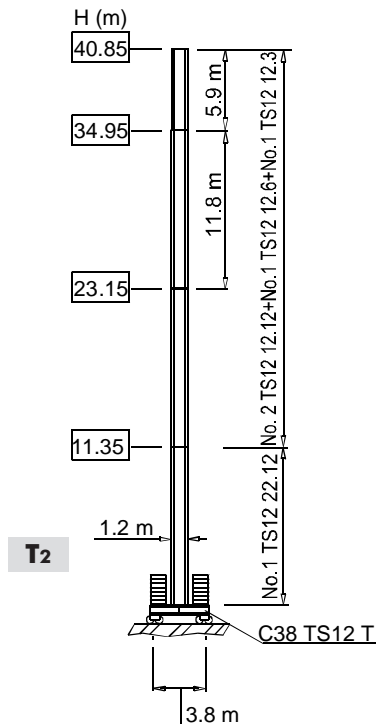
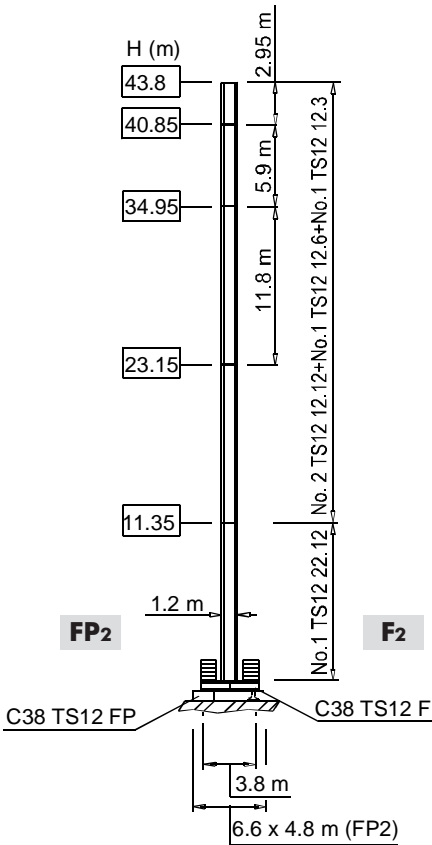
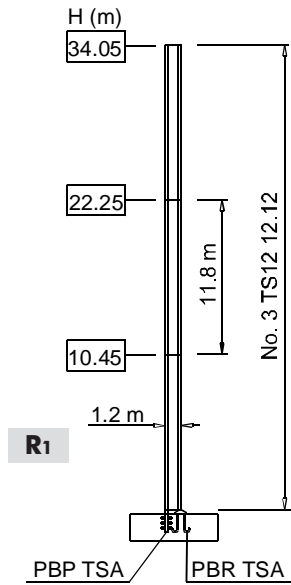
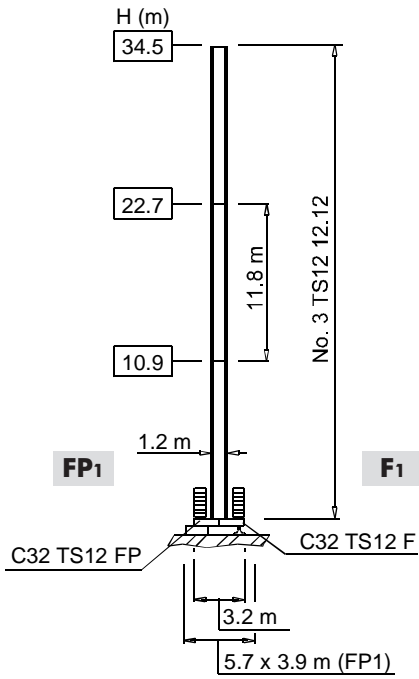
i

Gru ancorata **I**
 Crane tied to the structure **GB**
 Grue ancrée **F**
 Geankerter Kran **D**
 Grúa anclada **E**

Torre **I** Tower **GB** Tour **F** Turm **D** Torre **E**

- I** Le prolungh TS sono disponibili in lunghezza 11.8 m, 5.9 m, 2.95 m.
- F** Les éléments de mât TS sont disponibles en longueur 11.8 m, 5.9 m, 2.95 m.
- E** Los tramos de torre TS son disponibles en las medidas de largo 11.8 m, 5.9 m, 2.95 m.
- GB** The available lengths for the TS tower sections are 11.8 m, 5.9 m, 2.95 m.
- D** Die Turmschüsse TS sind mit Längen 11.8 m, 5.9 m, 2.95 m verfügbar.

TS12



| | | | | | |
|-------------------|-----------|-------------------|----------|-------------------|----------|
| Meccanismi | I | Mécanismes | F | Mecanismos | E |
| Mechanisms | GB | Antriebe | D | | |

| | | | |
|--|-----------|----------|-------------------------------|
| | | | |
| | 11 APC 25 | 27 * kVA | 400 V - 50 Hz |
| | 15 AFC 25 | 38 * kVA | 400 V - 50 Hz / 460 V - 60 Hz |
| | | | 2000/14/CE |

* Gru senza traslazione / Crane without travelling equipment / Grue sans translation / Krane ohne Schienenfahren / Grúa sin traslación

| | | | m/min | i | kW | | |
|--|----------------------------|----------|-----------|---------|------|-------|----|
| | 11 APC 25 | | 6 | 2.5 | 11 | 186 m | |
| | | | 20 | 2.5 | | | |
| | | | 40 | 1.25 | | | |
| | | | 3 | 5 | | | |
| | | | 10 | 5 | | | |
| | 15 AFC 25 (VARIANT) | | | 20 | 2.5 | | 15 |
| | | | | 0 ⇌ 1.7 | 2.5 | | |
| | | | | 1.7 ⇌ 6 | 2.5 | | |
| | | | | 6 ⇌ 28 | 2.5 | | |
| | | | | 28 ⇌ 46 | 1.44 | | |
| | | 46 ⇌ 57 | | 1.1 | | | |
| | | 0 ⇌ 0.85 | | 5 | | | |
| | | 0.85 ⇌ 3 | | 5 | | | |
| | | 3 ⇌ 14 | | 5 | | | |
| | | 14 ⇌ 23 | | 2.88 | | | |
| | | | 23 ⇌ 28.5 | 2.2 | | | |

| 400 v - 50 Hz | | | |
|---------------|-----------------------------|-----------------------|------------|
| | DAD 2 2 D1 | 0 - 22 - 44 m/min | 2.2-1.5 kW |
| | DVF 3 4 D4 (VARIANT) | 0 ⇌ 6 ⇌ 30 ⇌ 60 m/min | 4 kW |
| | SSR 1 1 50 | 0 ⇌ 0.76 r.p.m. | 1 x 50 Nm |
| | TAD 1 RP 2M3 | 0 - 24 m/min | 2 x 3 kW |
| | | i | |

| | | | | | | | | | | |
|--|--------------------------------|----------|--------------------------|-----------|------------------------------------|----------|--|----------|-----------------------------------|----------|
| | Sollevamento | I | Hoisting | GB | Levage | F | Heben | D | Elevación | E |
| | Traslazione carrello | | Trolleying | | Distribution | | Katzfahren | | Distribución | |
| | Rotazione | | Slewing | | Orientation | | Schwenken | | Orientación | |
| | Traslazione | | Travelling | | Translation | | Schienenfahren | | Traslación | |
| | Direttiva sul livello acustico | | Directive on noise level | | Directive sur le niveau acoustique | | Richtlinie für den Schall-Leistungspegel | | Directiva sobre el nivel acustico | |
| | Consultateci | | Consult us | | Nous consulter | | Auf Anfrage | | Consultarnos | |
| | Potenza totale richiesta | | Power requirements | | Puissance totale nécessaire | | Geforderte Stromstärke | | Potencia necesaria | |
| | Alimentazione | | Power supply | | Alimentation | | Stromversorgung | | Alimentación | |

Gru Comedil s.r.l.
 A Terex Company

 certificato in accordo alla norma iso 9001:2000

Via S. Egidio 42/A, 33074 Fontanafredda (PN) - Italy
 Tel. (+39) 0434 567 311 - Telefax (+39) 0434 998631

Internet e-mail: info@comedil.com
 Internet home page: www.comedil.com

Divisione Automontanti

Via Alessandrina, 25 - 20095 Cusano Milanino (MI) - Italy
 Tel. (+39) 02 613 16011 - Telefax (+39) 02 613 16034

Internet e-mail: info.CBR@comedil.com