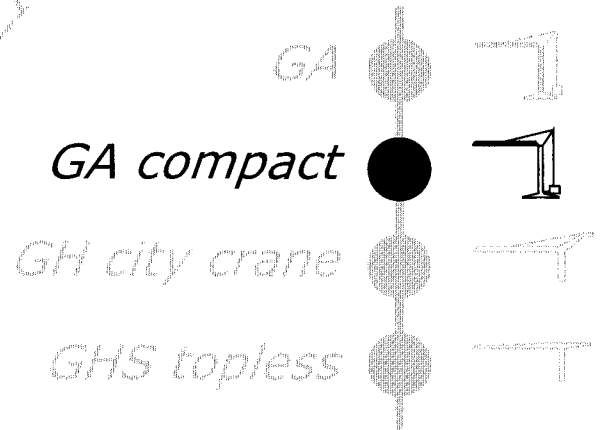


# GRU ATORRE

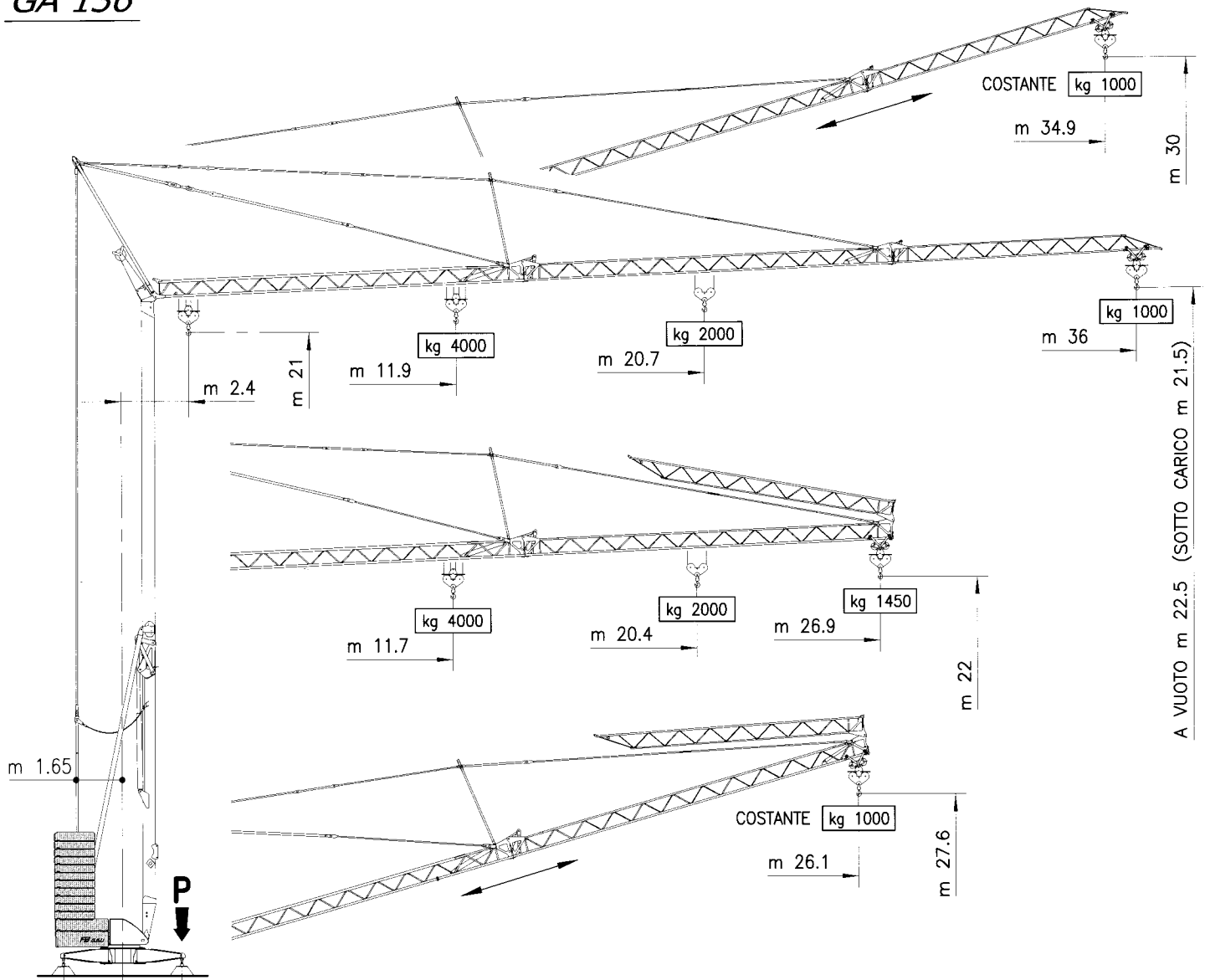
# GA 136

GRU AUTOMATICA CON  
MONTAGGIO IDRAULICO



FB F.lli Butti s.r.l.  
Via M. de' Servi  
37012 Montebelluna (TV) - Italy  
Tel. +39 0422 4611 Fax +39 0422 460162  
E-mail: [fbgru@fbgru.it](mailto:fbgru@fbgru.it) [www.fbgru.it](http://www.fbgru.it)


CE



A VUOTO m 22.5 (SOTTO CARICO m 21.5)

P	● kg 23021	■ kg 15881
---	------------	------------

- *In servizio*      ● En servicio      ● In service      ● In betrieb      ● En service
- *Fuori servizio*      ■ Fuera ce servicio      ■ Out of service      ■ Außer betrieb      ■ Hors service

	kg 19550	kg 12800
---	----------	----------

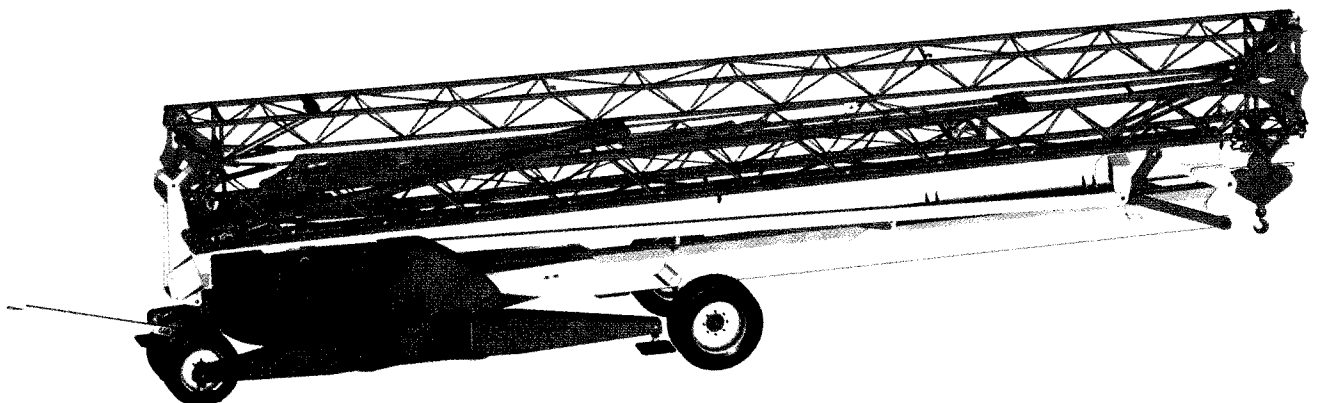
**Peso con zavorra di montaggio**

Peso de la grua con lastre de montaje  
Crane weight with erection ballast  
Gewicht ohne montage-ballast  
Poids avec lest de montage

**Peso senza zavorra di montaggio**

Peso de construcción  
Weight without erection ballast  
Konstruktionsgewicht  
Poids sans lest de montage


**LA GRU** LA GRÚA — CRANE  
KLAN — GRUE

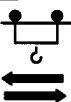



# MECCANISMI

MECANISMOS — MECHANISMS  
ANTRIEBE — MÉCANISMES

<b>MOVIMENTO</b> MOVIMIENTO MOVEMENT BEWEGUNG MOUVEMENT	<b>ALIMENTAZIONE</b> ALIMENTACION OPERATING VOLTAGE BETRIEBSSPANNUNG TENSION DE SERVICE	<b>PRESTAZIONI</b> FUNCIONAMIENTOS PERFORMANCES LEISTUNGEN EXÉCUTIONS	<b>POTENZA NECESSARIA</b> POTENCIA NECESARIA POWER REQUIREMENT KRAFTBEDARF PUISSANCE NÉCESSAIRE
---	---	---	---

<b>SOLLEVAMENTO</b> ELEVACION — HOISTING HEBEN — LEVAGE    <b>INVERTER</b>	400 V 50 Hz	▷ m/1' - kg	▷▷ m/1' - kg	▷▷▷ m/1' - kg	kW 9.2
		II 5 ↓↑	II 26 ↑   II 27 ↓	II 40 ↑   II 42 ↓	
		2000	2000	1000	
		IV 3 ↓↑	IV 13 ↑   IV 14 ↓	IV 20 ↑   IV 21 ↓	
		4000	4000	2000	

<b>CARRELLO</b> CARRILLO — JIB TROLLEY LAUFKATZE — DISTRIBUTION    <b>INVERTER</b>	400 V 50 Hz	▷ m/1'	▷▷ m/1'	▷▷▷ m/1'	kW 3
		18	30	56	

<b>ROTAZIONE</b> ROTACION — SLEWING DREHEN — ORIENTATION    <b>INVERTER</b>	400 V 50 Hz	▷ g/1'	▷▷ g/1'	▷▷▷ g/1'	kW 3
		0 → 0.15	0.15 → 0.6	0.6 → 0.85	



Conforme alle direttive  
CEE sul livello acustico  
2000/14/CE

Conforme con las directivas  
CEE sobre el nivel acústico


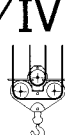
In compliance with the EEC  
instructions on noise level

Gemäss EWG-Richtlinien für  
den Schal-Leistungspegel

Conforme aux directives CEE  
sur le niveau acoustique

## CURVE DI CARICO

CURVAS DE CARGAS — LOAD DIAGRAMS  
LASTKURVEN — COURBES DE CHARGES

<b>II</b>   <b>IV</b> 	m	11.9	14	16	18	20.7	22	24	26	28	30	32	34	36
	kg	IV	IV	IV	IV	II	II	II	II	II	II	II	II	II
		4000	3302	2827	2349	2000	1862	1682	1532	1404	1293	1197	1113	1000

### BRACCIO IMPENNATO

FLECHA IZADA  
LUFFING JIB  
AUSLEGER IN STEILSTELLUNG  
FLÈCHE RELÈVÉE





Carrellino distributore

Carrellino distribuidor — Traversing trolley  
Verfahrbare Laufkatze — Chariot distributeur

kg 1000

## POTENZA RICHIESTA

POTENCIA-ELECTRICA NECESARIA — NECESSARY ELECTRIC POWER  
KRAFTBEDARF — PUISSANCE ELECTRIQUE NÉCESSAIRE

<b>ALIMENTAZIONE TRIFASE</b> TRIFASICA THREE PHASE DREIPHASIGE TRIPHASE	<b>15 kw</b> 400 V - 50 Hz	<b>SOLLEVAMENTO</b> ELEVACION HOISTING HEBEN LEVAGE	<b>II</b>  kg 2000  <b>IV</b>  kg 4000
---	----------------------------	---	--

Con riserva di modifiche

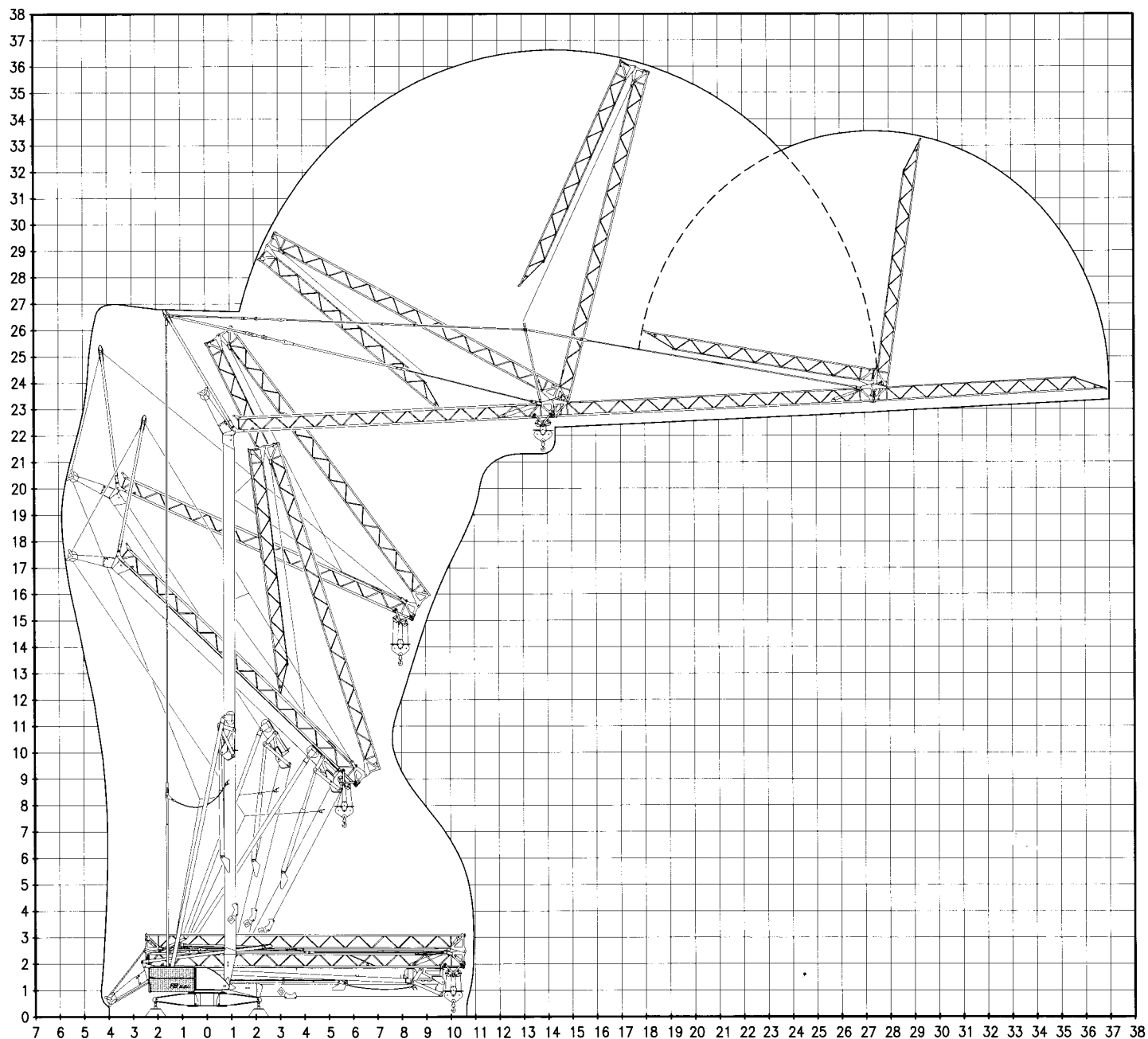
Derecho de modificaciones reservadas

Subject to change without notice

Änderungen vorbehalten

Modifications réservés

**MONTAGGIO** MONTAJE — ERECTION  
MONTAGE — MONTAGE



**TRASPORTO** TRANSPORTE — TRANSPORT  
TRANSPORT — TRANSPORT

