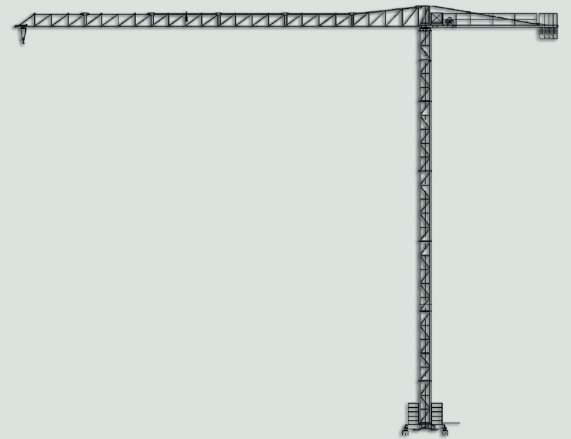


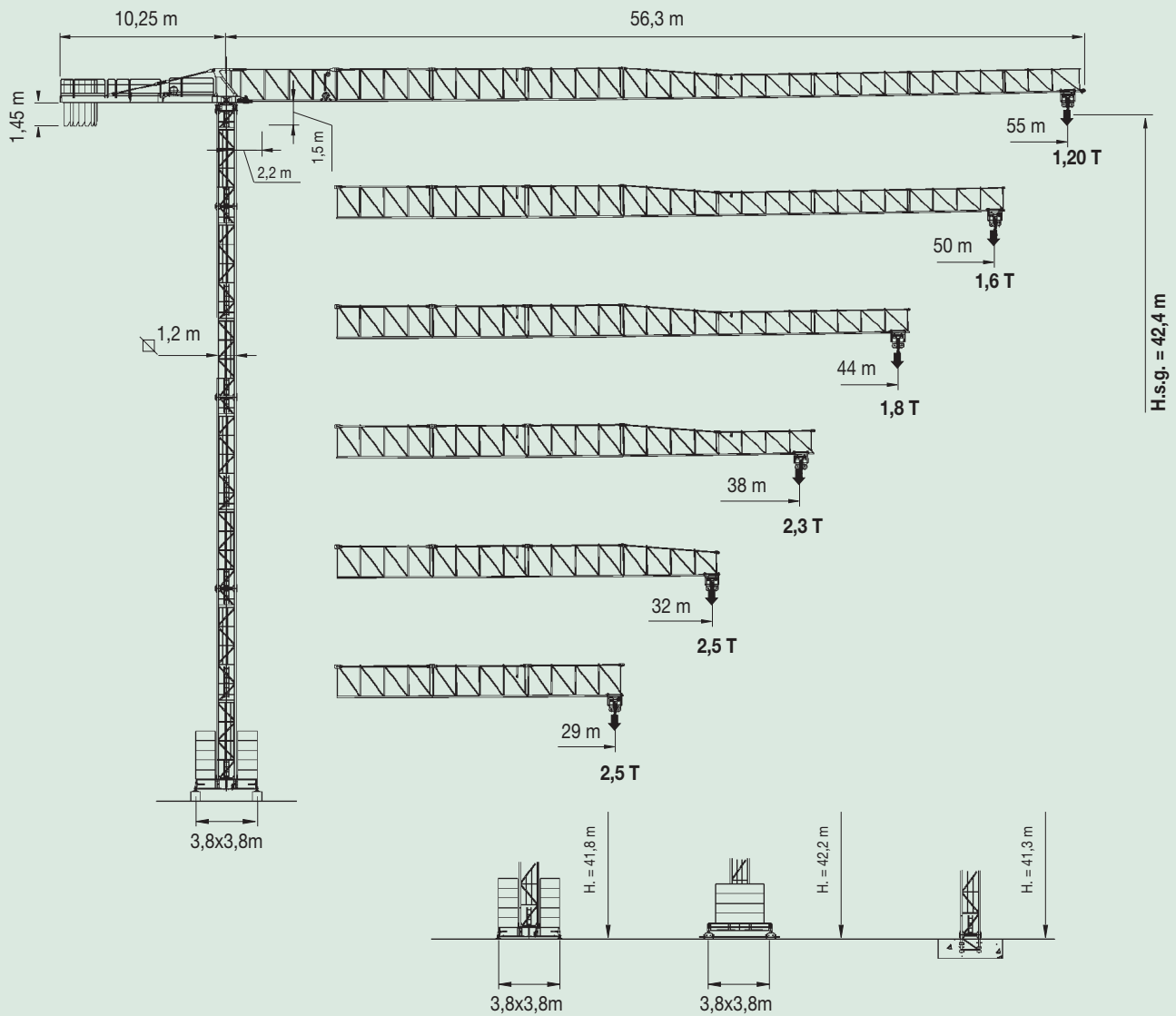


# GRD 55

*Gru da città senza cuspidè  
Top less city crane  
City kran ohne turmspitze  
City grue sans poinçon*



**RDLIFT**



A3 FEM1,001

## GRD 55

**Gru da città senza cuspidè**



Top less city crane

City kran ohne turmspitze



City grue sans poinçon





## Raggi e portate - Radius and s.w.l.

| Portata max / Max s.w.l.                 |      | 2500 kg.  |       |      |       |      |      |
|--|------|---|-------|------|-------|------|------|
|  |      |   |       |      |       |      |      |
| Braccio / Jib (m.)                       |      | 55  | 50    | 44   | 38    | 32   | 29   |
| Campo di portata max<br>Max s.w.l. range |      | 28,66   | 33,45 | 32,7 | 35,22 | 32   | 29   |
| Raggi (m.)<br>Radius (m.)                | 27   | 2500  | 2500  | 2500 | 2500  | 2500 | 2500 |
|  | 28   | 2500  | 2500  | 2500 | 2500  | 2500 | 2500 |
|  | 29   | 2460  | 2500  | 2500 | 2500  | 2500 | 2500 |
|  | 30   | 2377  | 2500  | 2500 | 2500  | 2500 |      |
|  | 31   | 2292  | 2500  | 2500 | 2500  | 2500 |      |
|  | 32   | 2213  | 2500  | 2500 | 2500  | 2500 |      |
|  | 33   | 2139  | 2500  | 2475 | 2500  |      |      |
|  | 34   | 2069  | 2456  | 2395 | 2500  |      |      |
|  | 35   | 2004  | 2379  | 2320 | 2500  |      |      |
|  | 36   | 1942  | 2306  | 2249 | 2441  |      |      |
|  | 37   | 1883  | 2237  | 2182 | 2368  |      |      |
|  | 38   | 1828  | 2173  | 2119 | 2300  |      |      |
|  | 39   | 1775  | 2111  | 2059 |       |      |      |
|  | 40   | 1726  | 2053  | 2002 |       |      |      |
|  | 41   | 1678  | 1997  | 1947 |       |      |      |
|  | 42   | 1633  | 1945  | 1896 |       |      |      |
|  | 43   | 1590  | 1894  | 1847 |       |      |      |
|  | 44   | 1550  | 1846  | 1800 |       |      |      |
|  | 45   | 1511  | 1801  |      |       |      |      |
|  | 46   | 1473  | 1757  |      |       |      |      |
|  | 47   | 1438  | 1715  |      |       |      |      |
|  | 48   | 1404  | 1675  |      |       |      |      |
|  | 49   | 1371  | 1637  |      |       |      |      |
|  | 50   | 1340  | 1600  |      |       |      |      |
|  | 51   | 1309  |       |      |       |      |      |
| 52                                       | 1280 |   |       |      |       |      |      |
| 53                                       | 1253 |   |       |      |       |      |      |
| 54                                       | 1226 |   |       |      |       |      |      |
| 55                                       | 1200 |   |       |      |       |      |      |

## Raggi e portate - Radius and s.w.l.

| Portata max<br>Max s.w.l.                |             | 3000 kg.  |             |             |             |             |             | 6000 kg.  |             |             |             |             |             |
|--|-------------|---|-------------|-------------|-------------|-------------|-------------|---|-------------|-------------|-------------|-------------|-------------|
|  |             |  |             |             |             |             |             |  |             |             |             |             |             |
| Braccio / Jib (m.)                       |             | 55  | 50          | 44          | 38          | 32          | 29          | 55  | 50          | 44          | 38          | 32          | 29          |
| Campo di portata max<br>Max s.w.l. range |             | 24,28   | 28,32       | 27,68       | 29,81       | 31,02       | 29          | 12,72   | 14,76       | 14,44       | 15,52       | 16,62       | 16,45       |
| Raggi (m.)<br>Radius (m.)                | 14          | 3000  | 3000        | 3000        | 3000        | 3000        | 3000        | 5388  | 6000        | 6000        | 6000        | 6000        | 6000        |
|  | 16          | 3000  | 3000        | 3000        | 3000        | 3000        | 3000        | 4638  | 5485        | 5353        | 5799        | 6000        | 6000        |
|  | 18          | 3000  | 3000        | 3000        | 3000        | 3000        | 3000        | 4064  | 4812        | 4695        | 5089        | 5495        | 5432        |
|  | 20          | 3000  | 3000        | 3000        | 3000        | 3000        | 3000        | 3610  | 4280        | 4175        | 4528        | 4892        | 4835        |
|  | 22          | 3000  | 3000        | 3000        | 3000        | 3000        | 3000        | 3243  | 3849        | 3754        | 4073        | 4402        | 4351        |
|  | 24          | 3000  | 3000        | 3000        | 3000        | 3000        | 3000        | 2939  | 3492        | 3406        | 3697        | 3998        | 3951        |
|  | 26          | 2754  | 3000        | 3000        | 3000        | 3000        | 3000        | 2683  | 3192        | 3113        | 3381        | 3658        | 3615        |
|  | 28          | 2565  | 3000        | 2963        | 3000        | 3000        | 3000        | 2465  | 2937        | 2863        | 3111        | 3368        | 3328        |
|  | 29          | 2468  | 2923        | 2852        | 3000        | 3000        | <b>3000</b> | 2368  | 2823        | 2752        | 2991        | 3238        | <b>3200</b> |
|  | 30          | 2377  | 2816        | 2748        | 2979        | 3000        |             | 2277  | 2716        | 2648        | 2879        | 3118        |             |
|  | 32          | 2213  | 2624        | 2560        | 2777        | <b>2900</b> |             | 2113  | 2524        | 2460        | 2677        | <b>2900</b> |             |
|  | 34          | 2069  | 2456        | 2395        | 2598        |             |             | 1969  | 2356        | 2295        | 2498        |             |             |
|  | 36          | 1942  | 2306        | 2249        | 2441        |             |             | 1842  | 2206        | 2149        | 2341        |             |             |
|  | 38          | 1828  | 2173        | 2119        | <b>2300</b> |             |             | 1728  | 2073        | 2019        | <b>2200</b> |             |             |
|  | 40          | 1726  | 2053        | 2002        |             |             |             | 1626  | 1954        | 1902        |             |             |             |
|  | 42          | 1633  | 1945        | 1896        |             |             |             | 1533  | 1845        | 1796        |             |             |             |
|  | 44          | 1550  | 1846        | <b>1800</b> |             |             |             | 1450  | 1746        | <b>1700</b> |             |             |             |
|  | 46          | 1473  | 1757        |             |             |             |             | 1373  | 1657        |             |             |             |             |
|  | 48          | 1404  | 1675        |             |             |             |             | 1304  | 1575        |             |             |             |             |
|  | 50          | 1340  | <b>1600</b> |             |             |             |             | 1240  | <b>1500</b> |             |             |             |             |
| 52                                       | 1280        |   |             |             |             |             | 1180        |   |             |             |             |             |             |
| 54                                       | 1226        |   |             |             |             |             | 1126        |   |             |             |             |             |             |
| 55                                       | <b>1200</b> |   |             |             |             |             | <b>1100</b> |   |             |             |             |             |             |

| Portata max<br>Max s.w.l.                |             | 4000 kg.  |       |             |             |             |             | 8000 kg.  |       |             |             |             |             |
|--|-------------|---|-------|-------------|-------------|-------------|-------------|---|-------|-------------|-------------|-------------|-------------|
|  |             |  |       |             |             |             |             |  |       |             |             |             |             |
| Braccio / Jib (m.)                       |             | 55  | 50    | 44          | 38          | 32          | 29          | 55  | 50    | 44          | 38          | 32          | 29          |
| Campo di portata max<br>Max s.w.l. range |             | 19,94   | 22,72 | 25,04       | 25,55       | 25,52       | 29          | 10,67   | 12,10 | 13,29       | 13,55       | 13,53       | 13,70       |
| Raggi (m.)<br>Radius (m.)                | 12          | 4000  | 4000  | 4000        | 4000        | 4000        | 4000        | 6988  | 8000  | 8000        | 8000        | 8000        | 8000        |
|  | 14          | 4000  | 4000  | 4000        | 4000        | 4000        | 4000        | 5857  | 6776  | 7542        | 7708        | 7699        | 7808        |
|  | 16          | 4000  | 4000  | 4000        | 4000        | 4000        | 4000        | 5026  | 5823  | 6487        | 6631        | 6624        | 6711        |
|  | 18          | 4000  | 4000  | 4000        | 4000        | 4000        | 4000        | 4389  | 5093  | 5680        | 5807        | 5800        | 5872        |
|  | 20          | 3985  | 4000  | 4000        | 4000        | 4000        | 4000        | 3885  | 4516  | 5041        | 5155        | 5149        | 5209        |
|  | 22          | 3577  | 4000  | 4000        | 4000        | 4000        | 4000        | 3477  | 4048  | 4523        | 4626        | 4621        | 4673        |
|  | 24          | 3240  | 3761  | 4000        | 4000        | 4000        | 4000        | 3148  | 3631  | 4095        | 4189        | 4184        | 4230        |
|  | 26          | 2956  | 3436  | 3835        | 3922        | 3918        | 4000        | 2856  | 3336  | 3735        | 3822        | 3818        | 3858        |
|  | 28          | 2714  | 3159  | 3529        | 3609        | 3605        | 4000        | 2614  | 3059  | 3429        | 3509        | 3505        | 3541        |
|  | 29          | 2608  | 3012  | 3360        | 3478        | 3474        | <b>4000</b> | 2505  | 2932  | 3285        | 3369        | 3364        | <b>3400</b> |
|  | 30          | 2506  | 2920  | 3264        | 3339        | 3335        |             | 2406  | 2820  | 3164        | 3239        | 3235        |             |
|  | 32          | 2324  | 2711  | 3034        | 3104        | <b>3100</b> |             | 2224  | 2611  | 2934        | 3004        | <b>3000</b> |             |
|  | 34          | 2164  | 2528  | 2831        | 2897        |             |             | 2064  | 2428  | 2731        | 2797        |             |             |
|  | 36          | 2023  | 2366  | 2652        | 2714        |             |             | 1923  | 2266  | 2552        | 2614        |             |             |
|  | 38          | 1896  | 2221  | 2491        | <b>2550</b> |             |             | 1796  | 2121  | 2391        | <b>2450</b> |             |             |
|  | 40          | 1783  | 2091  | 2348        |             |             |             | 1683  | 1991  | 2248        |             |             |             |
|  | 42          | 1681  | 1974  | 2218        |             |             |             | 1581  | 1874  | 2118        |             |             |             |
|  | 44          | 1588  | 1867  | <b>2100</b> |             |             |             | 1488  | 1767  | <b>2000</b> |             |             |             |
|  | 46          | 1503  | 1770  |             |             |             |             | 1483  | 1670  |             |             |             |             |
|  | 48          | 1426  | 1682  |             |             |             |             | 1326  | 1582  |             |             |             |             |
| 50                                       | 1355        | <b>1600</b>   |       |             |             |             | 1255        | <b>1500</b>   |       |             |             |             |             |
| 52                                       | 1289        |   |       |             |             |             | 1189        |   |       |             |             |             |             |
| 54                                       | 1229        |   |       |             |             |             | 1129        |   |       |             |             |             |             |
| 55                                       | <b>1200</b> |   |       |             |             |             | <b>1100</b> |   |       |             |             |             |             |

## Altezza sottogancio, zavorra di base, reazioni - H.U.H., max base ballast, corner pressure

| Diagram 1 |       |         | Diagram 2 |       |         | Diagram 3 |       |         | Diagram 4 |         |         |
|-----------|-------|---------|-----------|-------|---------|-----------|-------|---------|-----------|---------|---------|
| HuH (m)   | Z (t) | F1 (t.) | HuH (m)   | Z (t) | F1 (t.) | HuH (m)   | Z (t) | F1 (t.) | HuH (m)   | F2 (t.) | F3 (t.) |
| 42,6      | 60    | 52      | 42,0      | 60    | 52      | 42,5      | 60    | 52      | 41,3      | 90      | 68      |
| 36,7      | 50    | 47      | 36,1      | 50    | 47      | 36,6      | 50    | 47      | 35,4      | 82      | 61      |
| 30,8      | 50    | 44      | 30,2      | 50    | 44      | 30,7      | 50    | 44      | 29,5      | 72      | 52      |
| 24,9      | 40    | 40      | 24,3      | 40    | 40      | 24,8      | 40    | 40      | 23,6      | 69      | 49      |
| 19,0      | 40    | 40      | 18,4      | 40    | 40      | 18,9      | 40    | 40      | 17,7      | 69      | 49      |
| 13,1      | 40    | 40      | 12,5      | 40    | 40      | 13,0      | 40    | 40      | 11,8      | 69      | 49      |

## Caratteristiche azionamenti principali - General technical characteristics

| Type         | Cv | Kw   | mt  | speed | m/min | Kg   | m/min | Kg   |
|--------------|----|------|-----|-------|-------|------|-------|------|
| 2,5 T        | 15 | 11   | 155 | ▲     | 5     | 2500 |       |      |
|              |    |      |     | ▲▲    | 20    | 2500 |       |      |
|              |    |      |     | ▲▲▲   | 40    | 1250 |       |      |
| 3 T          | 25 | 18,4 | 115 | ▲     | 7,5   | 3000 |       |      |
|              |    |      |     | ▲▲    | 30    | 3000 |       |      |
|              |    |      |     | ▲▲▲   | 52    | 1500 |       |      |
| 6 T          | 25 | 18,4 | 265 | ▲     | 7,5   | 3000 | 3,7   | 6000 |
|              |    |      |     | ▲▲    | 30    | 3000 | 15    | 6000 |
|              |    |      |     | ▲▲▲   | 60    | 1500 | 30    | 3000 |
| 3 T VF       | 25 | 18,4 | 115 | ▲     | 6     | 3000 |       |      |
|              |    |      |     | ▲▲    | 30    | 3000 |       |      |
|              |    |      |     | ▲▲▲   | 52    | 1750 |       |      |
|              |    |      |     | ▲▲▲▲  | 63    | 1400 |       |      |
| 6 T VF       | 25 | 18,4 | 265 | ▲     | 6     | 3000 | 3     | 6000 |
|              |    |      |     | ▲▲    | 30    | 3000 | 15    | 6000 |
|              |    |      |     | ▲▲▲   | 60    | 1500 | 30    | 3000 |
|              |    |      |     | ▲▲▲▲  | 72    | 1000 | 36    | 2000 |
| 33 HP - 6 VF | 33 | 24,3 | 234 | ▲     | 7,5   | 3000 | 3,7   | 6000 |
|              |    |      |     | ▲▲    | 37,5  | 3000 | 18,5  | 6000 |
|              |    |      |     | ▲▲▲   | 75    | 1500 | 37,5  | 3000 |
|              |    |      |     | ▲▲▲▲  | 90    | 1000 | 45    | 2000 |
| 33 HP - 8 VF | 33 | 24,3 | 450 | ▲     | 5,6   | 4000 | 2,8   | 8000 |
|              |    |      |     | ▲▲    | 28    | 4000 | 14    | 8000 |
|              |    |      |     | ▲▲▲   | 46    | 2440 | 23    | 4880 |
|              |    |      |     | ▲▲▲▲  | 57    | 1938 | 28,5  | 3876 |

| Rotazione - Slewing | giri/min | Kw | cv  |
|---------------------|----------|----|-----|
| ▲                   | 0,37     |    |     |
| ▲▲                  | 0,70     | 5  | 6,8 |
| ▲▲▲                 | 1,00     |    |     |

| Carrello - Trolley | m/min | Kw  | cv  |
|--------------------|-------|-----|-----|
| ▲                  | 15    | 1,1 | 1,5 |
| ▲▲                 | 30    | 2,2 | 3   |
| ▲▲▲                | 60    | 2,2 | 3   |

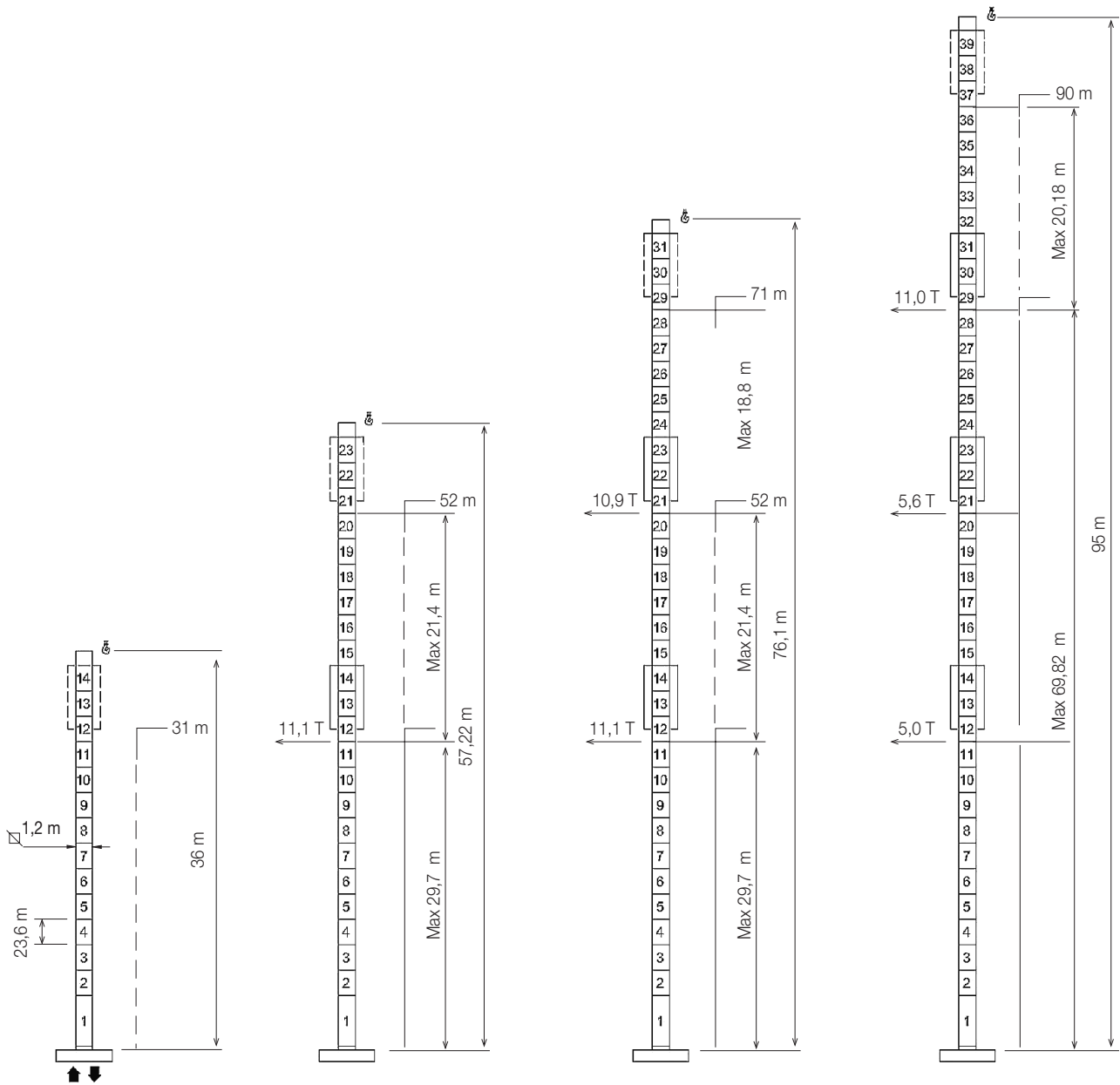
| Traslazione - Rail | m/min | Kw    |
|--------------------|-------|-------|
| ▲                  | 14    | 2x2,9 |

Forza motrice totale - Total installed power

|              |                |                |
|--------------|----------------|----------------|
| 11 Kw (15Hp) | 18,4 Kw (25Hp) | 24,3 Kw (33Hp) |
| 24 Kw        | 32 Kw          | 44 Kw          |

# GRD 55

## Gru a sopralzo idraulico "HC" - External climbing



## Lista dei pesi - Packing list

| Pos. Item            | Pezzi Pieces | Descrizione Description   | Figura Draw | Dimensioni (m.) Dimensions |        |       | Peso (Kg) Weight |       |      |
|----------------------|--------------|---|-------------|----------------------------|--------|-------|------------------|-------|------|
|                      |              |   |             | L                          | W      | H     | Unit.            | Tot.  |      |
| 1                    | 1            | Elemento di freccia<br>Jib element  | N°1         | 6,135                      | 1,280  | 2,060 |                  | 1700  |      |
|                      | 1            |   | N°2         | 6,155                      | 1,150  | 2,060 |                  | 700   |      |
|                      | 1            |   | N°3         | 6,155                      | 1,150  | 2,060 |                  | 580   |      |
|                      | 1            |   | N°4         | 6,155                      | 1,150  | 2,060 |                  | 490   |      |
|                      | 1            |   | N°5         | 6,060                      | 1,150  | 2,030 |                  | 420   |      |
|                      | 1            |   | N°6         | 3,360                      | 1,150  | 1,470 |                  | 110   |      |
|                      | 1            |   | N°7         | 6,060                      | 1,150  | 1,500 |                  | 330   |      |
|                      | 1            |   | N°8         | 6,040                      | 1,150  | 1,500 |                  | 300   |      |
|                      | 1            |   | N°9         | 6,005                      | 1,150  | 1,500 |                  | 265   |      |
|                      | 1            |   | N°10        | 4,785                      | 1,150  | 1,470 |                  | 220   |      |
| <b>Freccia - Jib</b> |              |   |             | <b>55m</b>                 | 55,600 | 1,280 | 2,200            |       | 6030 |
|                      |              |   |             | <b>50m</b>                 | 50,800 | 1,280 | 2,200            |       | 5810 |
|                      |              |   |             | <b>44m</b>                 | 44,900 | 1,280 | 2,200            |       | 5590 |
|                      |              |   |             | <b>38m</b>                 | 39,000 | 1,280 | 2,200            |       | 5325 |
|                      |              |   |             | <b>32m</b>                 | 33,200 | 1,280 | 2,200            |       | 5025 |
|                      |              |   |             | <b>29m</b>                 | 29,900 | 1,280 | 2,200            |       | 4805 |
| 2                    | 1            | Controfreccia girevole, argano sollevamento, quadro elettrico, cuspidi.<br>Counterjib tournable, hoisting winch, trolley jib, electrical bx, a frame. |             | 5,085                      | 1,700  | 2,650 |                  | 5600  |      |
|                      | 1            | Elemento controfreccia esterno.<br>External counterjib.   |             | 6,715                      | 1,435  | 1,470 |                  | 1700  |      |
| 3                    | 6            | Blocchi di contrappeso.<br>Counterweight block.   | A125        | 3000                       | 0,185  | 1,200 | 1250             | 7500  |      |
|                      | 4            |   | B250        | 3000                       | 0,370  | 1,200 | 2500             | 10000 |      |
| 4                    | 1            | Elemento di torre<br>Tower element  |             | 11,800                     | 1,200  | 1,380 |                  | 3050  |      |
|                      | 1            |   |             | 5,800                      | 1,200  | 1,380 |                  | 1610  |      |
|                      | 1            |   |             | 2,950                      | 1,200  | 1,380 |                  | 810   |      |
| 5                    | 1            | Trave principale di base.<br>Base main beam.  |             | 5,530                      | 0,670  | 0,640 |                  | 1480  |      |
|                      | 2            | Semitrave di base.<br>Half base beam.   |             | 5,530                      | 0,670  | 0,640 | 740              | 1480  |      |
| 6                    | 2            | Bilancino di traslazione folle<br>Driven boige  |             | 0,800                      | 0,195  | 0,385 | 190              | 380   |      |
| 7                    | 2            | Bilancino di traslazione motoriz.<br>Driving boige  |             | 0,925                      | 0,425  | 0,385 | 310              | 620   |      |
| 8                    | 12           | Blocco di zavorra<br>Base ballast block (B30-12)  |             | 3,000                      | 0,600  | 1200  | 4950             | 59400 |      |



# **RDLIFT**

**RDLIFT srl**

Via Emilia San Pietro, 25  
42100 Reggio Emilia - Italy

Tel. +39 0522 448511 - Fax +39 0522 448540  
commerciale@rdlift.com

**www.rdlift.com**

Dati illustrativi non impegnativi  
con riserva di modifica senza  
preavviso.

Specifications and data not  
binding subject to modification without  
notice.

Angaben und Beschreibung  
unverbindlich andreungen  
vorbehalten ohne weitere mitteilung.

Données techniques seulement  
indicatives modifications réservées  
sans préavis

Agente - Dealer