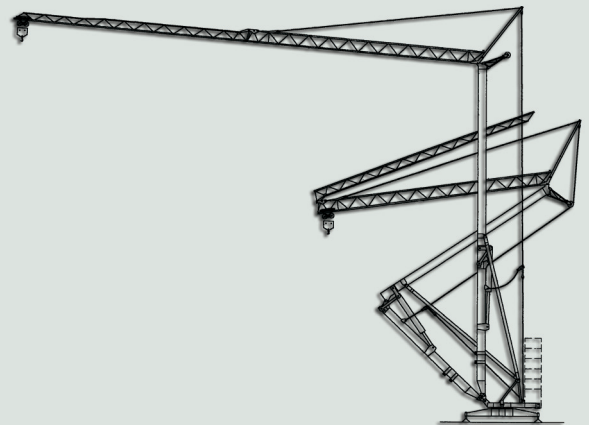


HRD 25 80

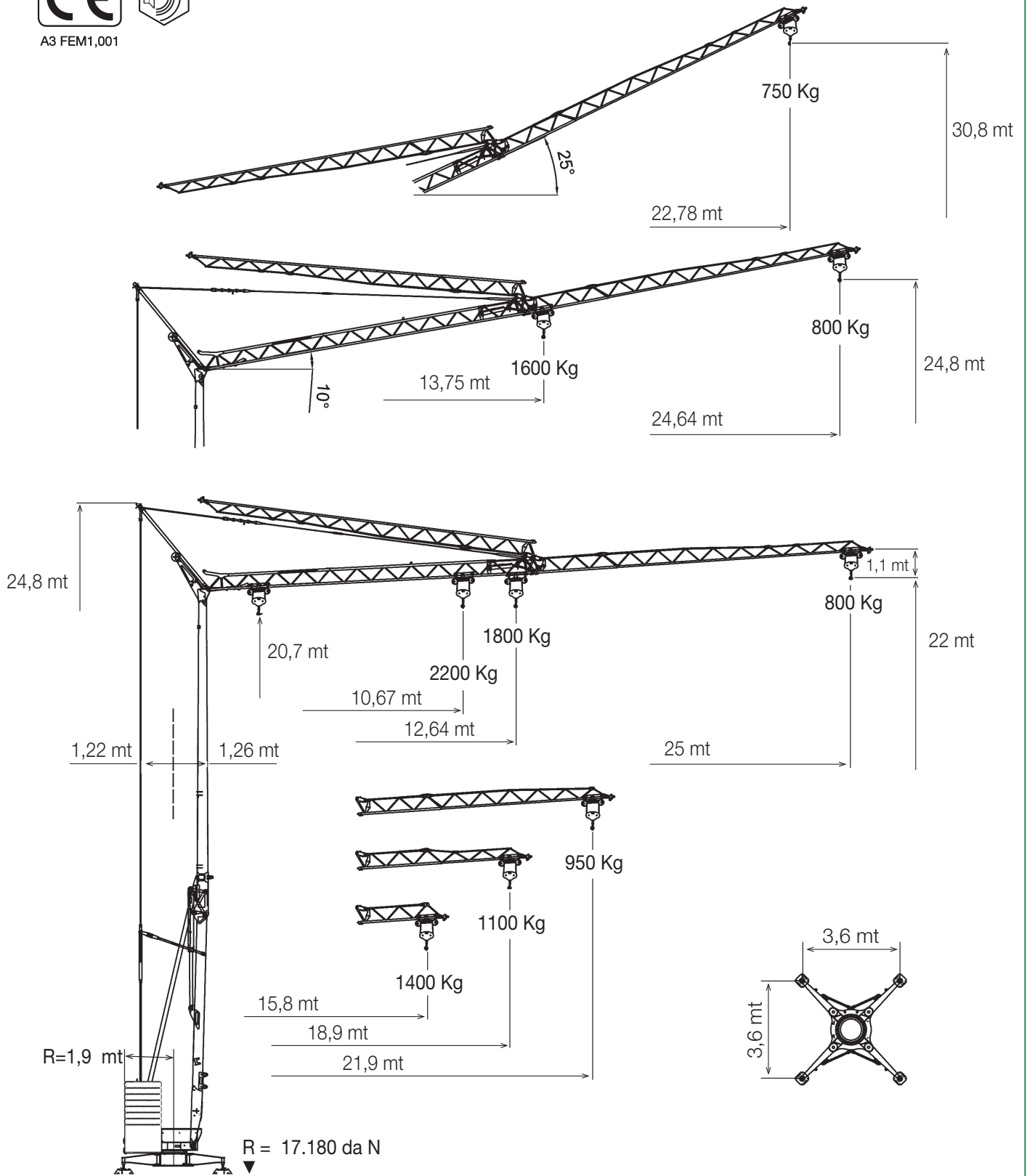
*Gru automontante
Self erecting crane
Schenllmontage kran
Grue montage rapide*



RDLIFT



A3 FEM1,001

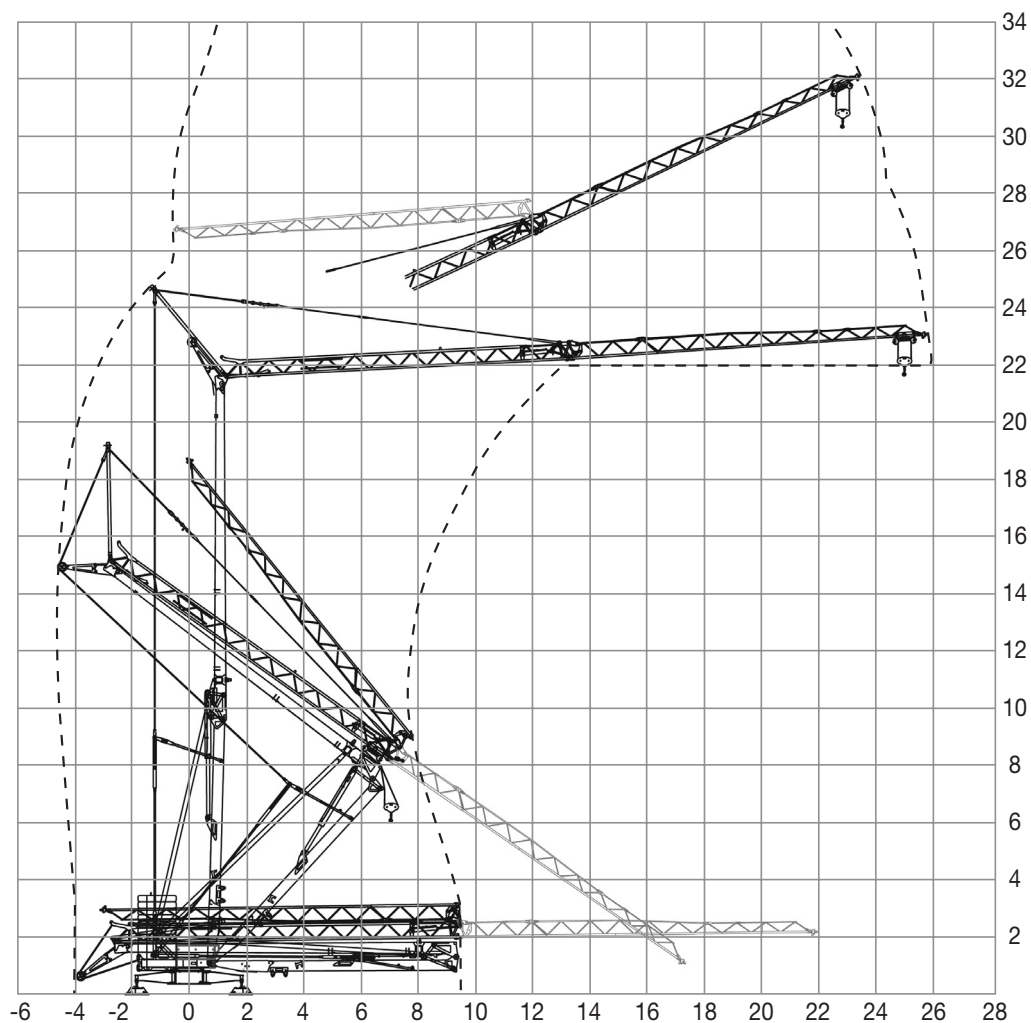


Curve di carico - Load curves



mt	10,67	13	15	17	19	21	23	25
Kg	2200	1738	1468	1266	1110	986	884	800

Ingombro in montaggio - Space requirement











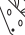

Pesi - Weight



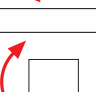


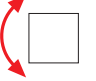



Peso della gru senza assali
 Dead weight without axles **8.900 Kg**

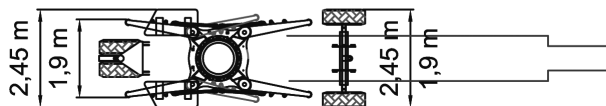
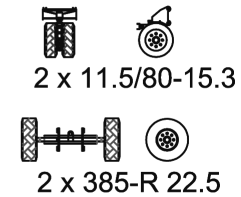
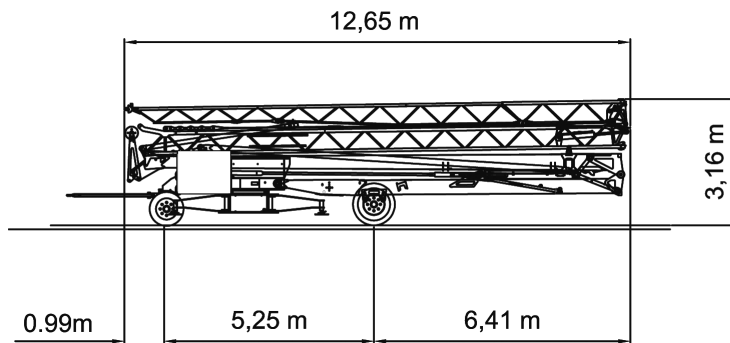


5.200 Kg
 +
9.100 Kg

Velocità - Speed

	 50 Hz	Kw				
			m/min 5	m/min 15	m/min 22	m/min 42
	220 V	3	kg 2200	Kg ↑1300 ↓2200	Kg ↑750 ↓1000	Kg ↑300 ↓800
	220 V	4,5	kg 2200	Kg ↑1750 ↓2200	Kg ↑800 ↓1000	Kg ↑500 ↓800
	220 V	6	kg 2200	Kg 2200	Kg 1000	Kg 800
	380 V	8	kg 2200	Kg 2200	Kg 1000	Kg 800

		m/min	Kw	cv
		17,8		
		28,6	3	4
		39/53,5		
		0,18	1,5	2
		0,45		
		0,90		

Trasporto - Transport**RDLIFT****RDLIFT srl**

Via Emilia San Pietro, 25

42100 Reggio Emilia - Italy

Tel. +39 0522 448511 - Fax +39 0522 448540

commerciale@rdlift.com

www.rdlift.com

Dati illustrativi non impegnativi
con riserva di modifica senza
preavviso.

Specifications and data not
binding subject to modification without
notice.

Angaben und Beschreibung
unverbindlich andreungen
vorbehalten ohne weitere mitteilung.

Données techniques seulement
indicatives modifications réservées
sans préavis

Agente - Dealer