





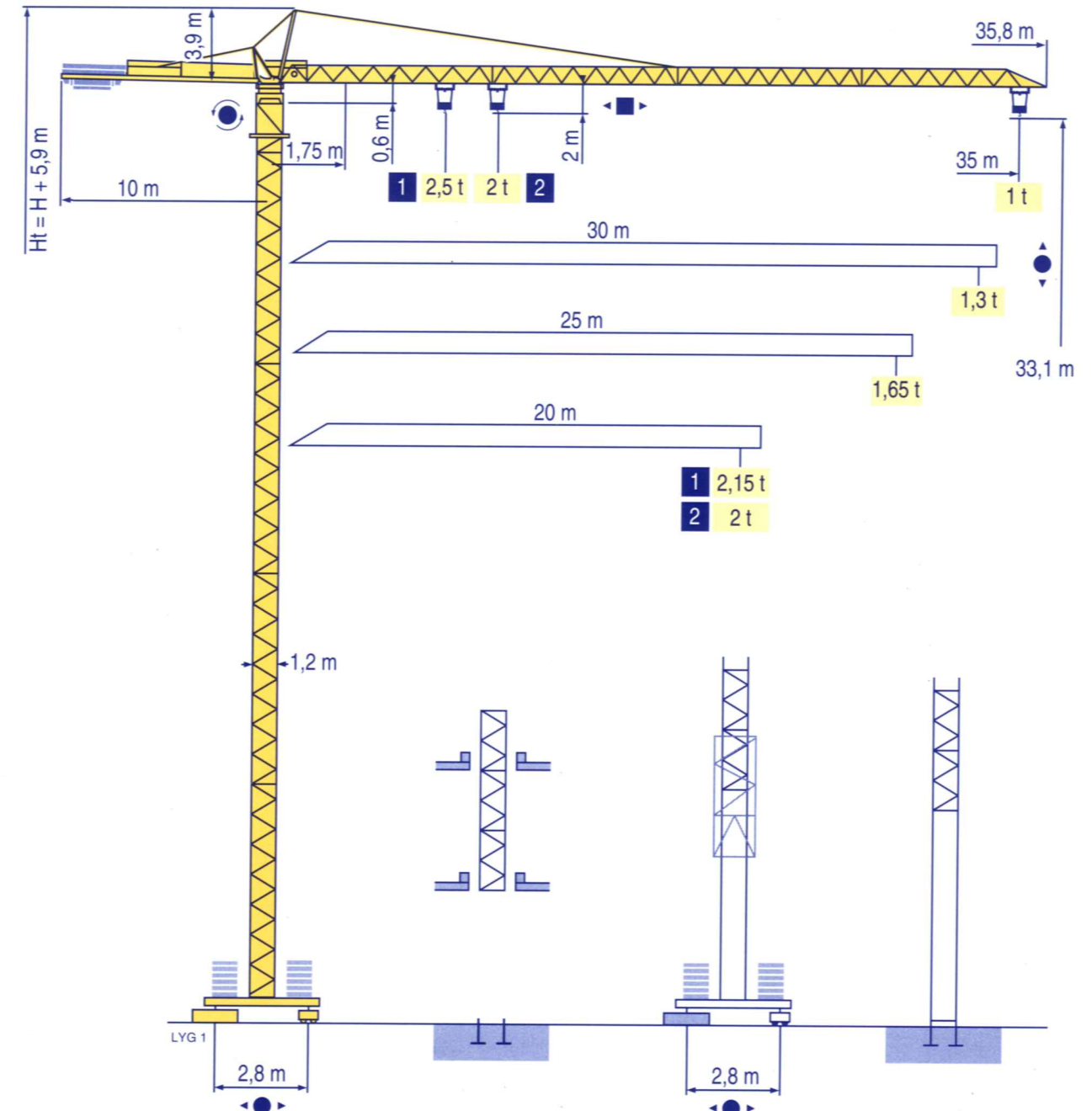


MC 48 B

Mécanismes
Antriebe
Mechanisms
Mecanismos
Meccanismi
Mecanismos

						ch - PS hp	kW	
▲	9 RPC 10-3	m/min	6,6	20	40	8,2	6	115 m
	t	2	2	1				
▼	15 PC 10-2	m/min	7,5	22	45	15	11	229 m
	t	2	2	1				
↕	15 PC 13-5	m/min	7,1	21	42	15	11	130 m
	t	2,5	2,5	1,3				
◀ ▶	1 D2 V1	m/min	18 - 36			1,2	0,9	
⊙	RCV 30	tr/min U/min rpm	0 → 0,8			4	3	
⊞	TVD 324	m/min	26			2 x 4	2 x 2,9	
CEI 38 		IEC 38		kVA				
400 V (+6% -10%) 50 Hz		9 PC : 15 kVA 15 PC : 20 kVA		2000/14				

LYG 1



F

Levage
Distribution
Orientation
Translation
Conforme aux directives CEE sur le niveau acoustique

D

Heben
Katzfahren
Schwenken
Kranfahren
Gemäss EWG-Richtlinien für den Schall-Leistungspegel

GB

Hoisting
Trolleying
Slewing
Travelling
In compliance with the EEC Instructions on noise level

E

Elevación
Distribución
Orientación
Traslación
Conforme con las directivas CEE sobre el nivel acústico

I

Sollevamento
Distribuzione
Rotazione
Traslazione
Conforme alle direttive CEE sul livello acustico

P

Elevação
Distribuição
Rotação
Translação
Conforme as directivas CEE sobre o nível acústico



Document commercial non contractuel. Pour toute information technique se référer à la notice correspondante

Unverbindliches Vertriebsdokument. Für technische Informationen, siehe die entsprechenden Anweisungen.

This commercial document is not legally binding. For any technical information, please refer to the corresponding instructions.

Documento comercial no contractual. Para cualquier información técnica, ver la noticia correspondiente.

Documento commerciale non vincolante. per tutte le informazioni tecniche fare riferimento al catalogo istruzioni

Documento comercial não contractual. Para qualquer informação técnica complementar consultar as respectivas instruções

Manitowoc
Crane CARE

POTAIN 
Manitowoc Crane Group

18, rue de Charbonnières - B.P.173
69132 ECULLY Cedex - France
Tél. : (33) 4 72 18 20 20
Fax. : (33) 4 72 18 20 00
www.manitowoccrane.com www.potain.com



Americas
Tel: +1 920 683 6322
Tel: +1 717 597 8121

Europe - Middle East - Africa
Tel: +(33) 4 72 81 50 00
Tel: +(44) 191 565 6281

Asia - Pacific
Tel: +(65) 6861 7133
Fax: +(65) 6862 4142

www.manitowoccrane.com

CITY CRANE MC 48 B

Ref. 2003 48 LYG 1

Copyright.Reproduction interdite © POTAIN 2003

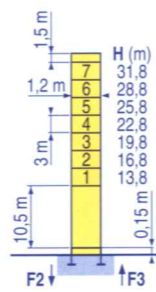
Réalisation HeadLines

Manitowoc
Crane Group

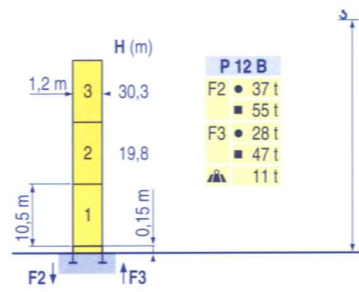
CITY CRANE

CE FEM 1.001-A3

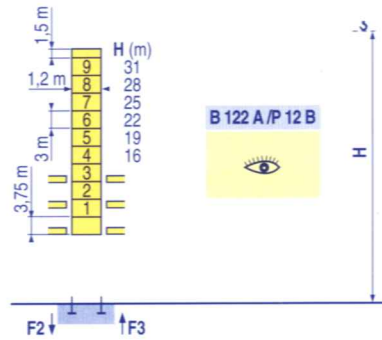
Mat / Réactions \square 1,2 m
 Maste /
 Eckdrücke 20 m = 35 m
 Masts /
 Reactions
 Mástil /
 Reacciones
 Torre / Reazioni
 Tramo /
 Reações



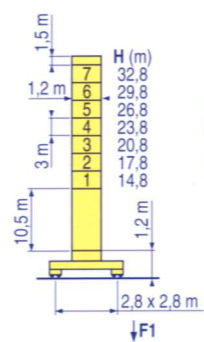
P 12 B
 F2 • 41 t
 ■ 66 t
 F3 • 30 t
 ■ 57 t
 ▲ 14 t



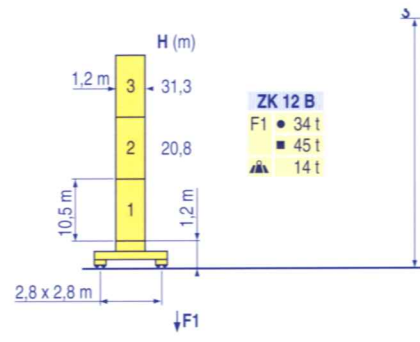
P 12 B
 F2 • 37 t
 ■ 55 t
 F3 • 28 t
 ■ 47 t
 ▲ 11 t



B 122 A / P 12 B



ZK 12 B
 F1 • 37 t
 ■ 54 t
 ▲ 17 t



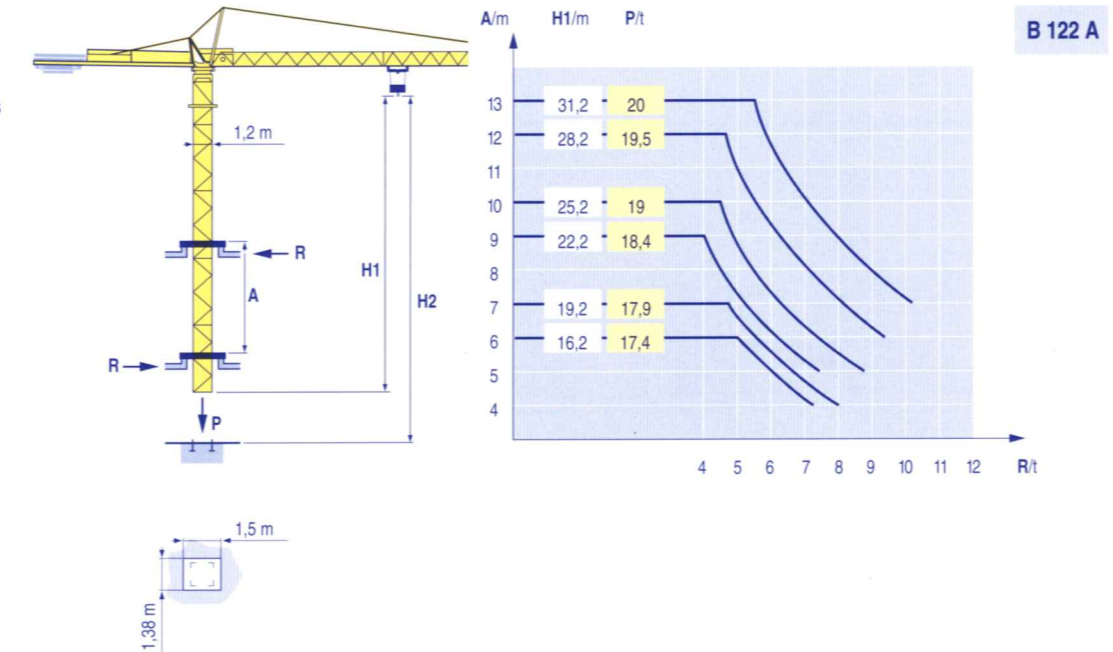
ZK 12 B
 F1 • 34 t
 ■ 45 t
 ▲ 14 t



Courbes de charges
 Lastkurven
 Load diagrams
 Curvas de cargas
 Curve di carico
 Curva de cargas

Height (m)	Reaction	1,75	16,4	19,8	20	22	25	27	30	32	35	Unit
35 m	F2	2,5	-	1,98	1,77	1,52	1,38	1,22	1,12	1	1	t
	F3	2	-	1,77	1,52	1,38	1,22	1,12	1	1	1	t
30 m	F2	2,5	2,1	-	1,89	1,62	1,48	1,3				t
	F3	2	1,89	1,62	1,48	1,3						t
25 m	F2	2,5	2,15	-	1,92	1,65						t
	F3	2	1,92	1,65								t
20 m	F2	2,5	2,15									t
	F3	2										t

Télescopage sur dalles
 Kletterkrane im Gebäude
 Climbing crane
 Telescopage gruas trepadoras
 Gru in cavedio
 Telescopagem sobre lages



CITY CRANE MC 48 B



CITY CRANE MC 48 B



Symbol	F	D	GB	E	I	P
●	Réactions en service	Reaktionskräfte in Betrieb	Reactions in service	Reacciones en servicio	Reazioni in servizio	Reações em serviço
■	Réactions hors service	Reaktionskräfte außer Betrieb	Reactions out of service	Reacciones fuera de servicio	Reazioni fuori servizio	Reações fora de serviço
▲	A vide sans lest (ni train de transport) avec flèche et hauteur maximum.	Ohne Last, Ballast (und Transportachse), mit Maximalausleger und Maximalhöhe.	Without load, ballast (or transport axes), with maximum jib and maximum height.	Sin carga, sin lastre, (ni tren de transporte), flecha y altura máxima.	A vuoto, senza zavorra (ne assali di trasporto) con braccio massimo e altezza massima.	Sem carga (nem trem de transporte)- sem lastro com lança e altura máximas.

Symbol	F	D	GB	E	I	P
A	Distance entre cadres	Abstand zwischen den Rahmen	Distance between collars	Distancia entra marcos	Distanza fra i telai	Distância entre quadros
H1	Hauteur grue	Kranhöhe	Crane height	Altura grúa	Altezza gru	Altura da grua
P	Poids de la grue(en service)	Krangewicht (in Betrieb)	Crane weight (in service)	Peso de la grúa (en servicio)	Peso della gru (in servizio)	Peso da grua (em serviço)
R	Réaction horizontale	Horizontalkräfte	Horizontal reaction	Reaccion horizontal	Reazione orizzontale	Reacção horizontal
👁	Voir télescopage sur dalles	Siehe Kletterkrane im Gebäude	See climbing crane	Veja grua trepadora	Consultare gru in cavedio	Ver telescopagem sobre lages