

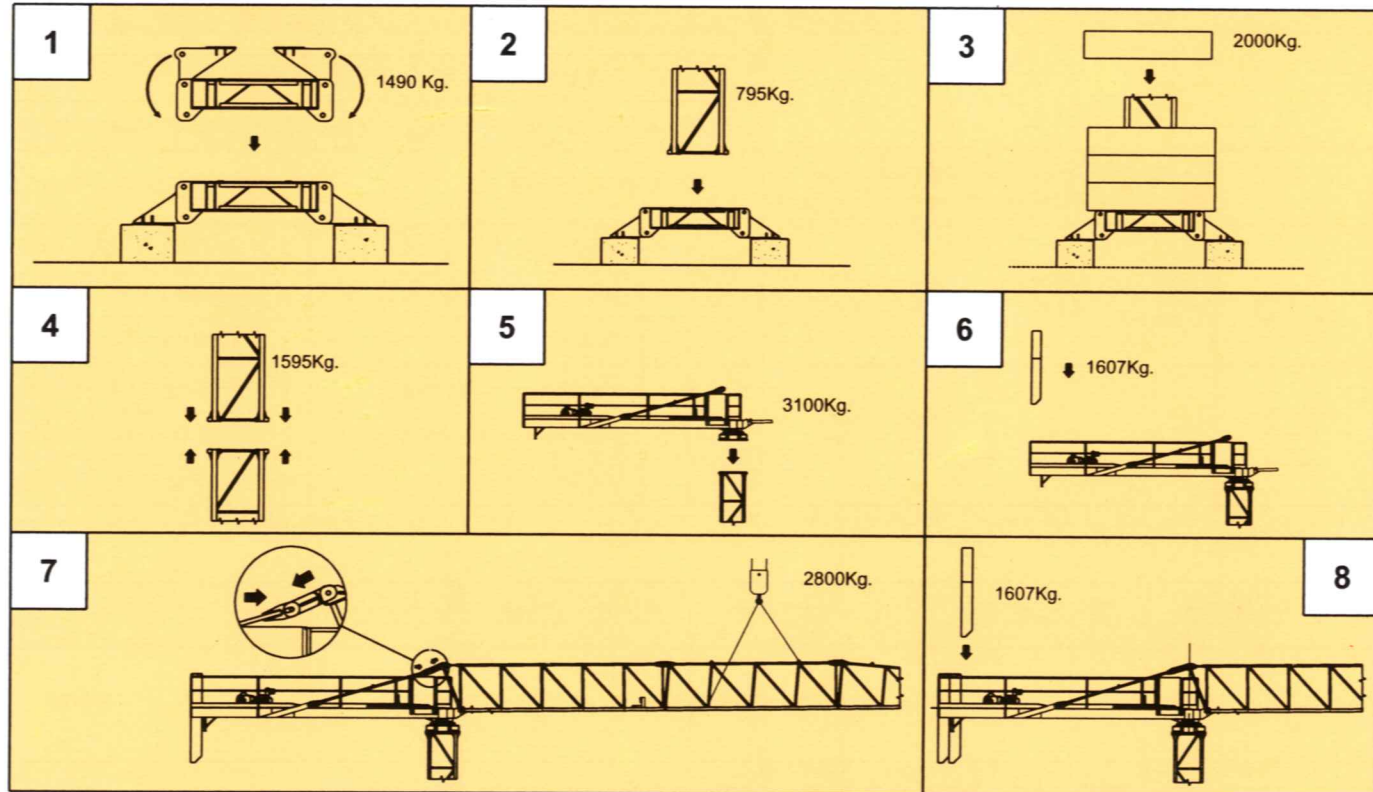


PIANO DI CARICO PER GRU CON 36m DI BRACCIO, 24m DI ALTEZZA SU BASE FISSA, ZAVORRA E CONTRAPPESI  
LOADING PLAN FOR 36m JIB, 24m H.U.H, CROSSBASE WITH BALLAST AND COUNTERWEIGHTS

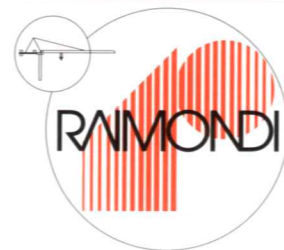
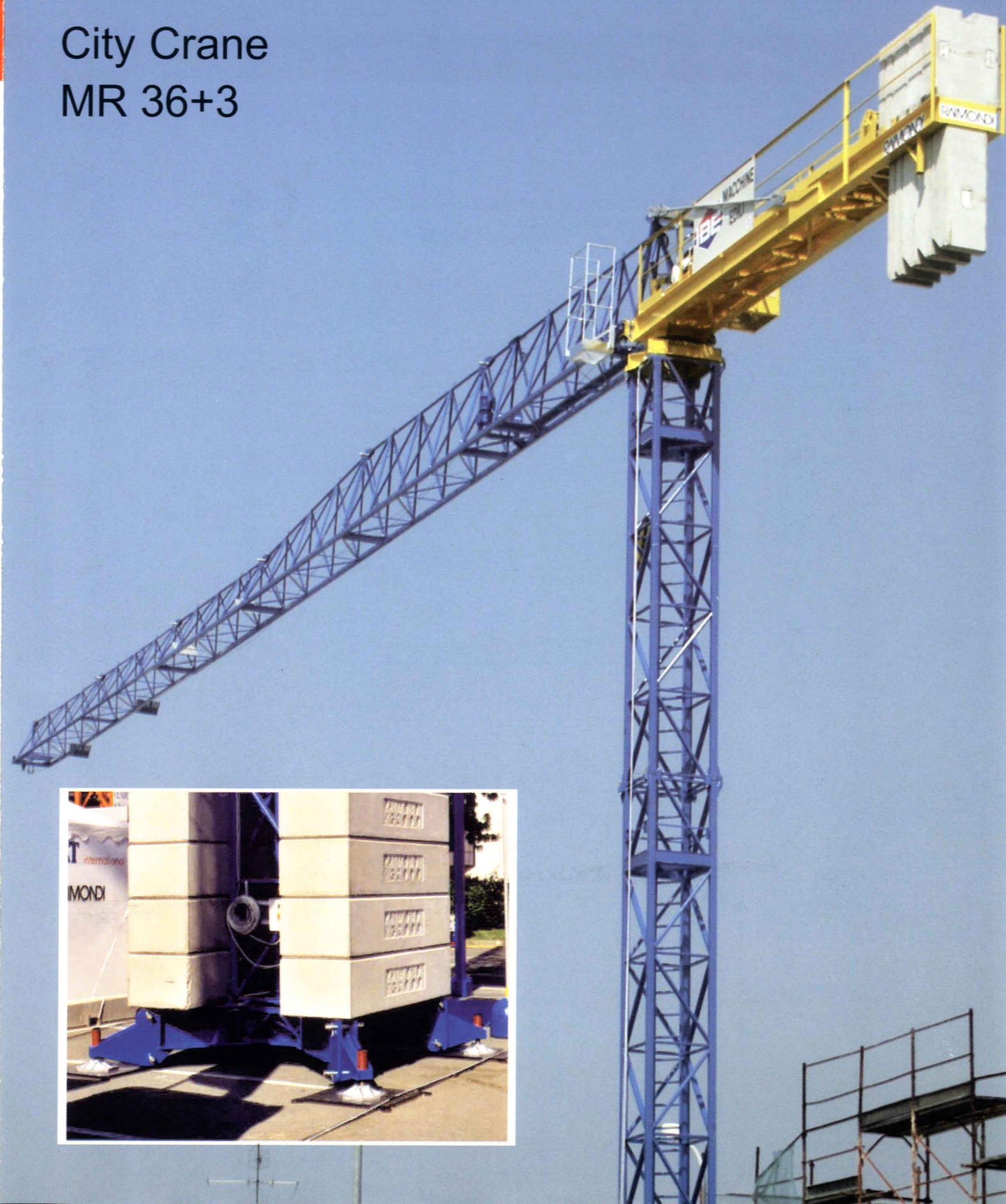
MR 36+3 4

A	Elementi braccio N°1-2-3, N°2 elementi torre 11,8m - 12 bl. zavorra
	Jib elements N°1-2-3, N°2 tower elements 11,8m length, N°12 ballast blocks
	N°12 blocs lest de base, N°2 elèment de mature 11,8m , elèment de flechè N°1-2-3
	N°12 Grundballastblocken, 24 m Turmstück, Ausleger 1-2-3.
B	Blocchi di contrappeso, controfreccia, base completa, elementi freccia N°4-5-6, N°2 blocchi di zavorra
	Counterweight blocks, counterjib, complete base, jib elements N°4-5-6, N°2 ballast blocks.
	Blocs de contrepoids, contrefleche, chassis de base, elèment de flechè N°4-5-6, N°2 blocs lest de base.
	Gegenwichtbloëcke, Gegenausleger, Kreuzgelenk, Ausleger N°4-5-6, N°2 Grundballastblocken.
A	
B	

SEQUENZA DI MONTAGGIO  
ASSEMBLING SEQUENCE  
SEQUENCE DE MONTAGE  
AUFSTELLUNG SEQUENZ



## City Crane MR 36+3



CARLO RAIMONDI FU R. SPA

Corso Garibaldi, 253  
20025 Legnano - Italy  
Tel. 0331 / 548061-450239  
Fax 0331 / 450400  
E-MAIL - info@raimondigr.it

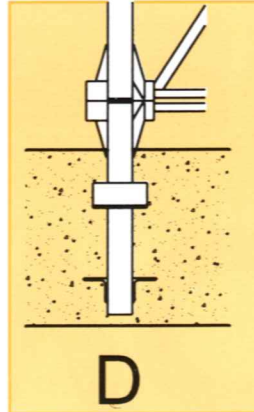
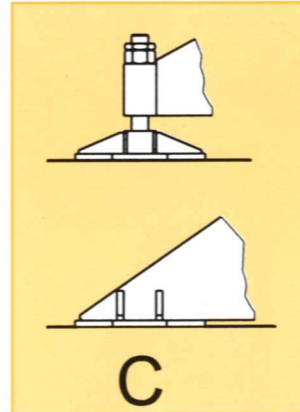
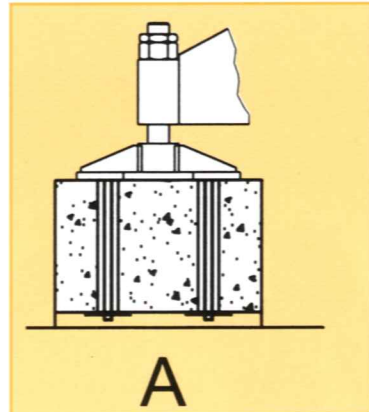
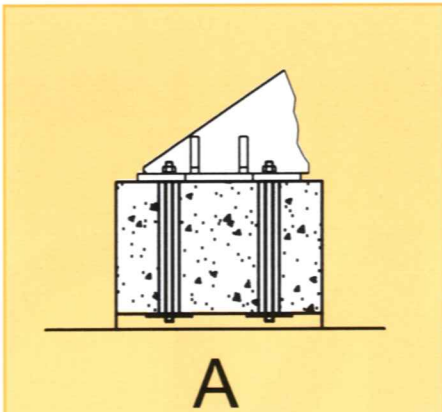
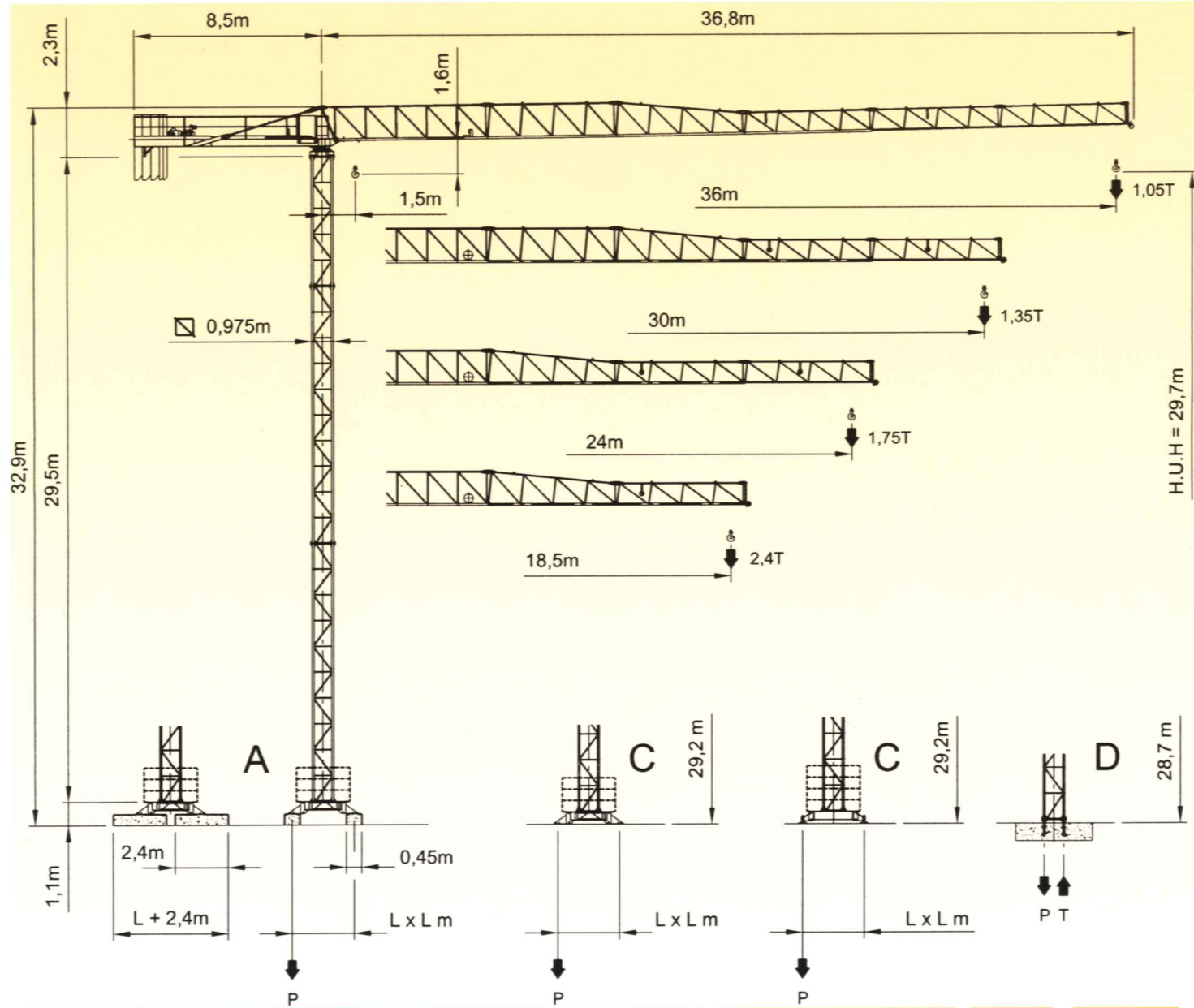
# RAIMONDI





City Crane  
MR 36+3E

GRU A TORRE A MONTAGGIO RAPIDO  
«CITY TOWER CRANE»  
GRUE A TOUR A MONTAGE RAPIDE



RAGGI E PORTATE  
RADIUS AND S.W.L.  
PORTEE ET CHARGE UTILE  
AUSLADUNG UND TRAGFAHIGKEIT

MR 36+3 3

Portata max / Max s.w.l. Charge maxi / Max. Tragfähigkeit	2000 kg.				4000 kg.				
	18	24	30	36	18	24	30	36	
Braccio / Jib Ausleger / Flèche m.	18	24	30	36	18	24	30	36	
Campo di portata max da Max s.w.l. range from Charge maxi de Max. Tragfähigkeit von 1,5 m	a to à bis	18,0	20,5	20,4	20,0	11,0	11,0	10,9	10,7
Raggi (m.) Radii (m.) Portée (m.) Ausladung (m.)	6	2000	2000	2000	2000	4000	4000	4000	4000
	8	2000	2000	2000	2000	4000	4000	4000	4000
	10	2000	2000	2000	2000	4000	4000	4000	4000
	12	2000	2000	2000	2000	3732	3729	3687	3534
	14	2000	2000	2000	2000	3155	3153	3117	2987
	16	2000	2000	2000	2000	2729	2727	2695	2582
	18	2000	2000	2000	2000	2400	2398	2371	2271
	20		2000	2000	2000		2138	2113	2023
	22		1926	1903	1822		1876	1853	1772
	24		1750	1729	1655		1700	1679	1605
	26			1583	1515			1533	1465
	28			1458	1395			1408	1345
	30			1350	1291			1300	1241
32				1200				1150	
34				1121				1071	
36				1050				1000	

	Velocità-Speed Vitesse-Geschwindigkeit		Potenza-Power Puissance-Leistung	
	0,3 0,6 1,0	giri/min r.p.m.	4,2 3,0	HP KW
	20/40	m/min	1,5/3 1,1/2,2	HP KW

Argano - Hoisting winch - Treuil - Hubwerk					
Portata/Velocità - Load/Speed-Charge/Vitesse - Tragfähigkeit/Geschwindigkeit					
10 HP - 7,35 KW			15 HP - 11 KW		
	1	2000 Kg - 4,5 m/min		1	2000 Kg - 6,25 m/min
	2	2000 Kg - 18 m/min		2	2000 Kg - 25 m/min
	3	1000 Kg - 36 m/min		3	1000 Kg - 50 m/min
	1	4000 kg - 2,25 m/min		1	4000 kg - 3,1 m/min
	2	4000 kg - 9,0 m/min		2	4000 kg - 12,5 m/min
	3	2000 kg - 18 m/min		3	2000 kg - 25 m/min

Conforme alla direttiva 2000/14/CE sul livello acustico - In compliance with the 2000/14/CE instruction on noise level - Conforme à directive 2000/14/CE sur le niveau acoustique  
Gemäss 2000/14/CE über Schall - Leistungspegel - Conforme con la direttiva 2000/14/CE sobre el nivel acustico.

A - L=3,2m			A - L=2,8m			C - L=3,2m			C - L=2,8m			D		
H (m.)	Z (t.)	P (KN)	H (m.)	Z (t.)	P (KN)	H (m.)	Z (t.)	P (KN)	H (m.)	Z (t.)	P (KN)	H	T (KN)	P (KN)
29,7	28	223	29,7	32	253	29,2	28	222	29,2	32	253	28,7	374	464
23,8	24	198	23,8	28	223	23,3	24	197	23,3	28	223	22,8	288	372
17,9	24	186	17,9	24	198	17,4	24	185	17,4	24	198	16,9	247	327