



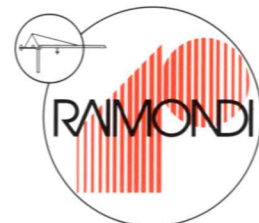
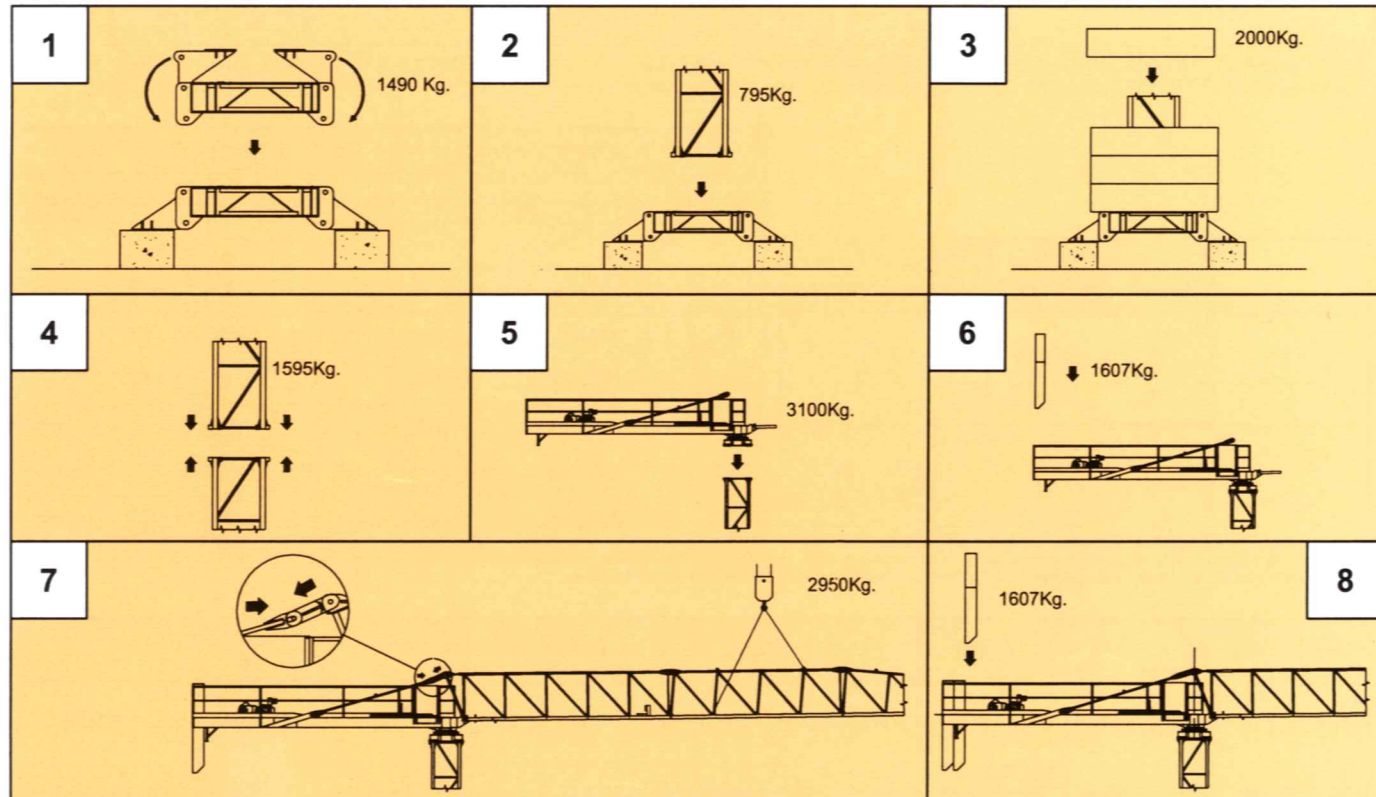
City Crane MR 39+3

PIANO DI CARICO PER GRU CON 36m DI BRACCIO, 24m DI ALTEZZA SU BASE FISSA, ZAVORRA E CONTRAPPESI
LOADING PLAN FOR 36m JIB, 24m H.U.H, CROSSBASE WITH BALLAST AND COUNTERWEIGHTS

MR 39+3 4

A	Elementi braccio N°1-2-3, N°2 elementi torre 11,8m - 12 bl. zavorra
	Jib elements N°1-2-3, N°2 tower elements 11,8m length, N°12 ballast blocks
	N°12 blocs lest de base, N°2 elèment de mature 11,8m , element de flechè N°1-2-3
	N°12 Grundballastblocken, 24 m Turmstück, Ausleger 1-2-3.
B	Blocchi di contrappeso, controfreccia, base completa, elementi freccia N°4-5-6-7, N°2 blocchi di zavorra
	Counterweight blocks, counterjib, complete base, jib elements N°4-5-6-7, N°2 ballast blocks.
	Blocs de contrepoids, contrefleche, chassis de base, elèment de flechè N°4-5-6-7, N°2 blocs lest de base.
	Gegenwichtblocke, Gegenausleger, Kreuzgelenk, Ausleger N°4-5-6-7, N°2 Grundballastblocken.
A	
B	

SEQUENZA DI MONTAGGIO
ASSEMBLING SEQUENCE
SEQUENCE DE MONTAGE
AUFSTELLUNG SEQUENZ



CARLO RAIMONDI FU R. SPA

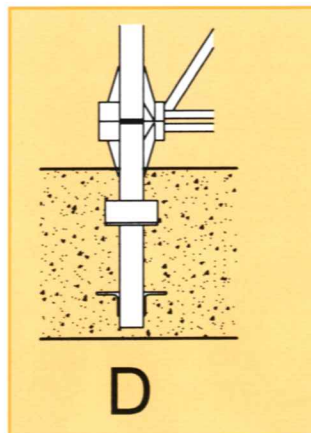
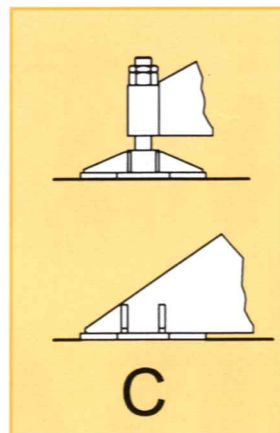
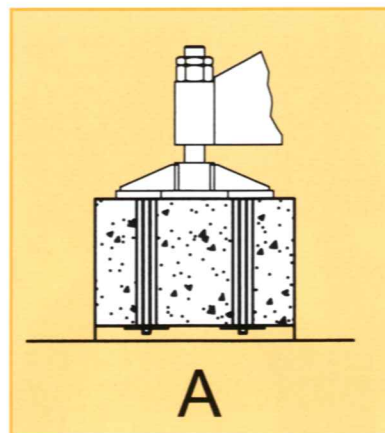
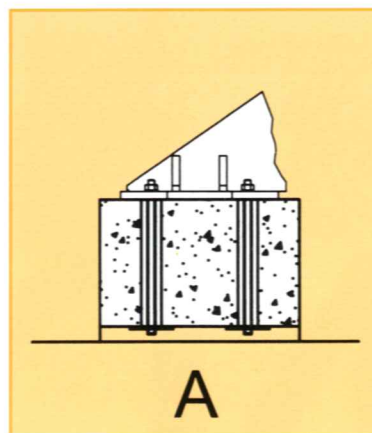
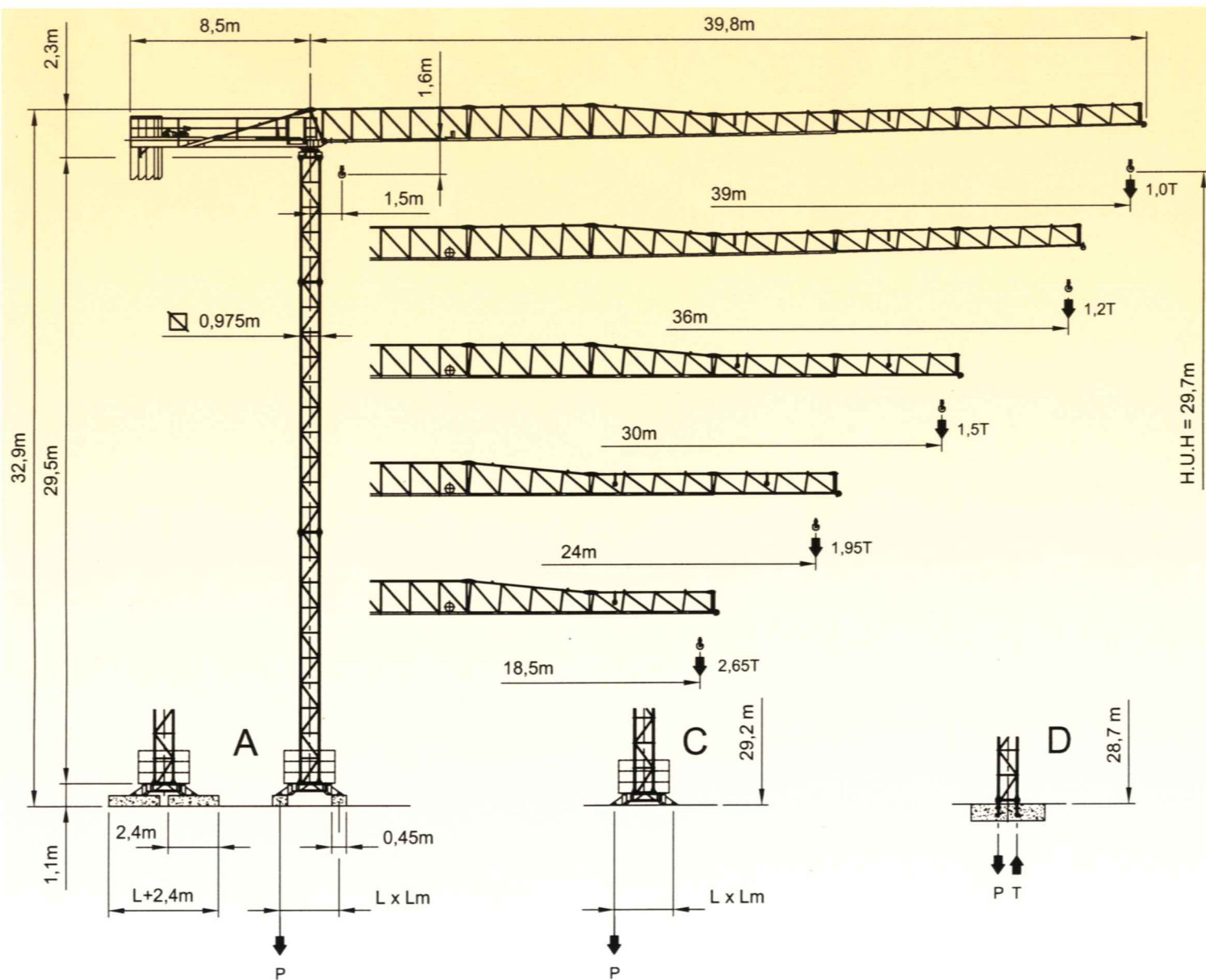
Corso Garibaldi, 253
20025 Legnano - Italy
Tel. 0331 / 548061-450239
Fax 0331 / 450400
E-MAIL - info@raimondigru.it

RAIMONDI



City Crane MR 39+3

GRU A TORRE A MONTAGGIO RAPIDO
«CITY TOWER CRANE»
GRUE A TOUR A MONTAGE RAPIDE



RAGGI E PORTATE
RADIUS AND S.W.L.
PORTEE ET CHARGE UTILE
AUSLADUNG UND TRAGFAHIGKEIT

Portata max / Max s.w.l. Charge maxi / Max. Tragfähigkeit	2000 kg.					4000 kg.				
	18	24	30	36	39	18	24	30	36	39
Braccio / Jib Ausleger / Flèche	m.									
Campo di portata max da Max s.w.l. range from Charge maxi de Max. Tragfähigkeit von	a to à bis									
	18,0	23,5	23,1	22,7	21,0	12,3	12,1	11,8	11,6	10,6
Raggi (m.)	8	10	12	14	16	18	20	22	24	26
Radii (m.)	2000	2000	2000	2000	2000	2000	2000	2000	2000	2000
Portée (m.)	2000	2000	2000	2000	2000	4000	4000	4000	4000	4000
Ausladung (m.)	2000	2000	2000	2000	2000	4000	4000	4000	4000	4000
	39m	36m	30m	24m	18,5m	39m	36m	30m	24m	18,5m
	1,0T	1,2T	1,5T	1,95T	2,65T	1,0T	1,2T	1,5T	1,95T	2,65T

Con sistema "ULTRALIFT" tutte le portate intermedie sono aumentate del 10% - All intermediate loads are increased of 10% if the crane is equipped with "ULTRALIFT" control - Les charges intermédiaires sont augmentées de 10% si la grue est équipée avec controle "ULTRALIFT"

		Argano - Hoisting winch - Treuil - Hubwerk									
		Portata/Velocità - Load/Speed-Charge/Vitesse - Tragfähigkeit/Geschwindigkeit									
		10 HP - 7,35 KW			15 HP - 11 KW						
	Velocità-Speed Vitesse-Geschwindigkeit	0,3	giri/min r.p.m.	Potenza-Power Puissance-Leistung	4,2 HP 3,0 KW		1	2000 Kg - 4,5 m/min		1	2000 Kg - 6,25 m/min
		0,6					2	2000 Kg - 18 m/min		2	2000 Kg - 25 m/min
		1,0					3	1000 Kg - 36 m/min		3	1000 Kg - 50 m/min
	20/40	m/min	1,5/3 HP 1,1/2,2 KW			1	4000 kg. - 2,25 m/min		1	4000 kg. - 3,1 m/min	
						2	4000 kg. - 9,0 m/min		2	4000 kg. - 12,5 m/min	
						3	2000 kg. - 18 m/min		3	2000 kg. - 25 m/min	

Conforme alla direttiva 2000/14/CE sul livello acustico - In compliance with the 2000/14/CE instruction on noise level - Conforme à directive 2000/14/CE sur le niveau acoustique
Gemäss 2000/14/CE über Schall - Leistungspegel - Conforme con la direttiva 2000/14/CE sobre el nivel acustico.

A - L=3,2m			A - L=2,8m			C - L=3,2m			C - L=2,8m			D		
H (m.)	Z (t.)	P (KN)	H (m.)	Z (t.)	P (KN)	H (m.)	Z (t.)	P (KN)	H (m.)	Z (t.)	P (KN)	H	T (KN)	P (KN)
29,7	28	234	29,7	32	268	29,2	28	233	29,2	32	266	28,7	363	470
23,8	24	208	23,8	28	235	23,3	24	207	23,3	28	234	22,8	315	418
17,9	24	189	17,9	28	216	17,4	24	189	17,4	28	211	16,9	278	375