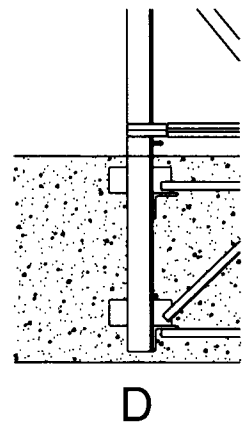
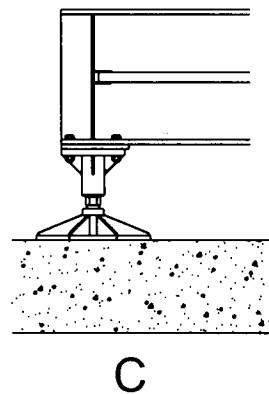
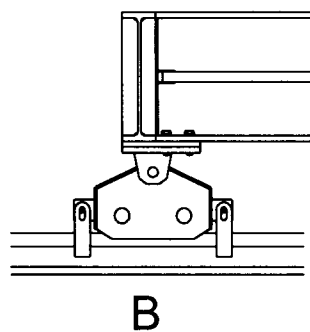
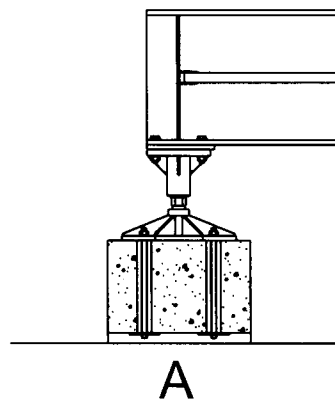
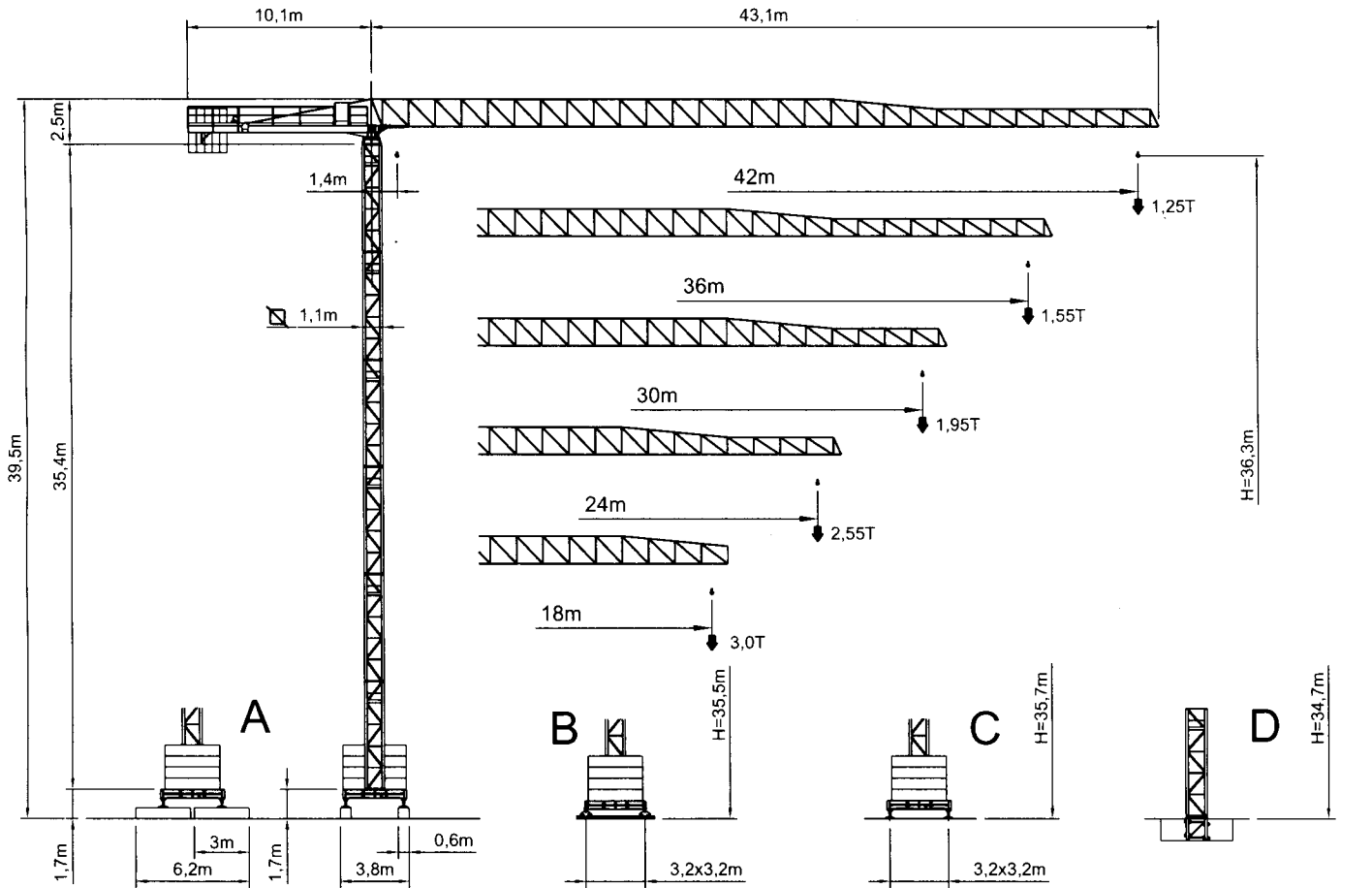
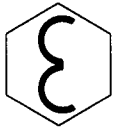
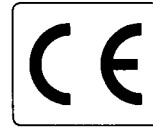




## City Crane MR 45+3

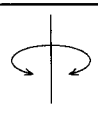
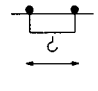
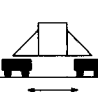
GRU A TORRE A MONTAGGIO RAPIDO  
«CITY TOWER CRANE»






RAGGI E PORTATE  
RADIUS AND S.W.L.  
PORTEE ET CHARGE UTILE  
AUSLADUNG UND TRAGFAHIGKEIT

MR 45+3

Portata max / Max s.w.l. Charge maxi / Max. Tragfähigkeit		2500 kg. 					3000 kg. 				
Braccio / Jib Ausleger / Flèche	m.	18	24	30	36	42	18	24	30	36	42
Campo di portata max da Max s.w.l. range from Charge maxi de Max. Tragfähigkeit von	1,4 m a to à bis	19,3	19,2	19,2	19,2	19,2	18,0	20,7	20,5	19,7	18,9
Raggi (m.) Radii (m.) Portée (m.) Ausladung (m.)	12	2500	2500	2500	2500	2500	3000	3000	3000	3000	3000
	14	2500	2500	2500	2500	2500	3000	3000	3000	3000	3000
	16	2500	2500	2500	2500	2500	3000	3000	3000	3000	3000
	18	2500	2500	2500	2500	2500	3000	3000	3000	3000	3000
	20	2400	2390	2390	2390	2390		3000	3000	2934	2812
	22	2150	2150	2150	2150	2150		2800	2727	2647	2537
	24	1950	1940	1940	1940	1940		2550	2483	2410	2310
	26	1770	1770	1770	1770	1770			2277	2210	2118
	28	1630	1620	1620	1620	1620			2102	2040	1954
	30	1500	1490	1490	1490	1490			1950	1892	1812
	32		1380	1380	1380	1380				1764	1689
	34		1290	1290	1290	1290				1650	1580
	36		1200	1200	1200	1200				1550	1483
38			1130	1130	1130					1397	
40			1060	1060	1060					1320	
42			1000	1000	1000					1250	

	Velocità-Speed Vitesse-Geschwindigkeit	Potenza-Power Puissance-Leistung
	0,37 0,7 1,0 giri/min r.p.m.	5,4 HP 4,0 KW
	20/41,3 m/min	1,5 HP 1,1/2,2 KW
	13 m/min	2 x 4 HP 2 x 2,9 KW

Organo - Hoisting winch - Treuil - Hubwerk			
Portata/Velocità - Load/Speed-Charge/Vitesse - Tragfähigkeit/Geschwindigkeit			
	15 HP (11 KW) 	15 HP (11 KW) 	25 HP (18,4 KW) 
1	2000 kg. / 7 m/min	2500 kg. / 5,2 m/min	3000 kg. / 7,5 m/min
2	2000 kg. / 28 m/min	2500 kg. / 21 m/min	3000 kg. / 30 m/min
3	1000 kg. / 56 m/min	1250 kg. / 42 m/min	1500 kg. / 60 m/min

Conforme alla direttiva CEE 84/534 sul livello acustico - In compliance with the EEC 84/534 instruction on noise level - Conforme à directive CEE 84/534 sur le niveau acoustique  
Gemäss EWG 84/534 über Schall - Leistungspegel - Conforme con la directive CEE 84/534 sobre el nivel acustico.

A				B				C				D				
H	Z	P		H	Z	P		H	Z	P		H	P		T	
m.	t.	i.s. t.	f.s. t.	m.	t.	i.s. t.	f.s. t.	m.	t.	i.s. t.	f.s. t.	m.	i.s. t.	f.s. t.	i.s. t.	f.s. t.
36,3	60,4	42,7	57,3	35,5	60,6	41,9	54,9	35,7	60,6	42,1	55,7	34,7	81,5	97,9	70,5	86,1
30,4	45,2	37,0	38,8	29,6	45,5	36,4	36,9	29,8	45,5	36,6	37,5	28,8	70,7	65,8	60,3	54,6
24,5	40,2	32,5	27,5	23,7	40,4	32,0	27,0	23,9	40,4	32,2	27,0	22,9	62,1	39,7	52,2	29,2
18,6	40,2	29,1	18,8	17,8	35,4	28,4	19,1	18,0	35,4	28,6	18,9	17,0	55,4	21,6	46,2	11,7
12,7	40,2	27,4	17,7	11,9	30,3	25,7	17,4	12,1	30,4	25,8	17,1	11,1	50,3	21,0	41,7	11,7