

CARLO RAIMONDI



Tower Crane

City Crane **MR66**

Luffing Jib Crane

MR66

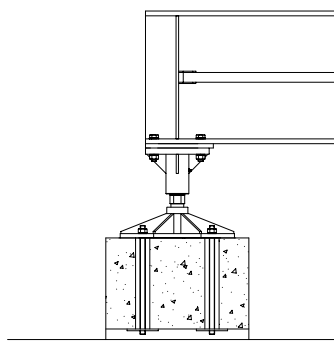
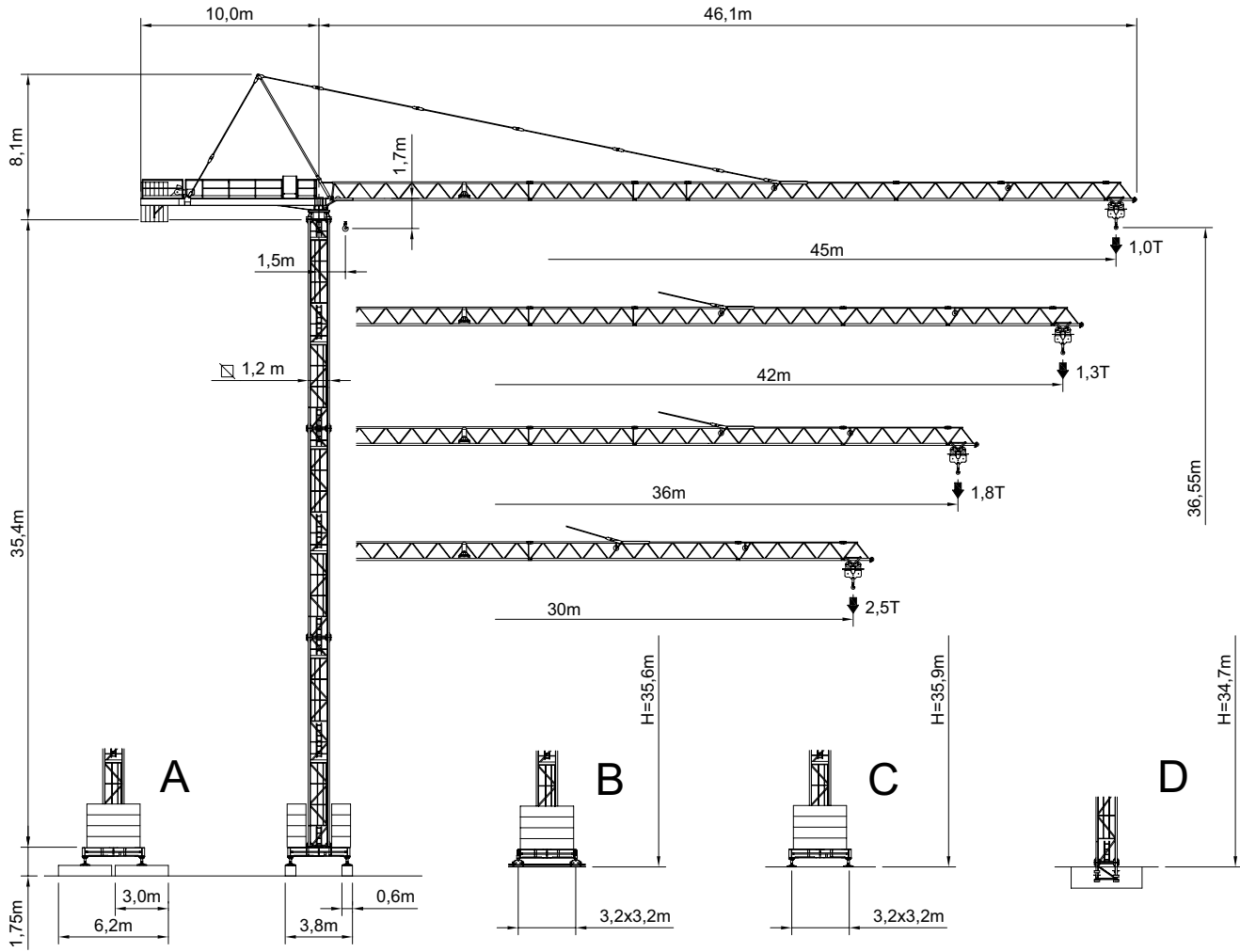
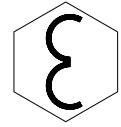
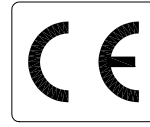
Disponibile con elementi di torre da 12 o 6 metri, può essere installata in un solo giorno. Dispone di un braccio da 45 metri, facile da assemblare e semplicissimo da montare. Sulla controfreccia tutti i meccanismi sono montati e cablati e il giro della fune di sollevamento è già eseguito.

MR66

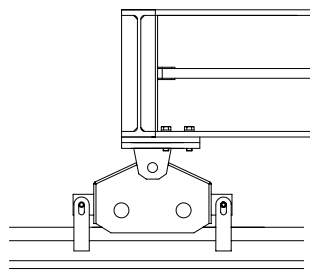
Available with 6 or 12 m. tower components, this crane can be assembled in just one day. It is equipped with a 45 m. jib, very easy to be assembled. All mechanisms are installed and wired on the counter-jib and the lifting rope coil is already executed.

City Crane MR 66E

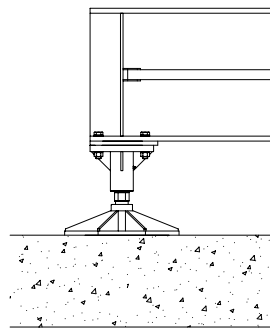
GRU A TORRE A MONTAGGIO RAPIDO
«CITY TOWER CRANE»



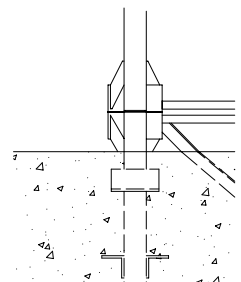
A



B








C



D

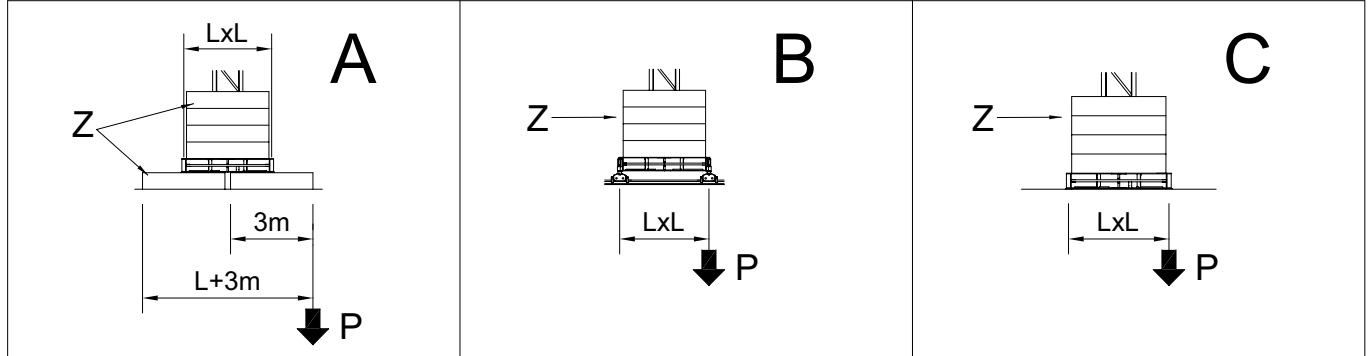
RAGGI E PORTATE
RADIUS AND S.W.L.
PORTEE ET CHARGE UTILE
AUSLADUNG UND TRAGFAHIGKEIT

Portata max / Max s.w.l. Charge maxi / Max. Tragfähigkeit		2500 kg. 				3000 kg. 				4000Kg   / 2000 kg. 			
Braccio / Jib Ausleger / Flèche	m.	30	36	42	45	30	36	42	45	30	36	42	45
Campo di portata max da Max s.w.l. range from Charge maxi de Max. Tragfähigkeit von	1,5 m a to à bis	30	26,9	23,9	21,2	25,5	23,2	20,7	18,0	19,7	17,9	16,0	14,0
Raggi (m.) Radii (m.) Portée (m.) Ausladung (m.)	12	2500	2500	2500	2500	3000	3000	3000	3000	4000	4000	4000	4000
	14	2500	2500	2500	2500	3000	3000	3000	3000	4000	4000	4000	4000
	16	2500	2500	2500	2500	3000	3000	3000	3000	4000	4000	4000	3450
	18	2500	2500	2500	2500	3000	3000	3000	3000	4000	3910	3460	3018
	20	2500	2500	2500	2500	3000	3000	3000	2675	3860	3460	3050	2675
	22	2500	2500	2500	2396	3000	3000	2790	2396	3460	3100	2730	2396
	24	2500	2500	2460	2166	3000	2880	2460	2166	3130	2800	2460	2166
	26	2500	2500	2310	1971	2940	2630	2310	1971	2850	2540	2230	1971
	28	2500	2400	2110	1806	2690	2400	2110	1806	2610	2320	2030	1806
	30	2500	2230	1950	1662	2500	2230	1950	1662	2400	2140	1870	1662
	32		2060	1815	1537		2060	1815	1537		1970	1720	1537
	34		1920	1680	1427		1920	1680	1427		1830	1590	1427
	36		1800	1570	1330		1800	1570	1330		1700	1480	1330
	38			1470	1243			1470	1243			1370	1243
	40			1380	1165			1380	1165			1280	1165
42			1300	1094			1300	1094			1200	1094	
45				1000				1000				1000	

BRACCIO E CONTRAPPESO
JIB AND COUNTERWEIGHT
FLECHE ET CONTREPOID
AUSLEGER UND GEGENGEWICHTSBALLAST

Braccio / Jib Flèche / Ausleger	(m)	30	36	42	45
Contrappeso / Counterweight Contrepoid / Gegengewicht	(t)	5,800	7,250	8,700	9,150
Composizione Composition Komposition	Tipo / Type	Quantità / Quantity / Nombre / Anzahl			
	AH	4	5	6	6
	AH1	-	-	-	1

ALTEZZA SOTTO-GANCIO, ZAVORRA DI BASE, REAZIONI
 H.U.H., MAX. BASE BALLAST AND CORNER PRESSURE
 H.S.C., LEST DE BASE MAXI ET REACTIONS
 HAKENHOHEN, MAXIMALE ZENTRALBALLASTE UND ECKKRAFT

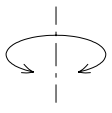
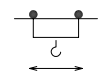
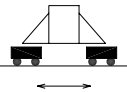


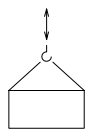

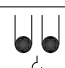
SU BASE / ON CROSSBASE SUR CHASSIS / AUF KREUZRAHME								
L = 3,8 m (□ 1,2m)								
H (m)	max. Z (t)	P (kN)	H (m)	max. Z (t)	P (kN)	H (m)	max. Z (t)	P (kN)
40,2	49,5	523	39,8	49,5	522	39,4	49,5	505
36,2	49,5	414	35,8	49,5	413	35,4	49,5	397
30,3	49,5	336	29,9	49,5	339	29,5	49,5	334
24,4	39,6	290	24,0	39,6	293	23,6	39,6	289
18,5	39,6	273	18,1	39,6	275	17,7	39,6	271

SU BASE / ON CROSSBASE SUR CHASSIS / AUF KREUZRAHME								
L = 3,2 m (□ 1,2m)								
H (m)	max. Z (t)	P (kN)	H (m)	max. Z (t)	P (kN)	H (m)	max. Z (t)	P (kN)
36,0	49,5	493	35,6	49,5	489	35,2	49,5	483
30,1	49,5	363	29,7	49,5	365	29,3	49,5	362
24,2	49,5	338	23,8	44,5	329	23,4	44,5	325
18,3	49,5	318	17,9	44,5	309	17,5	44,5	305
12,4	39,6	277	12,0	39,6	280	11,6	39,6	277

SU PLINTO / STATIONARY
 SUR PIEDS DE SCELLEMENT / STATIONAR

H (m)	11,1	17,0	22,9	28,8	34,7	38,7
T (kN)	313	348	394	452	612	798
P (kN)	411	453	505	570	740	930
q max. (Kg/cm ²)	0,87	0,94	1,04	1,16	1,69	2,53

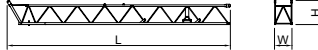
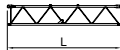

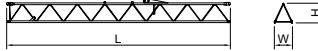
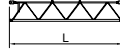
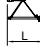

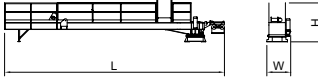

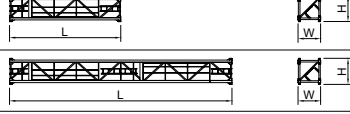







		Velocità / Speed / Vitesse / Geschwindigkeit	Potenza / Power / Puissance / Leistung
Rotazione Slewing Orientation Schwenken		0,35 / 0,62 / 0,94 min ⁻¹	4,0 Kw
Carrello Trolley Chariot Katzfahren		28,5 / 57 m/min	1,1/2,2Kw
Traslazione Rail Translation Kranfahren		14 m/min	2 x 2,9 Kw

Argano Winch Treuril Hubwerk		Marcia Step Vitesse Gang	Carico / velocità - Load / speed Charge / vitesse - Tragfähigkeit / Geschwindigkeit	
				
Tipo Type Type Typ	15 HP 11 Kw - 2,5	1	2500 Kg - 5,2 m/min	-
		2	2500 Kg - 21 m/min	-
		3	1250 Kg - 42 m/min	-
	25 HP 18,4 Kw - 3	1	3000 Kg - 7,5 m/min	-
		2	3000 Kg - 30 m/min	-
		3	1500 Kg - 60 m/min	-
	15 HP 11 Kw - 4	1	2000 Kg - 6,7 m/min	4000 Kg - 3,4 m/min
		2	2000 Kg - 27 m/min	4000 Kg - 13,5 m/min
		3	1000 Kg - 54 m/min	2000 Kg - 27 m/min

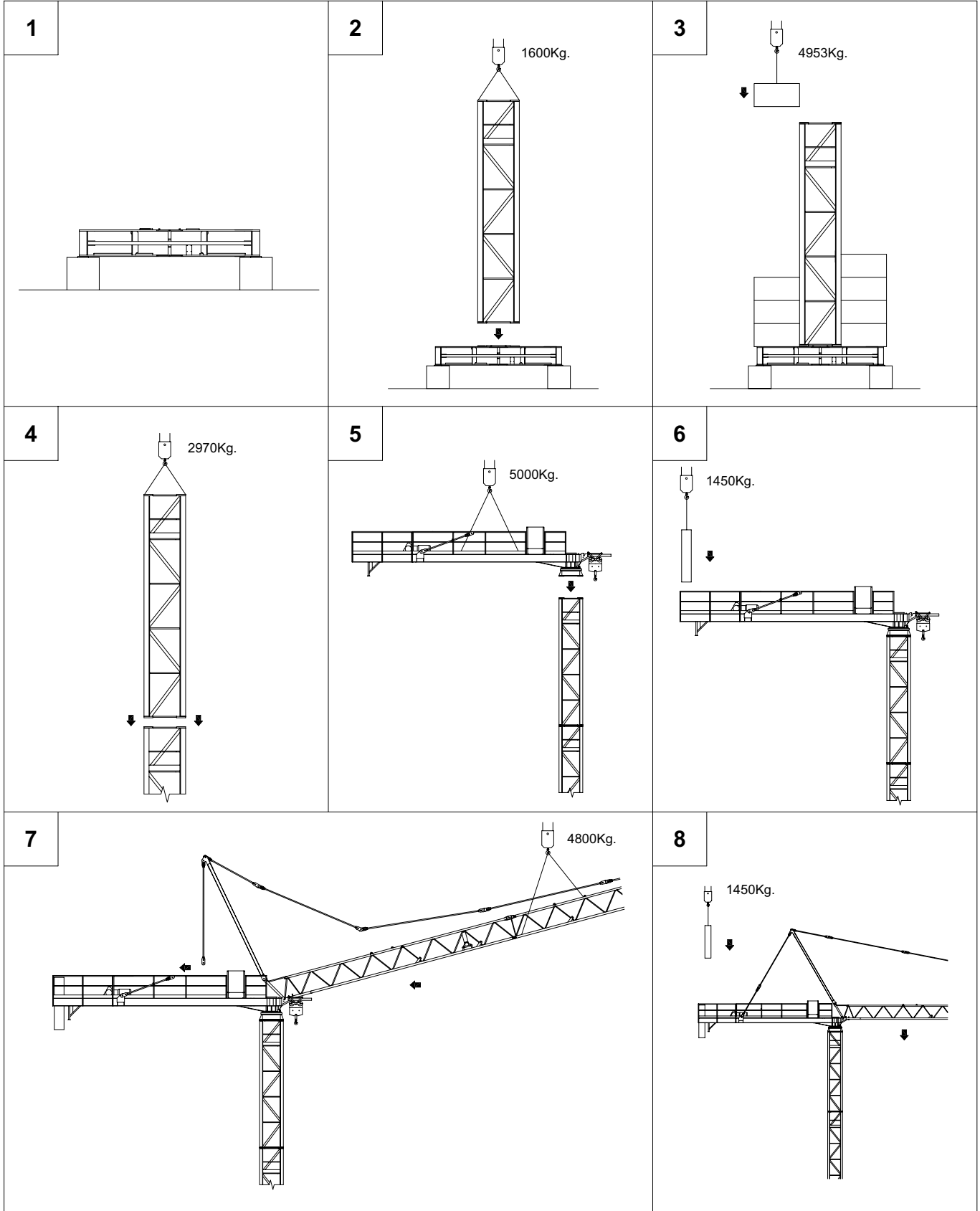
Conforme alla direttiva CEE 85/534 sul livello acustico - In compliance with the EEC 84/534 instruction on noise level - Conforme à directive CEE 84/534 sur le niveau acoustique
Gemäss EWG 84/534 über Schall - Leistungspegel - Conforme con la direttiva CEE 84/534 sobre el nivel acustico.

FORZA MOTRICE TOTALE TOTAL INSTALLED POWER PUISSANCE TOTALE DES MOTEURS GESAMT-MOTORENLEISTUNG	11 Kw (15HP)	18,4 Kw (25HP)
	23 Kw	31 Kw

LISTA DEI PESI / PACKING LIST
LISTE DE COLISAGE / KOLLI-LISTE

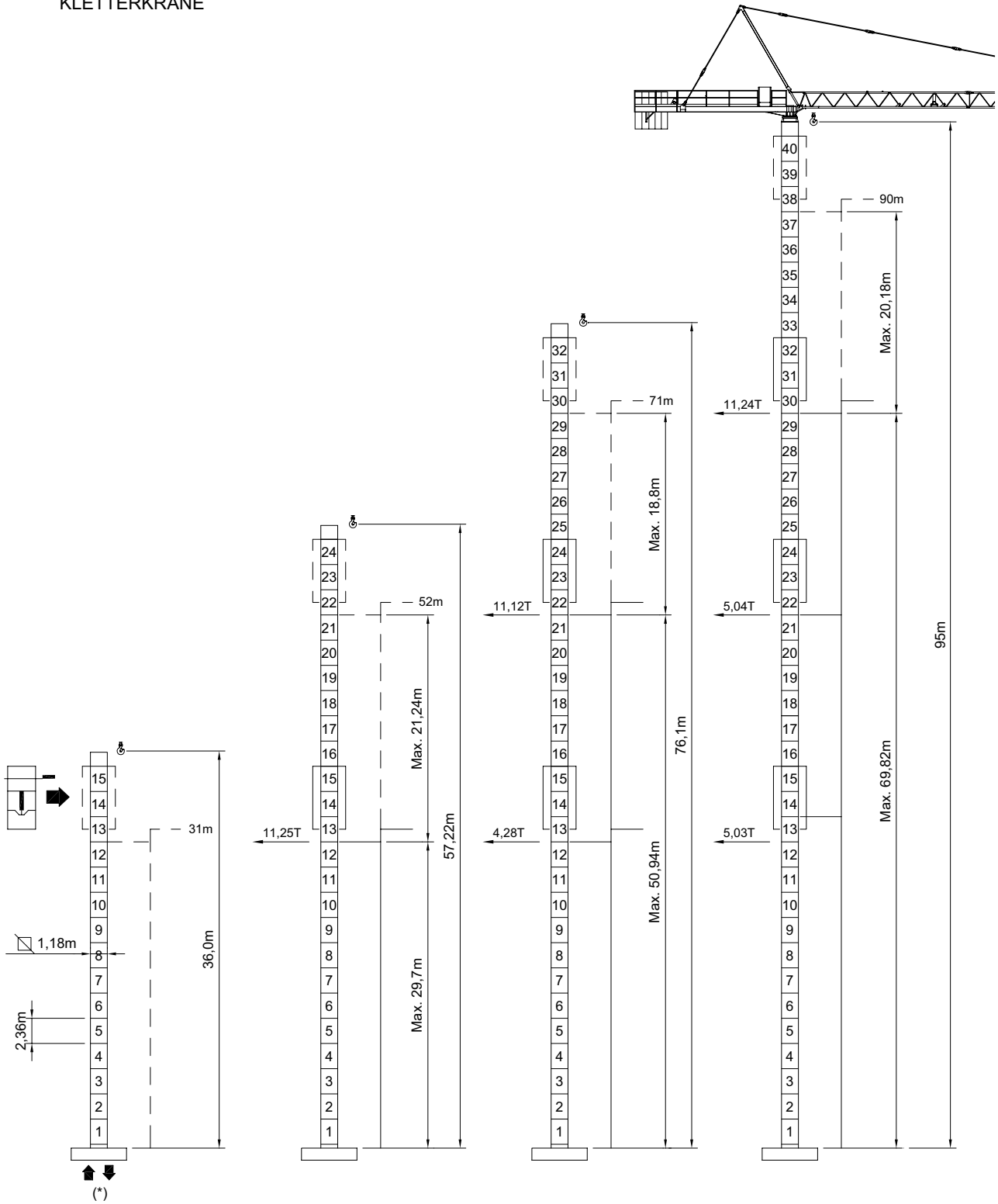
Pos. Item	Pezzi Pieces	Denominazione Description	Schizzo Sketch	Dimensioni Dimensions			Peso Weight (Kg)	
				L	W	H	Unit.	Total.
1	1	Elemento di freccia Jib element Elément de flèche Ausleger	N°1 	12,005	1,100	1,295		885
	1		N°2 	6,090	1,100	1,100		410
	1		N°2A 	3,130	1,100	1,100		233
	1		N°3 	12,010	1,100	1,100		880
	2		N°4-5 	6,160	1,100	1,100	370	740
	1		N°6 	1,850	1,100	1,100		120
2	1	Cuspide A frame Pointe Turmspitze 	6,750	0,400	0,950		385	
3	1	Controfreccia girevole, argano sollev., quadro elettrico, carrello freccia. Counterjib-turntable, hoisting winch, trolley jib, electrical box. Contreflèche tournante, treuil de levage, chariot de flèche, armoire électrique. Gegenausleger, Hubwinde, Drehwerk Laufkatze, Schaltschrank. 	11,970	1,540	2,340		5000	
4	6	Blocchi di contrappeso Counterweight block Contre-poids Gegengewichtsbloecke (AH) 	1,250	0,250	2,220	1450	8700	
5	1	Elemento di torre Tower element Elément de mature Turmstück 	5,900	1,200	1,380	1515	1515	
			11,800	1,200	1,380	2830	2830	
6	1	Tronchetto di fondazione Expendable foundation element Elément a sceller Fundamentanker 	1,350	1,490	1,490		730	
7	1	Trave principale della crociera di base Base main beam Poutre de chassis de base Hauptträger für Kreuzgelenk 	4,680	0,670	0,560		1020	
8	2	Semitrave della crociera di base Half base beam Semipoutre de chassis de base Halbträger für Kreuzgelenk 	2,270	0,450	0,590	535	1070	
9	4	Blocco di appoggio Concrete pad Sabot en béton Betonfuss (B1) 	3,000	0,600	0,600	2465	9860	
10	2	Bilancino traslazione folle Driven bogie Boggie fou Fahrschemel ohne motorantrieb 	0,800	0,195	0,385	190	380	
11	2	Bilancino traslazione motorizzato Driving bogie Boggie motorisée Fahrschemel mit motorantrieb 	0,925	0,425	0,385	310	620	
12	10	Blocco di zavorra Base ballast block Lest de base Grundballastblöcken (A) 	3,000	1,200	0,600	4953	49530	

SEQUENZA DI MONTAGGIO
ASSEMBLING SEQUENCE
SEQUENCE DE MONTAGE
AUFSTELLUNG SEQUENZ



MR 66HC

A SOPRALZO IDRAULICO
EXTERNAL CLIMBING
TELESCOPABLE
KLETTERKRANE



* Vedi tabella a pag. 4 - See table at page 4 - Voir table à la page 4 - Siehe tafel an seite 4

CARLO RAIMONDI S.p.A

Gru a torre per l'edilizia
Building tower cranes
Grues tour
Turmdrehkrane



Stabilimento:
Corso Garibaldi 253 - 20025 Legnano (MI) - ITALY - Fax: 0331450400 - Tel. 0331548061 - 0331545308 - www.raimondigru.it