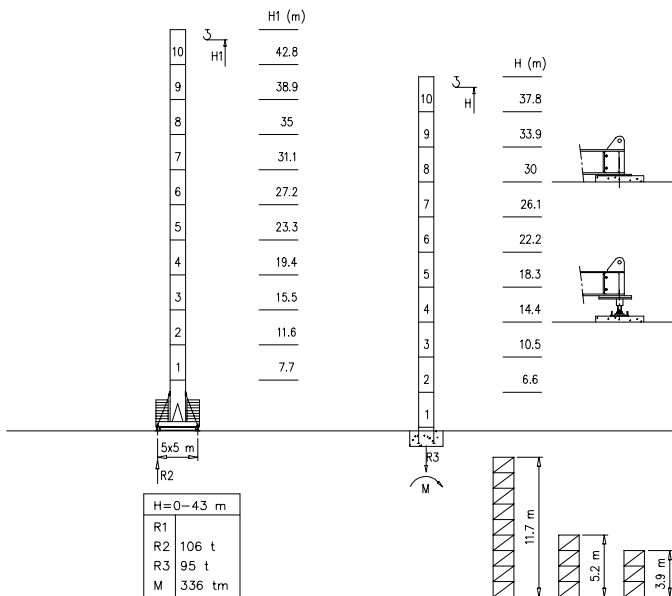
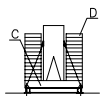


S1700

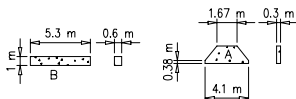
45 m → 65 m



Peso zavorra - Ballast weight - Poids du lest - Ballastgewicht - Peso de lastre



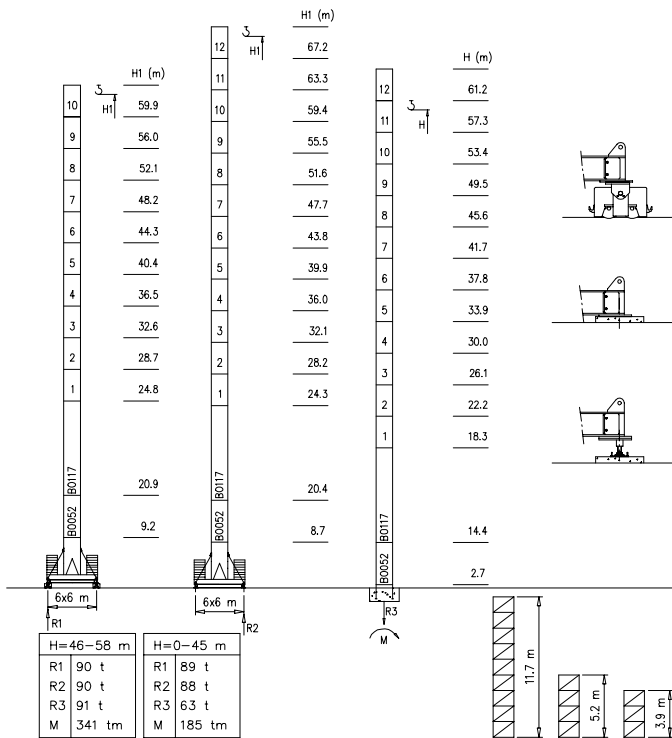
H	n°	Tot.
0-43 m	2A+26B	105000 kg



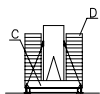
Torre/Reazioni - Masts/Reactions - Mat/Réactions - Maste/Eckdrücke - Mástil/Reacciones - Tramo/Reações

S2050

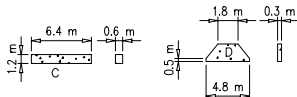
45 m → 65 m



Peso zavorra - Ballast weight - Poids du lest - Ballastgewicht - Peso de lastre



H	n*	Tot.
0-55 m	2C+ 16D	102320 kg
56-67 m	2C+ 18D	112610 kg



Curve di carico - Courbes de charges - Load diagrams - LastKurven - Curvas de cargas

Pmax 6000 kg

	28400 kg	65 m	3.5	30	34	36	38	40	42	44	46	48	50	52	54	56	58	60	62	65	m
			6000	6000	5300	4900	4500	4200	3900	3700	3500	3400	3200	2900	2800	2700	2600	2500	1800	1700	kg
	28400 kg	60 m	3.5	30	34	36	38	40	42	44	46	48	50	52	54	56	58	60			m
			6000	6000	5300	4900	4500	4200	3900	3700	3500	3400	3200	2900	2800	2700	2600	2500			kg
	25560 kg	55 m	3.5	33	34	36	38	40	42	44	46	48	50	52	54	55					m
			6000	6000	5900	5500	5000	4700	4400	4000	3800	3600	3500	3300	3200	3000					kg
	22720 kg	50 m	3.5		35	36	38	40	42	44	46	48	50								m
			6000		6000	5700	5200	4900	4600	4300	4000	3700	3500								

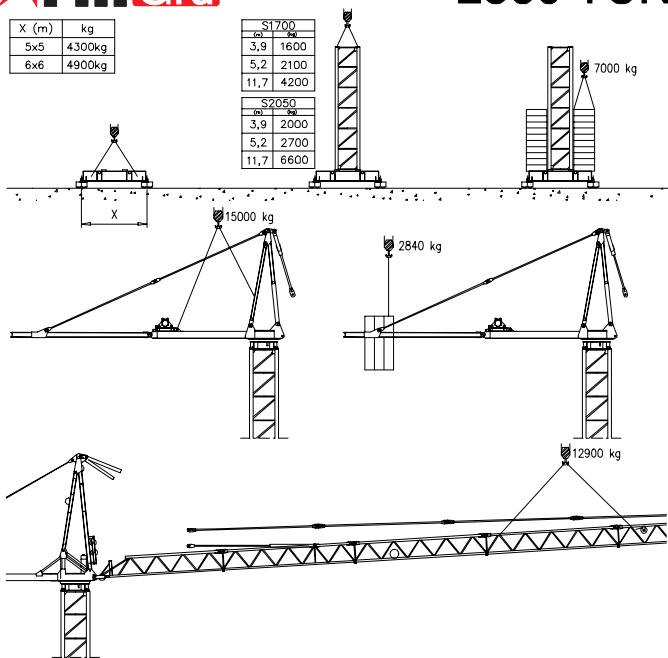
Pmax 12000/6000 kg

	28400 kg	65 m	3.5	16	20	24	28	30	34	36	38	40	42	44	46	48	50	52	54	56	58	60	62	65	m
			12000	9800	8100	6800	6000	5300	4900	4500	4200	3900	3700	3500	3400	3200	2900	2800	2700	2600	2500	1800	1700		
	28400 kg	60 m	3.5	16	20	24	28	30	34	36	38	40	42	44	46	48	50	52	54	56	58	60			m
			12000	9800	8100	6800	6000	5300	4900	4500	4200	3900	3700	3500	3400	3200	2900	2800	2700	2600	2500				
	25560 kg	55 m	3.5	16	20	24	28	30	34	36	38	40	42	44	46	48	50	52	54	55					m
			12000	10000	9000	7600	7000	5900	5500	5000	4700	4400	4000	3800	3600	3500	3300	3200	3000						
	22720 kg	50 m	3.5	18	20	24	28	30	34	36	38	40	42	44	46	48	50								m
			12000	11500	9700	8200	7300	6100	5700	5200	4900	4600	4300	4000	3700	3500									

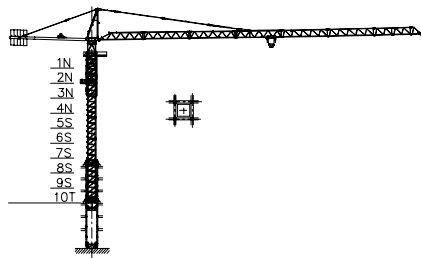
X (m)	kg
5x5	4300kg
6x6	4900kg

S1700	
(m)	(kg)
3,9	1600
5,2	2100
11,7	4200

S2050	
(m)	(kg)
3,9	2000
5,2	2700
11,7	6600



Gru in cavedito - Climbing crane - Télescopage sur dalles - Kletterkrane in Gebäude - Telescopage gruas trepadoras - Telescopagem sobre lajes



Number of tower section	H (m.)
5S+2N+T	33.40
5S+3N+T	37.30
5S+4N+T	41.20

N = Standard mast element  
 T = Telescopic element  
 S = Special mast element

Meccanismi – Mechanisms – Mécanismes – Antriebe – Mecanismos

Sollevamento Hoisting Lavage Heben Elevación Elevação	V45.60		1a	2 m/min	6000 kg	33 kW	V45.60 57 kVA
			2a	20 m/min	6000 kg		
			3a	31 m/min	5000 kg		
			4a	46 m/min	3600 kg		
			5a	60 m/min	2600 kg		
			1a	1 m/min	12000 kg		
			2a	10 m/min	12000 kg		
			3a	15 m/min	10000 kg		
			4a	23 m/min	7200 kg		
			5a	30 m/min	5200 kg		
Sollevamento Hoisting Lavage Heben Elevación Elevação	V80.100		1a	2 m/min	6000 kg	60 kW	V80.100 89 kVA
			2a	40 m/min	6000 kg		
			3a	60 m/min	4000 kg		
			4a	80 m/min	3000 kg		
			5a	100 m/min	2600 kg		
			1a	1 m/min	12000 kg		
			2a	20 m/min	12000 kg		
			3a	30 m/min	8000 kg		
			4a	40 m/min	6000 kg		
			5a	50 m/min	5200 kg		
Carrello Trolleying Distribution Katzfahren Distribución Distribuição			1a	5 m/min	12000 kg	5.5 kW	Potenza elettrica necessaria Puissance électrique nécessaire Necessary electric power Anschlusswert   Potencia
			2a	40 m/min	12000 kg		
			3a	80 m/min	6000 kg		
Rotazione Slewing Orientation Schwenken Orientación Rotação			1a	0 → 0.2	giri/min tr/min rp/min	6.6 kW @ 1200rpm n° 3 x 2.2 kW	Potenza elettrica necessaria Puissance électrique nécessaire Necessary electric power Anschlusswert   Potencia
			2a	0 → 0.6			
			3a	0 → 0.9			
Traslazione Travelling Translation Kranfahren Traslación Traslación			1a	0 → 5	9 kW	Potenza elettrica necessaria Puissance électrique nécessaire Necessary electric power Anschlusswert   Potencia	
			2a	0 → 20			

Rete elettrica – Réseau – Mains supply – Netzstrom – Red – Rede electrica 400V – 50 Hz

FMgru s.r.l.  
via Emilia 11-29010 Pontenure PC ITALY  
tel. 0523/510446 ric.cst. fax 0523/510385  
www.fmgru.com e-mail: info@fmgru.com

FEM 1.001  
2000/14/CE



Documento commerciale non costruttivo  
Par tutte le informazioni tecniche riferirsi  
alle corrispondenti Istruzioni!

Unverbindliches Vertriebsdokument.  
Für technische Informationen, siehe die  
entsprechenden Anweisungen.

This commercial document is not legally  
binding. For any technical information, please  
refer to the corresponding instructions.

Documento comercial no constructivo  
Para cualquier información técnica,  
ver la redicla correspondiente.

Code: 15ICAS7K45A1  
Ed. Data: [ ] Rev. Data: [ ]  
11-05-05-03/01-05-06-03