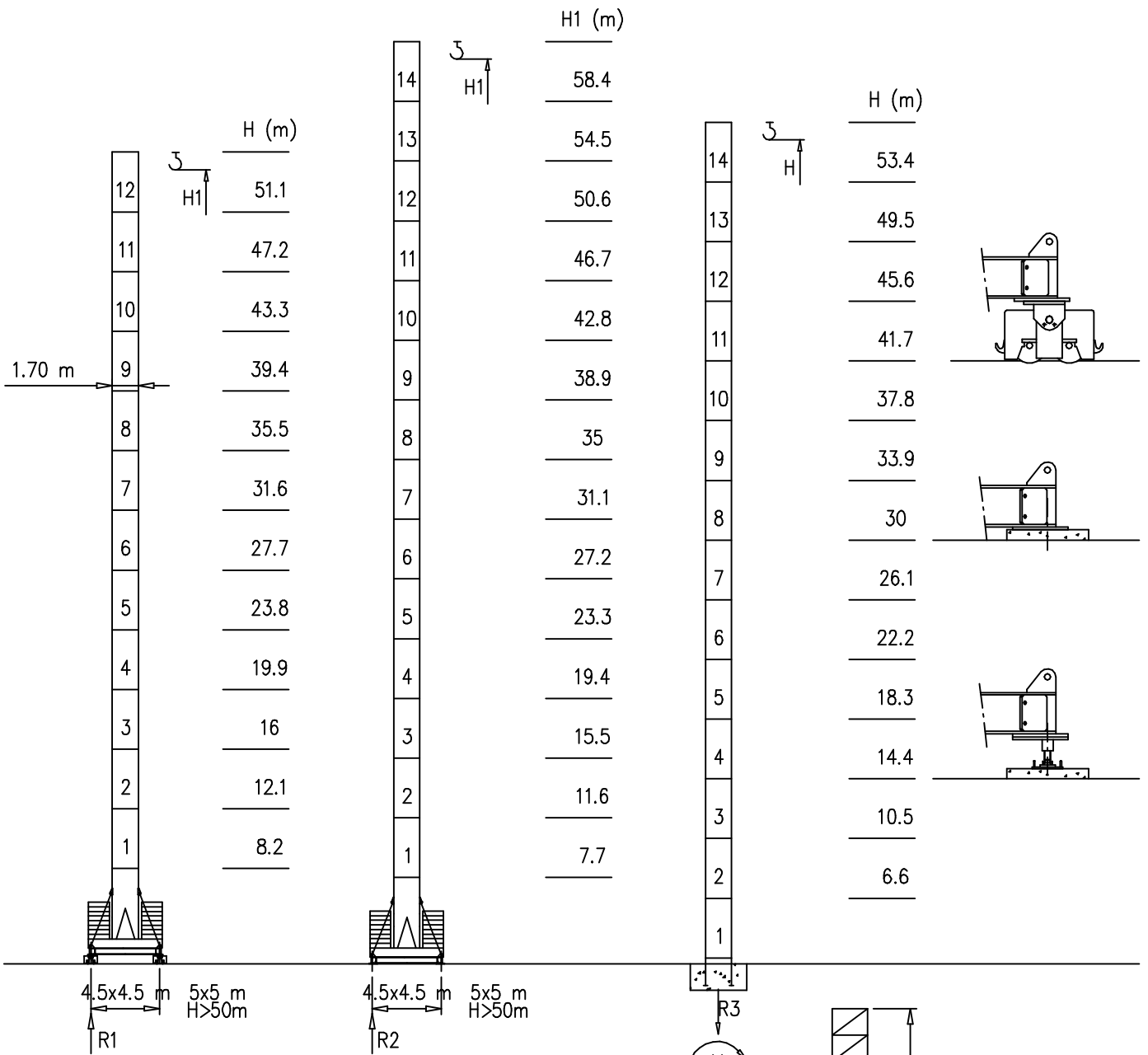


- S1700 - 1.70x1.70 m
- S2050 - 2.05x2.05 m
-
- ⌋

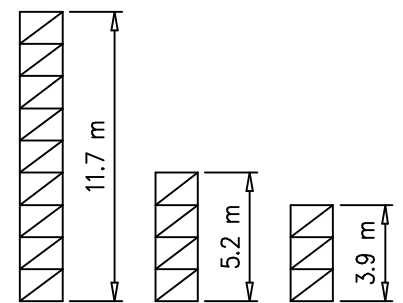
Torre/Reazioni – Masts/Reactions – Mat/Réactions – Maste/Eckdrücke – Mástil/Reacciones – Tramo/Reacções

S1700

33 m → 60 m

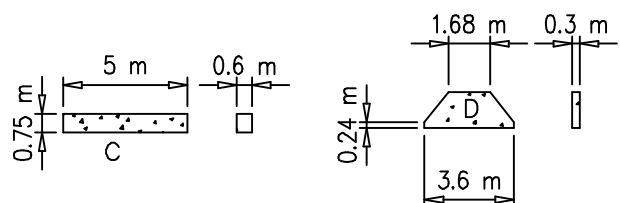


H=46–56 m		H=0–45 m	
R1	106 t	R1	89 t
R2	106 t	R2	88 t
R3	95 t	R3	74 t
M	336 tm	M	194 tm



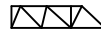
Peso zavorra – Ballast weight – Poids du lest – Ballastgewicht – Peso de lastre

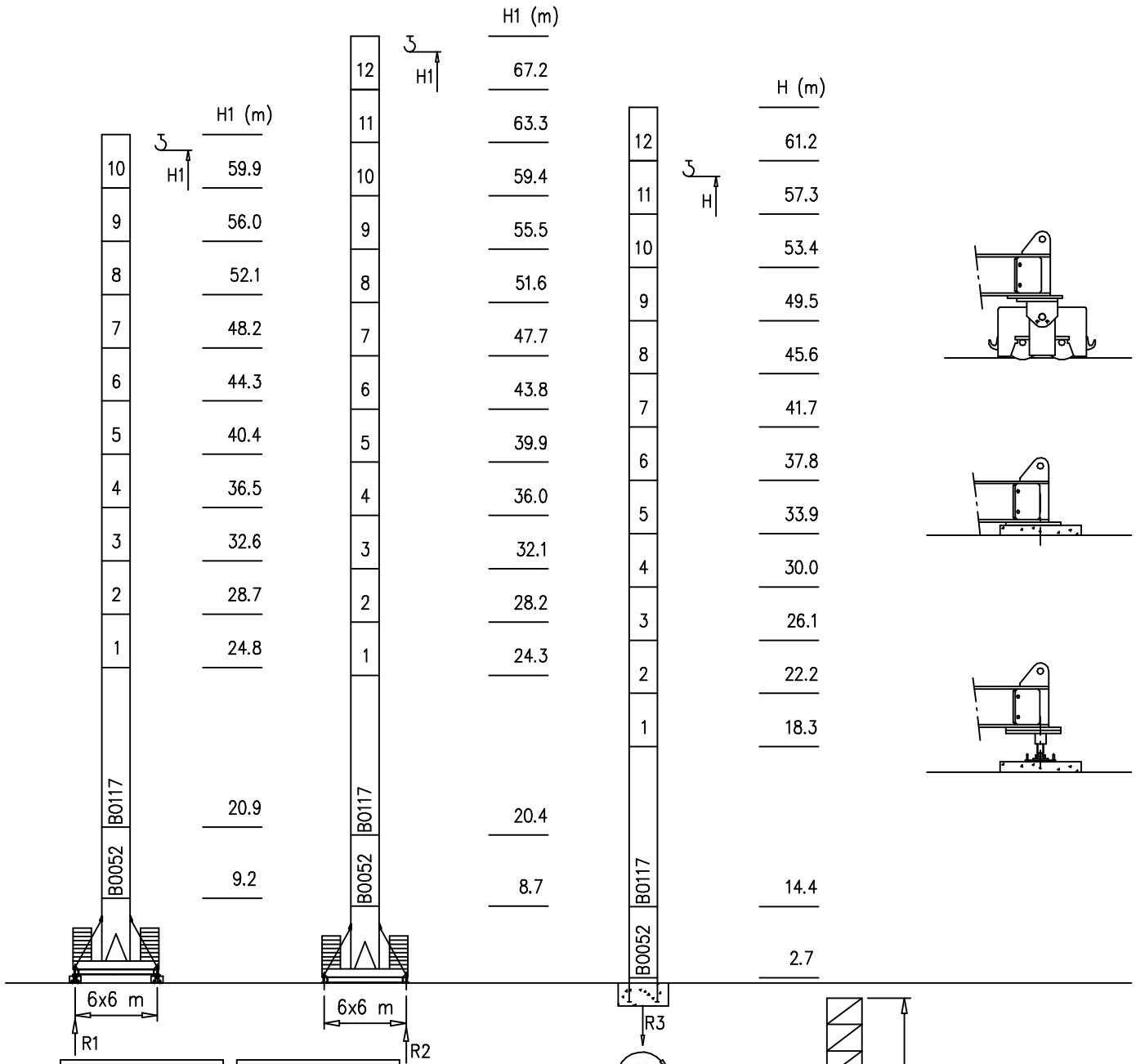
H	n°	Tot.
0–35 m	2C+18D	60800 kg
36–45 m	2C+22D	72000 kg
46–58 m	2C+38D	116750 kg



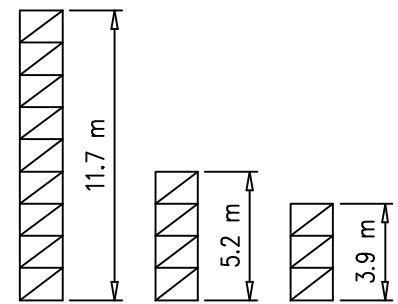
Torre/Reazioni – Masts/Reactions – Mat/Réactions – Maste/Eckdrücke – Mástil/Reacciones – Tramo/Reações

S2050

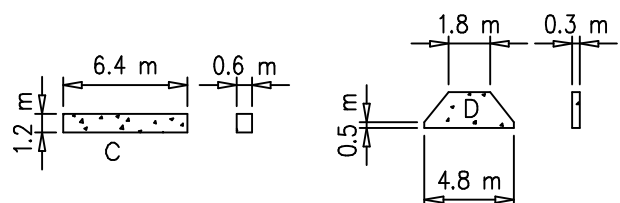
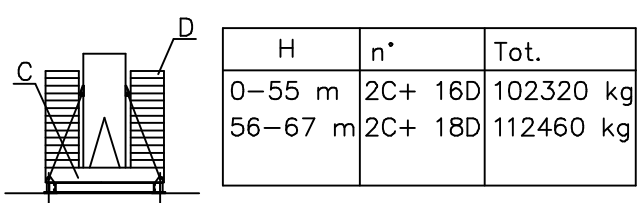
 33 m → 60 m



H=46–58 m		H=0–45 m	
R1	90 t	R1	89 t
R2	90 t	R2	88 t
R3	91 t	R3	63 t
M	341 tm	M	185 tm



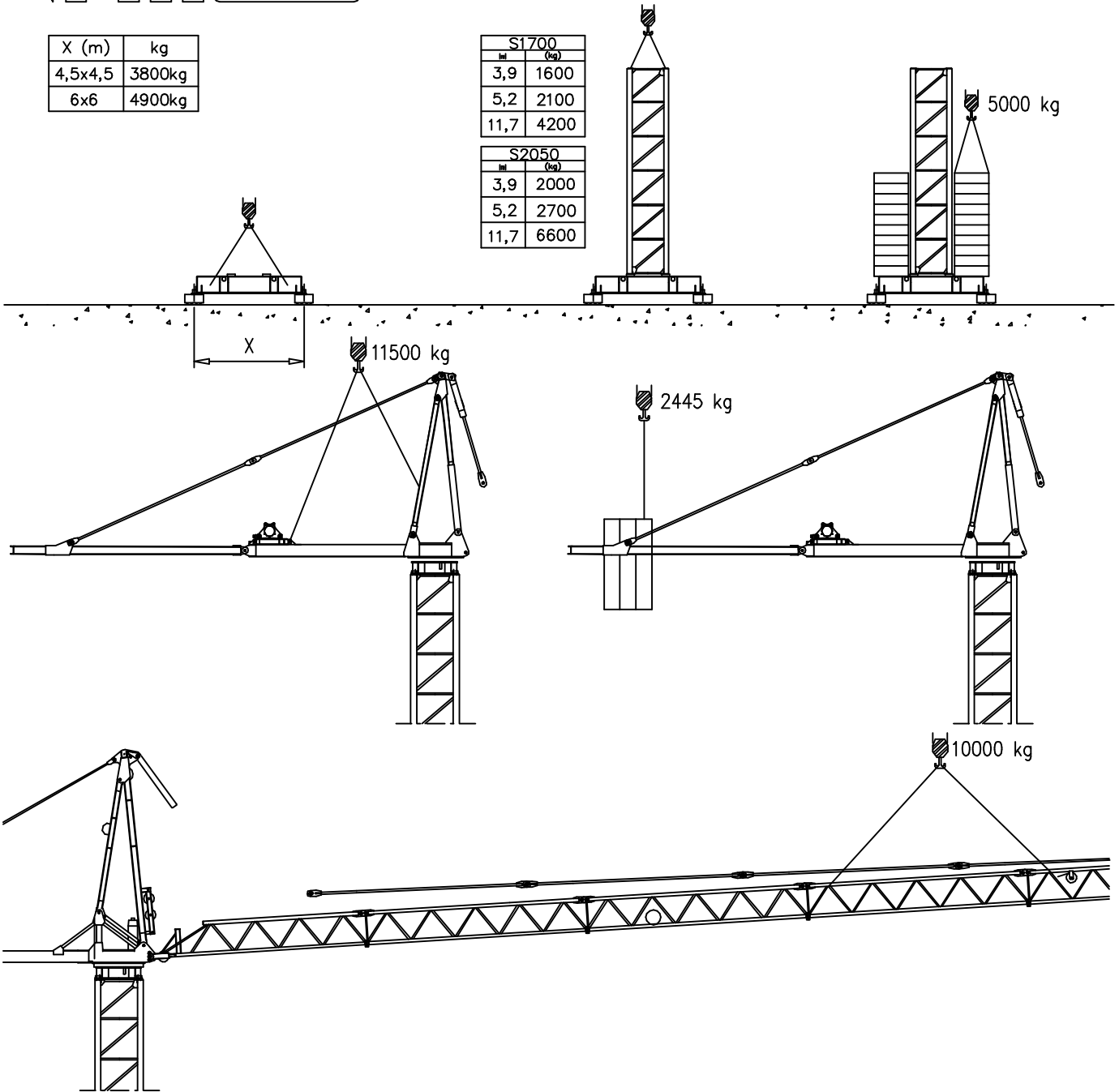
Peso zavorra – Ballast weight – Poids du lest – Ballastgewicht – Peso de lastre



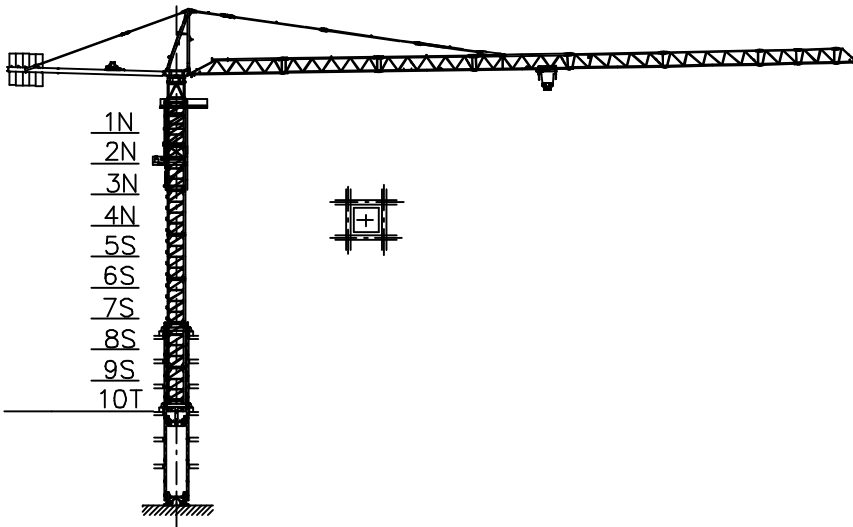
X (m)	kg
4,5x4,5	3800kg
6x6	4900kg

S1700	
m	(kg)
3,9	1600
5,2	2100
11,7	4200

S2050	
m	(kg)
3,9	2000
5,2	2700
11,7	6600










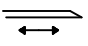



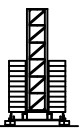


Gru in cavedio – Climbing crane – Télescopage sur dalles – Kletterkrane in Gebäude – Telescopage guas trepadoras – Telescopagem sobre lages



Number of tower section	H (m.)
5S+2N+T	33.40
5S+3N+T	37.30
5S+4N+T	41.20

N = Standard mast element
 T = Telescopic element
 S = Special mast element

Sollevamento S20.40 e V20.40 Hoisting Levage Heben Elevaciòn Elevaçao			1a	4 m/min	3000 kg	14.7 kW	S20.40 32 kVA
			2a	20 m/min	3000 kg		
			3a	40 m/min	1500 kg		
			1a	2 m/min	6000 kg		V20.40 28 kVA
			2a	10 m/min	6000 kg		
			3a	20 m/min	3000 kg		
Sollevamento S2560 e V25.60 Hoisting Levage Heben Elevaciòn Elevaçao			1a	7 m/min	3000 kg	18.5 kW	S25.60 38 kVA
			2a	28 m/min	3000 kg		
			3a	56 m/min	1500 kg		
			1a	3.5 m/min	6000 kg		V25.60 33 kVA
			2a	14 m/min	6000 kg		
			3a	28 m/min	3000 kg		
Sollevamento V45.60 Hoisting Levage Heben Elevaciòn Elevaçao			1a	2 m/min	6000 kg	33 kW	V45.60 50 kVA
			2a	20 m/min	6000 kg		
			3a	31 m/min	5000 kg		
			4a	46 m/min	3200 kg		
			5a	60 m/min	2500 kg		
Carrello Trolleying Distribution Katzfahren Distribuciòn Distribuiçao			1a	5 m/min	6000 kg	3 kW	Potenza elettrica necessaria Puissance électrique nécessaire Necessary electric power Anschlusswert – Potencia
			2a	25 m/min	6000 kg		
			3a	50 m/min	3000 kg		
Rotazione Slewing Orientation Schwenken Orientaciòn Rotaçao			1a	0 → 0.2	giri/min tr/min rp/min	4.4 kW @ 1200rpm n° 2 x 2.2 kW	
			2a	0 → 0.6			
			3a	0 → 0.9			
Traslazione Travelling Translation Kranfahren Traslaciòn Traslaçao			1a	OP 0 → 5	7.5 kW		
			2a	0 → 20			

Rete elettrica – Réseau – Mains supply – Netzstrom – Red – Rede electrica	400V – 50 Hz
---	--------------

 FMgru s.r.l. via Emilia 11-29010 Pontenure PC ITALY tel. 0523/510446 ric.aut. fax 0523/510365 www.fmgru.com e-mail: info@fmgru.com	FEM 1.001 2000/14/CE	
---	-------------------------	--



Documento commerciale non contrattuale
Per tutte le informazioni tecniche riferirsi
alle corrispondenti istruzioni

Unverbindliches Vertriebsdokument.
Für technische Informationen, siehe die
entsprechenden Anweisungen.

This commercial document is not legally
binding. For any technical information, please
refer to the corresponding instructions.

Documento comercial no contractual
Para cualquier información técnica,
ver la noticia correspondiente.

Code: 15ICA37K31A0		
Ed.	Data	Rev Data
1	06.07.06	1 06.07.06