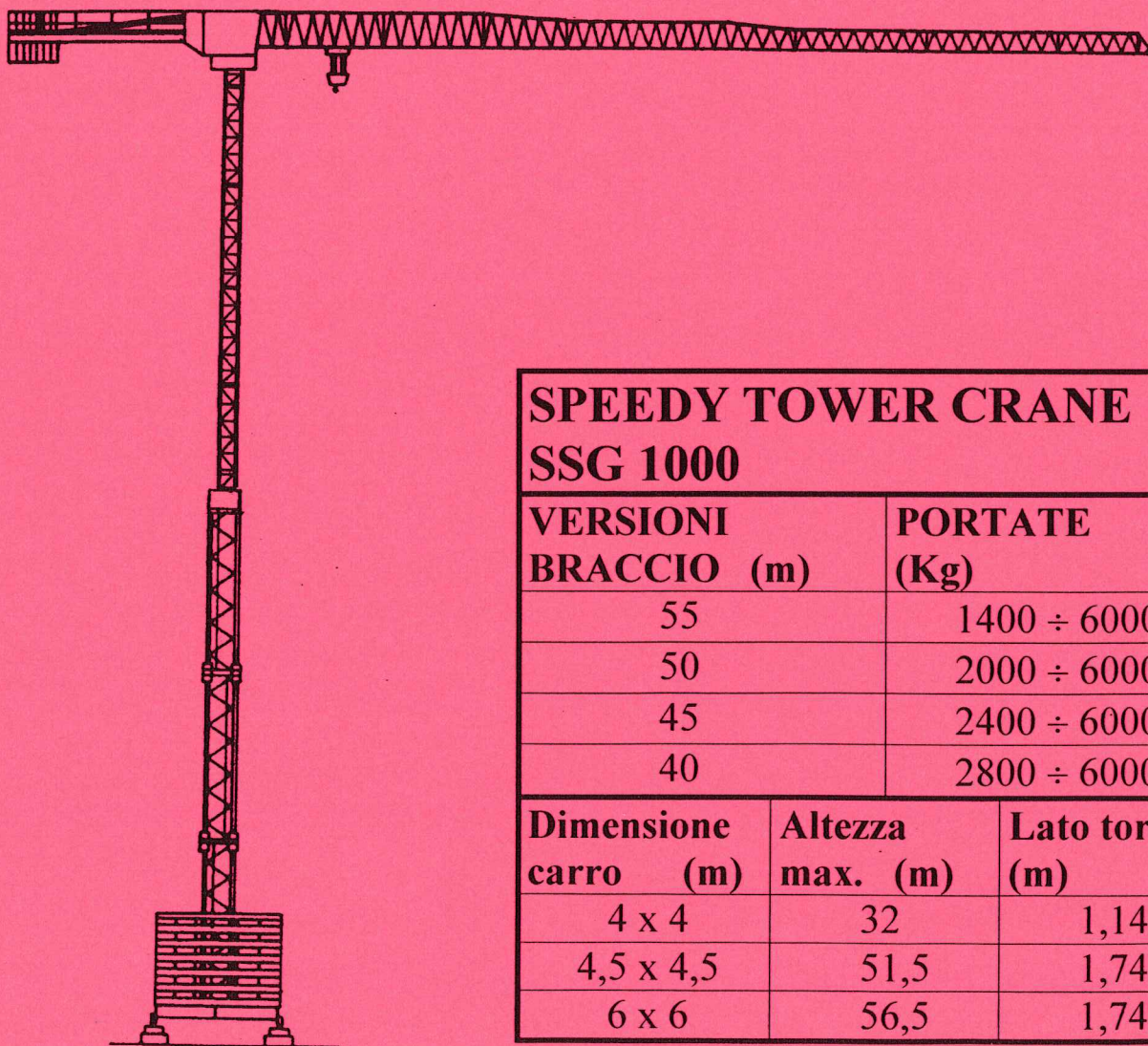




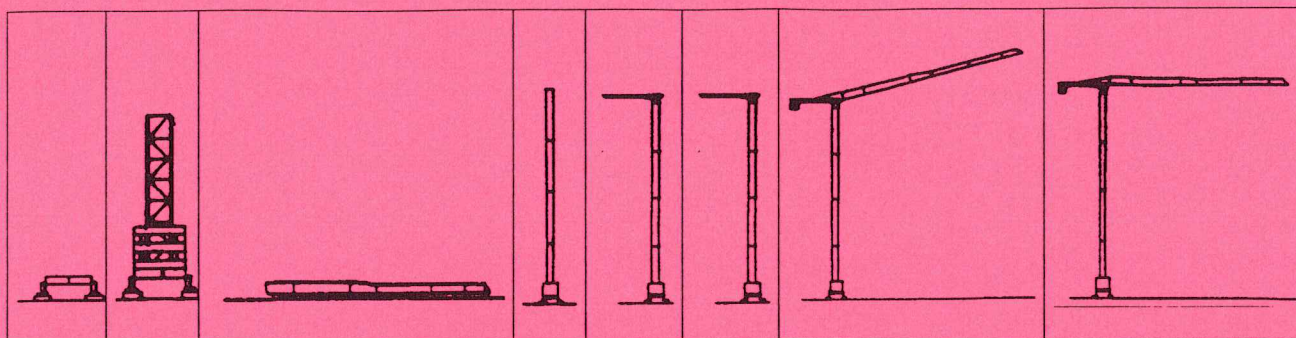
gru fari








SPEEDY TOWER CRANE SSG 1000


VERSIONI BRACCIO (m)	PORTATE (Kg)
55	1400 ÷ 6000
50	2000 ÷ 6000
45	2400 ÷ 6000
40	2800 ÷ 6000

Dimensione carro (m)	Altezza max. (m)	Lato torre (m)
4 x 4	32	1,14
4,5 x 4,5	51,5	1,74
6 x 6	56,5	1,74



Sollevamento Hoisting Levage Heben Elevación	MS 25 SEP		m/min		kg	HP	KW
			8	3000	25		
21	3000						
30	2500						
45	2000						
60	1500						
			4		6000	40	29,5
			10,5		6000		
			15		5000		
			22,5		4000		
			30		3000		
	MS 40 SEP		8		6000	40	29,5
			21		6000		
			30		5000		
			45		3000		
			60		2500		
			4		6000	40	29,5
			10,5		6000		
			15		6000		
			22,5		6000		
			30		5000		

Distribuzione - Trolleying - Distribution - Katzfahren - Distribución		8		4	3
		30			
		60			

Rotazione - Slewing - Orientation Schwenken - Orientación		0,2 giri/min		5,5	4
		0,5 giri/min			
		0,8 giri/min			

Traslazione - Travelling - Translation - Kranfahren - Tralación		20	/	/
--------------------------------------------------------------------	-------------------------------------------------------------------------------------	----	---	---

Rete elettrica - Mains supply - Réseau - Netzstrom - Red	380V	50 Hz
-------------------------------------------------------------	------	-------

Conforme alla direttiva CEE87/405 sul livello acustico. In compliance with the EEC 87/405 instruction on noise level. Conforme à la directive CEE 87/405 sur le niveau acoustique. Gemäss EWG- Richtlinie 87/405 Schall-Leistungspegel. Conforme con la direttiva CEE 87/405 sobre el nivel acustico

gru fari

OFFICINE FARI SRL
via Roma 194
36070 Castelgomberto (Vicenza) Italy
tel. 0445/940051 - fax 0445/941363

SSG 1000