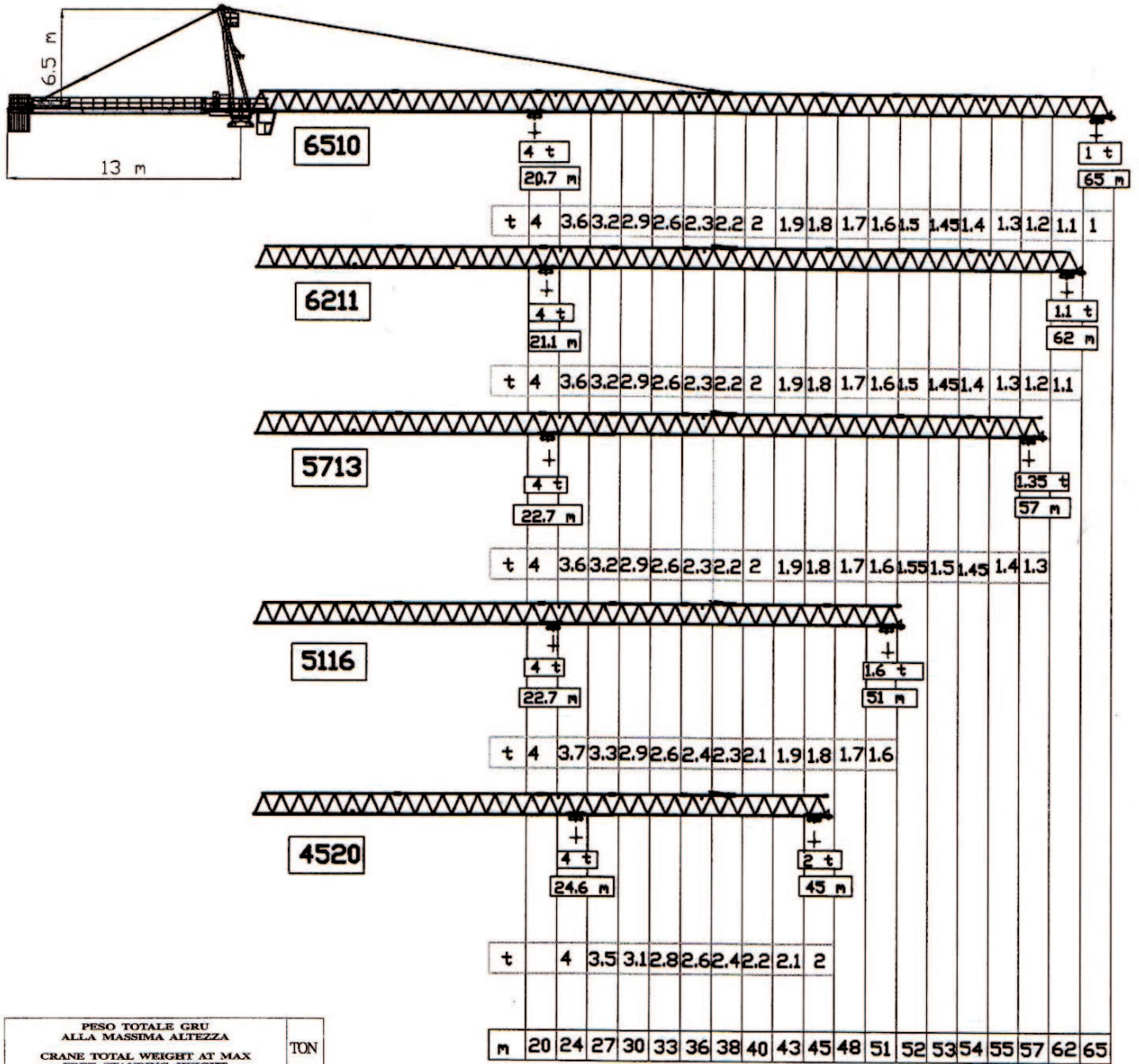


# TGC 65-1000 1,9

LINEA GC PEINER SYSTEM MOD:

**TERRELLI**  
GRU A TORRE PER L'EDILIZIA



PESO TOTALE GRU ALLA MASSIMA ALTEZZA CRANE TOTAL WEIGHT AT MAX FREE STANDING HEIGHT		TON
AT3 (T)	TRASLANTE TRAVELLING	56
AT3 (S)	APPOGGIATA STATIONERY	53
AT3 (F)	FISSA FIXED ON PLINTH	47
AT4		55
AT3 (C)	RAMPANTE CLIMBING	36

	F	F1	F2	F3
AT3	57	45	74	21
AT4	-	-	126	40

380 V 50 HZ	ARGANO WINCH	POTENZA MAX MAIN SUPPLY	GRUPPO GEN. GEN.
	33 HP	44 KVA	85 KVA
	50 HP	65 KVA	100 KVA

Max force in t  
Forces calculated with wind out of service at 37 m/s  
F= Forze maxime in t  
Forze calcolate con vento fuori servizio a 37 m/s

HOISTING ARGANO	☆ Argano con 5 velocità 5 speeds hoist		Kg
	HP 33	HP 50 ☆	
	60,0	90/70	2000
	30,0	45/17	4000
	5,0	4,0	4000
	30,0	45/36	4000
	15,0	22,5/8	8000
	2,5	2,0	8000

