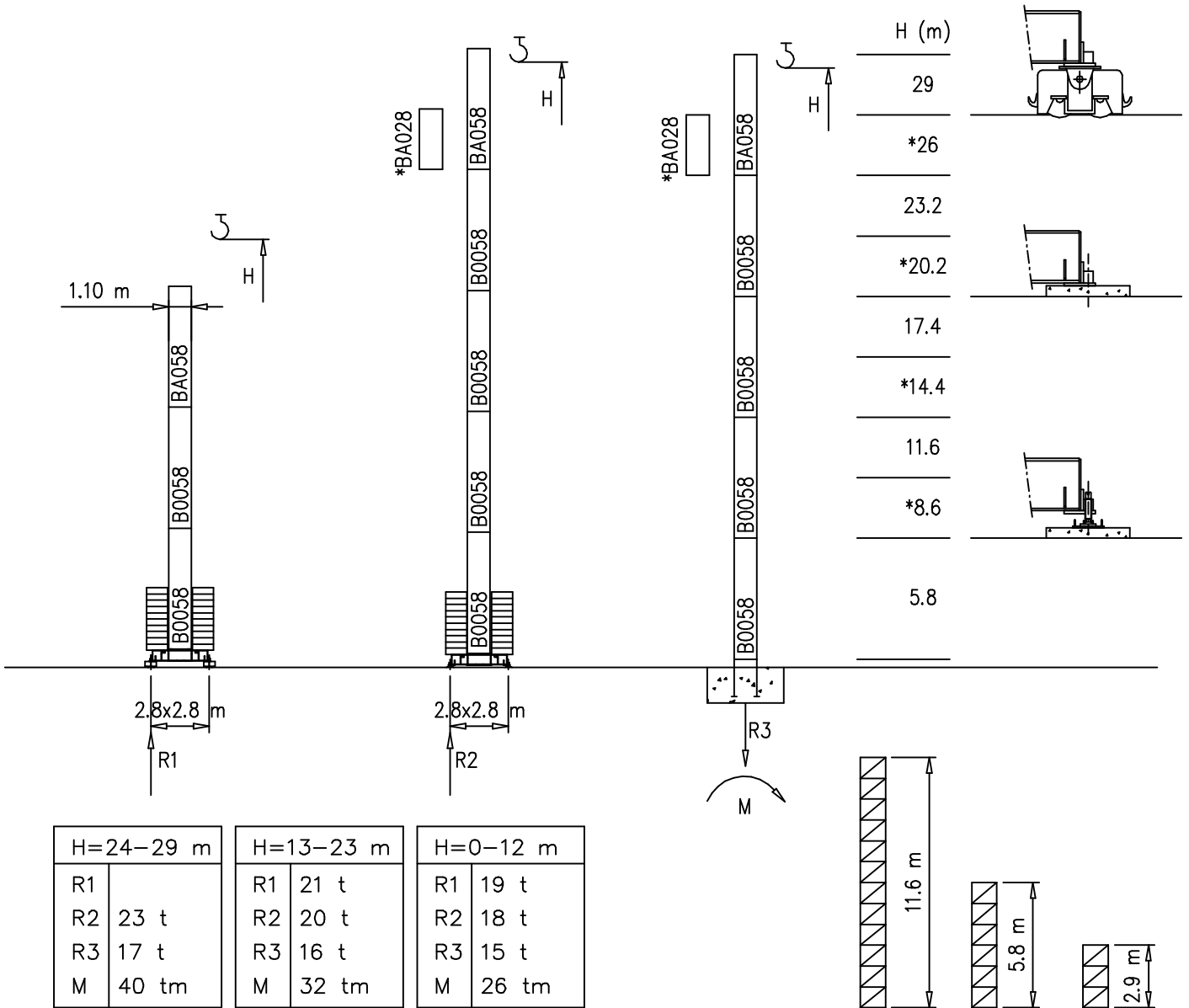


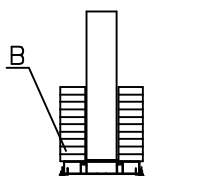
H=29 m
H=36 m

- S1210 - 1.21x1.21 m
- S1100 - 1.10x1.10 m

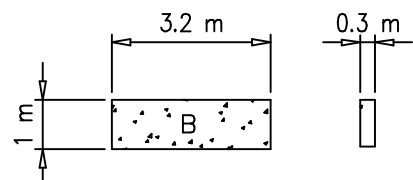
S1100



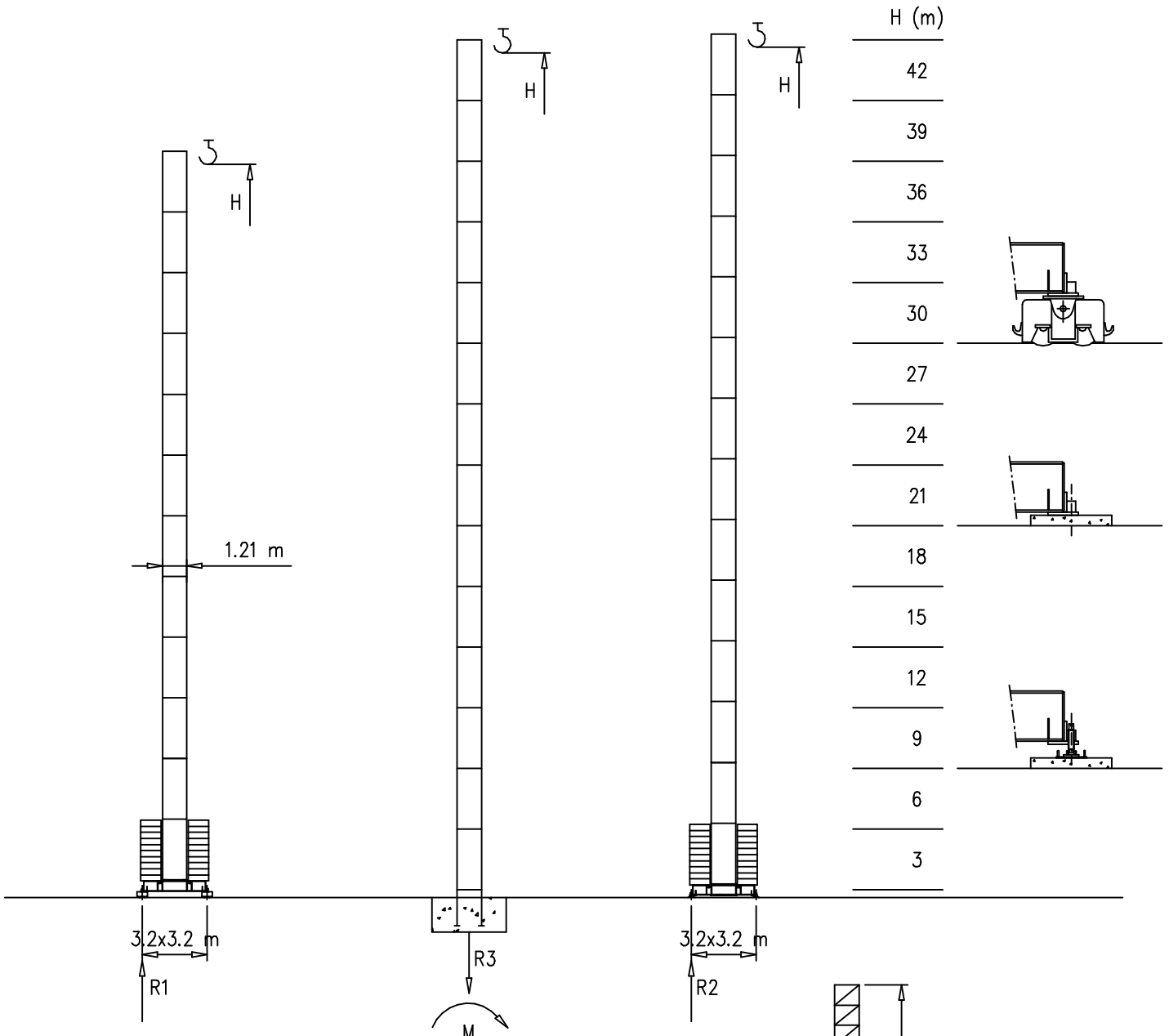
Peso zavorra – Ballast weight – Poids du lest – Ballastgewicht – Peso de lastre



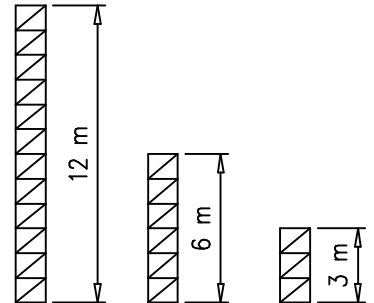
| H | n° | Tot. |
|---------|------|----------|
| 0-12 m | 10 B | 22000 kg |
| 13-23 m | 12 B | 26400 kg |
| 24-29 m | 14 B | 30800 kg |



S1210

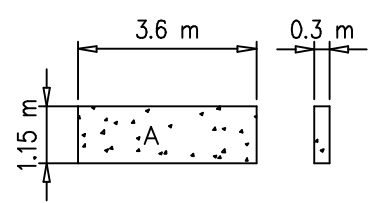


| H=37-42 m | | H=31-36 m | | H=19-30 m | | H=0-18 m | |
|-----------|--------|-----------|-------|-----------|-------|----------|-------|
| R1 | | R1 | 26 t | R1 | 21 t | R1 | 18 t |
| R2 | 69 t | R2 | 25 t | R2 | 20 t | R2 | 17 t |
| R3 | 40 t | R3 | 20 t | R3 | 19 t | R3 | 17 t |
| M | 185 tm | M | 48 tm | M | 40 tm | M | 28 tm |



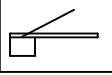
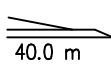
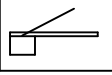
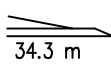
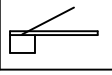
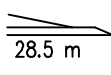
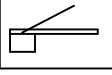
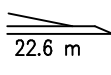
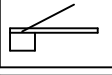
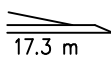
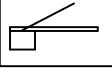
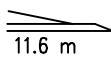
Peso zavorra - Ballast weight - Poids du lest - Ballastgewicht - Peso de lastre

| H | n° | Tot. |
|---------|------|----------|
| 0-18 m | 6 A | 18000 kg |
| 19-30 m | 8 A | 24000 kg |
| 30-36 m | 12 A | 36000 kg |
| 37-42 m | 24 A | 72000 kg |



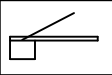
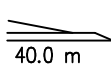
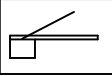
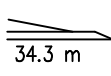
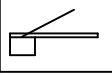
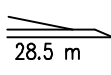
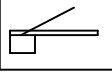
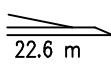
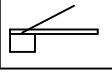
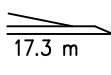
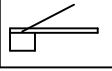
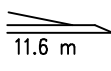
Curve di carico – Courbes de charges – Load diagrams – LastKurven – Curvas de cargas

Pmax 2400 kg

| | | | | | | | | | |
|---|---------|---|------|------|------|------|------|------|----|
|  | 7680 kg |  | 2 | 18.5 | 22.6 | 28.5 | 34.3 | 40.0 | m |
| | | 40.0 m | 2400 | 2400 | 1920 | 1500 | 1200 | 1000 | kg |
|  | 6600 kg |  | 2 | 20.0 | 22.6 | 28.5 | 34.3 | | m |
| | | 34.3 m | 2400 | 2400 | 2180 | 1680 | 1350 | | kg |
|  | 6030 kg |  | 2 | | 22.6 | 28.5 | | | m |
| | | 28.5 m | 2400 | | 2400 | 1900 | | | kg |
|  | 4950 kg |  | 2 | | 22.6 | | | | m |
| | | 22.6 m | 2400 | | 2400 | | | | kg |
|  | 4380 kg |  | 2 | | 17.3 | | | | m |
| | | 17.3 m | 2400 | | 2400 | | | | kg |
|  | 3300 kg |  | 2 | | 11.6 | | | | m |
| | | 11.6 m | 2400 | | 2400 | | | | kg |



Pmax 2000 kg

| | | | | | | | | | |
|---|---------|---|------|--|------|------|------|------|----|
|  | 7680 kg |  | 2 | | 22.6 | 28.5 | 34.3 | 40.0 | m |
| | | 40.0 m | 2000 | | 2000 | 1500 | 1200 | 1000 | kg |
|  | 6600 kg |  | 2 | | 22.6 | 28.5 | 34.3 | | m |
| | | 34.3 m | 2000 | | 2000 | 1680 | 1350 | | kg |
|  | 6030 kg |  | 2 | | | 28.5 | | | m |
| | | 28.5 m | 2000 | | | 2000 | | | kg |
|  | 4950 kg |  | 2 | | 22.6 | | | | m |
| | | 22.6 m | 2000 | | 2000 | | | | kg |
|  | 4380 kg |  | 2 | | 17.3 | | | | m |
| | | 17.3 m | 2000 | | 2000 | | | | kg |
|  | 3300 kg |  | 2 | | 11.6 | | | | m |
| | | 11.6 m | 2000 | | 2000 | | | | kg |

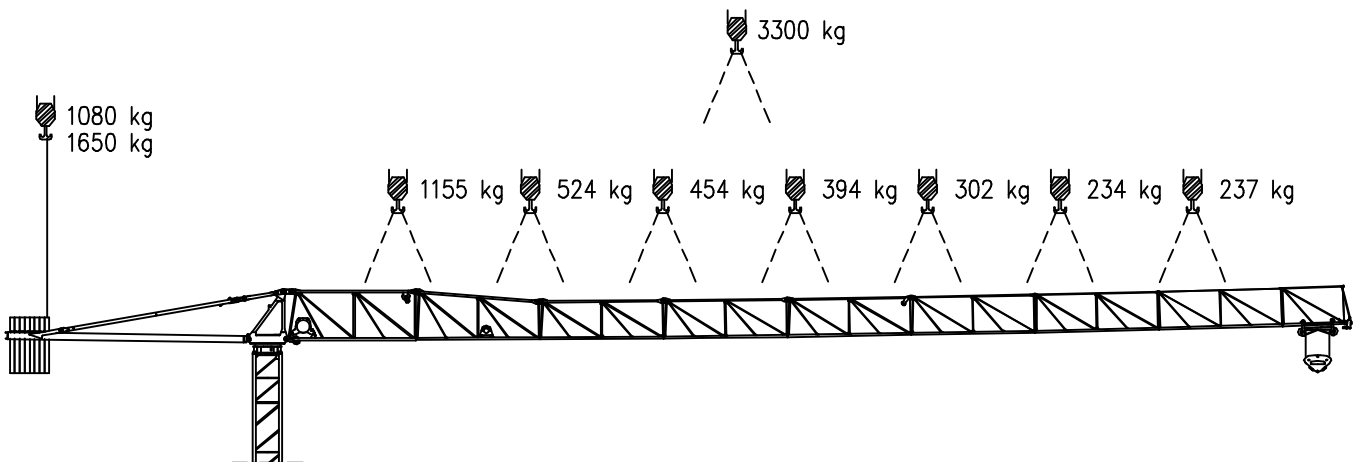
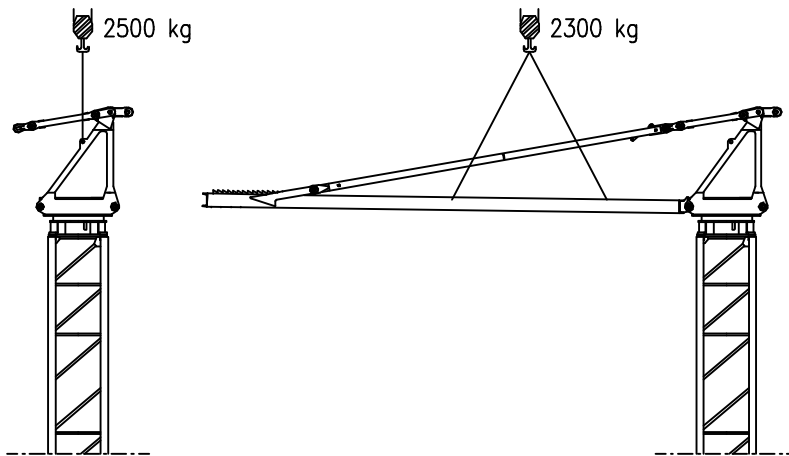
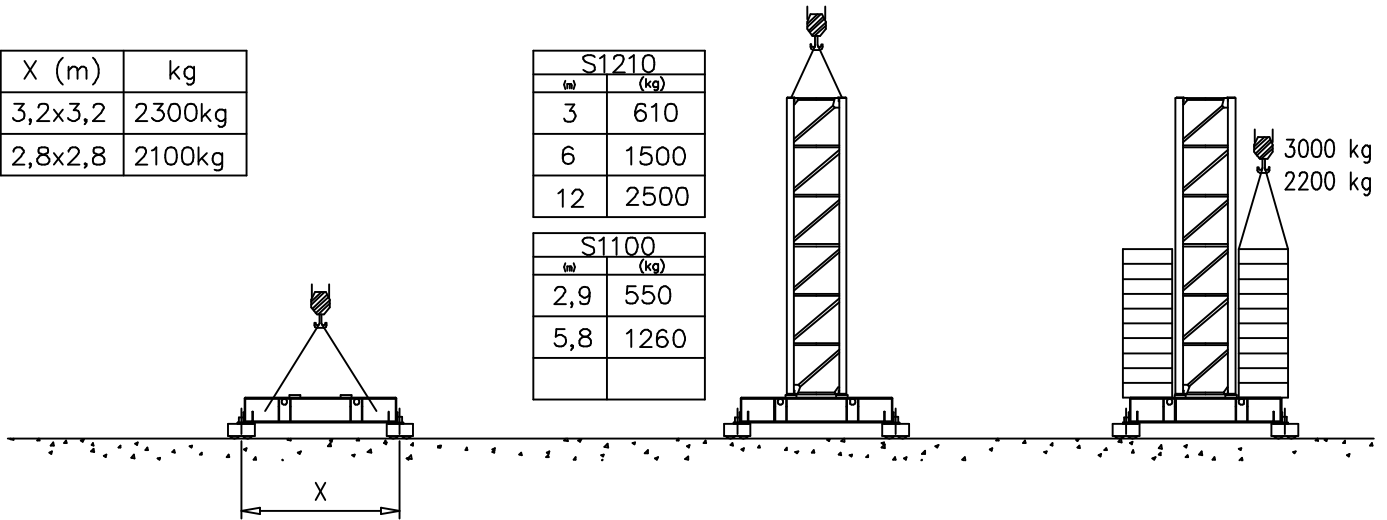


Montaggio – Montage – Erection – Montage – Montaje – Montagem


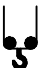






| X (m) | kg |
|---------|--------|
| 3,2x3,2 | 2300kg |
| 2,8x2,8 | 2100kg |

| S1210 | |
|-------|------|
| (m) | (kg) |
| 3 | 610 |
| 6 | 1500 |
| 12 | 2500 |

| S1100 | |
|-------|------|
| (m) | (kg) |
| 2,9 | 550 |
| 5,8 | 1260 |
| | |



Meccanismi – Mechanisms – Mécanismes – Antriebe – Mecanismos

| | | | | | | | |
|--|---|---|------------|----------|------------------------------|--------|---|
| Sollevamento M07.47 Hoisting Levage Heben Elevaciòn Elevaçao |  | 1a | 3 m/min | 2400 kg | 7.5 kW | 22kVA | |
| | | 2a | 16 m/min | 2400 kg | | | |
| | | 3a | 36 m/min | 1000 kg | | | |
| | | 4a | 40 m/min | 800 kg | | | |
| | | 5a | 47 m/min | 400 kg | | | |
| Sollevamento V07.36 Hoisting Levage Heben Elevaciòn Elevaçao |  | 1a | 3 m/min | 2000 kg | 7.5 kW | 22kVA | |
| | | 2a | 16 m/min | 2000 kg | | | |
| | | 3a | * 26 m/min | 1500 kg | | | |
| | | 4a | 36 m/min | 1000 kg | | | |
| | | 5a | * 38 m/min | 600 kg | | | |
| | | | * Optional | | | | |
| Carrello Trolleying Distribution Katzfahren Distribuciòn Distribuiçao |  |  | 1a | 5 m/min | 2400 kg | 1.5 kW | Potenza elettrica necessaria Puissance électrique nécessaire Necessary electric power Anschlusswert – Potencia |
| | | | 2a | 17 m/min | 2400 kg | | |
| | | | 3a | 34 m/min | 2000 kg | | |
| Rotazione Slewing Orientation Schwenken Orientaciòn Rotaçao |  |  | 1a | 0 → 0.2 | giri/min tr/min rp/min | 4 kW | |
| | | | 2a | 0 → 0.4 | | | |
| | | | 3a | 0 → 0.7 | | | |
| Traslazione Travelling Translation Kranfahren Traslaciòn Translaçao |  |  | 1a | 0 → 8 | m/min | 3.7 kW | |
| | | | 2a | 0 → 18 | | | |

| | |
|---|--------------|
| Rete elettrica – Réseau – Mains supply – Netzstrom – Red – Rede electrica | 400V – 50 Hz |
| | 480V – 60 Hz |

AFM Gru FMgru s.r.l.
via Emilia 11-29010 Pontenure PC ITALY
tel. 0523/510446 ric.aut. fax 0523/510365
www.fmgru.com e-mail: info@fmgru.com

FEM 1.001
2000/14/CE



Documento commerciale non contrattuale
Per tutte le informazioni tecniche riferirsi
alle corrispondenti istruzioni

Unverbindliches Vertriebsdokument.
Für technische Informationen, siehe die
entsprechenden Anweisungen.

This commercial document is not legally
binding. For any technical information, please
refer to the corresponding instructions.

Documento commercial non contractual
Para cualquier información técnica,
ver la noticia correspondiente.

| | | | |
|--------------------|----------|-----|----------|
| Code: 15ICA37T15A0 | | | |
| Ed. | Data | Rev | Data |
| 1 | 24.07.06 | 2 | 18.01.07 |