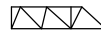
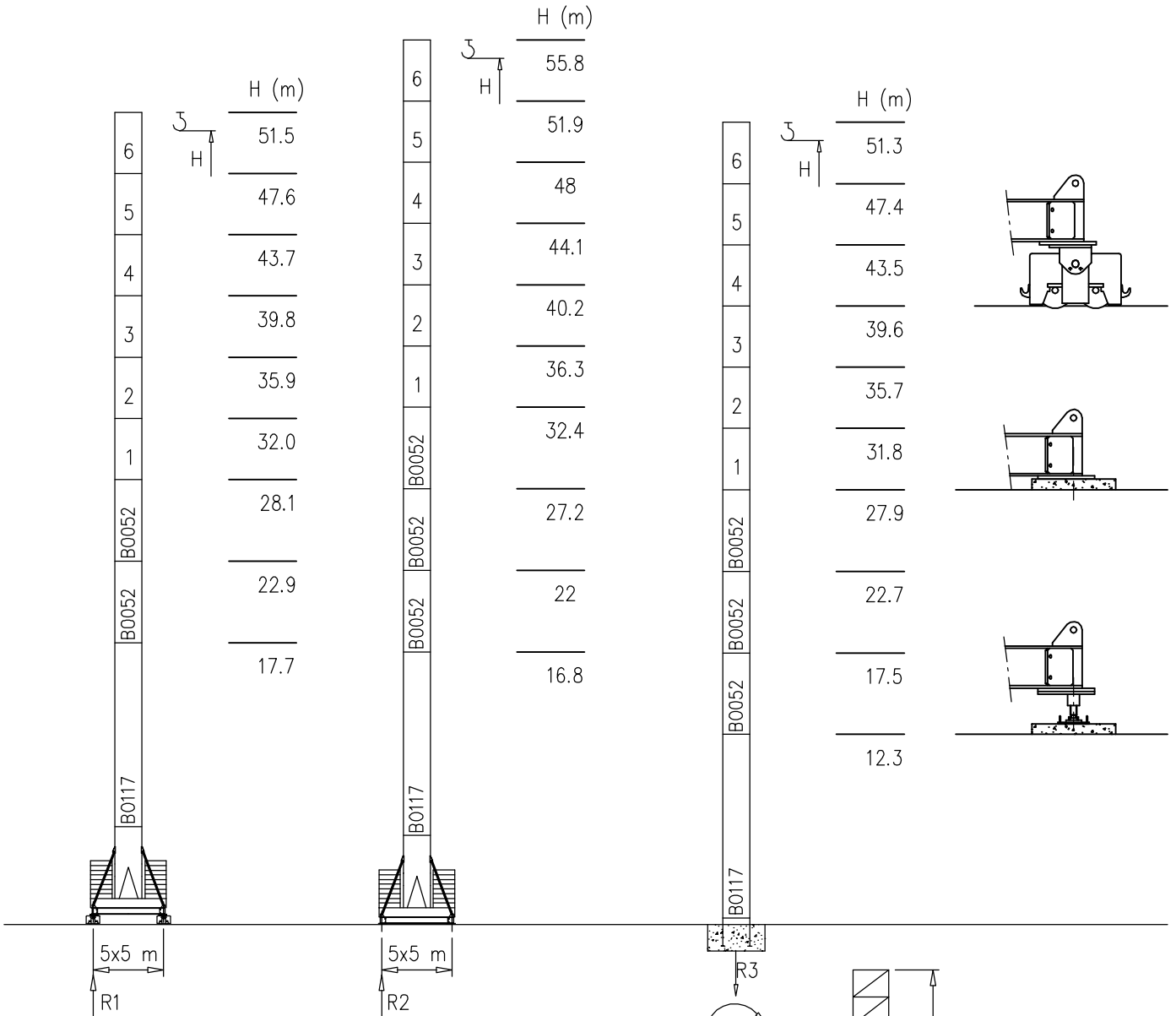


- S1700 – 1.70x1.70 m
- S2050 – 2.05x2.05 m

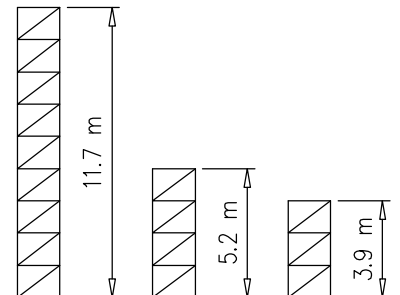
Torre/Reazioni – Masts/Reactions – Mat/Réactions – Maste/Eckdrücke – Mástil/Reacciones – Tramo/Reacções

S1700

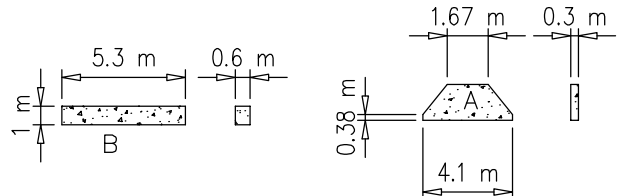
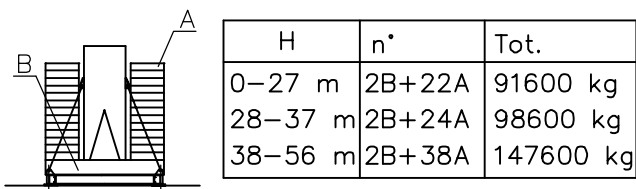
 20 m \rightarrow 65 m



| H=38–56 m | | H=0–37 m | |
|-----------|--------|----------|--------|
| R1 | 145 t | R1 | 121 t |
| R2 | 131 t | R2 | 110 t |
| R3 | 89 t | R3 | 77 t |
| M | 485 tm | M | 390 tm |

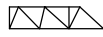


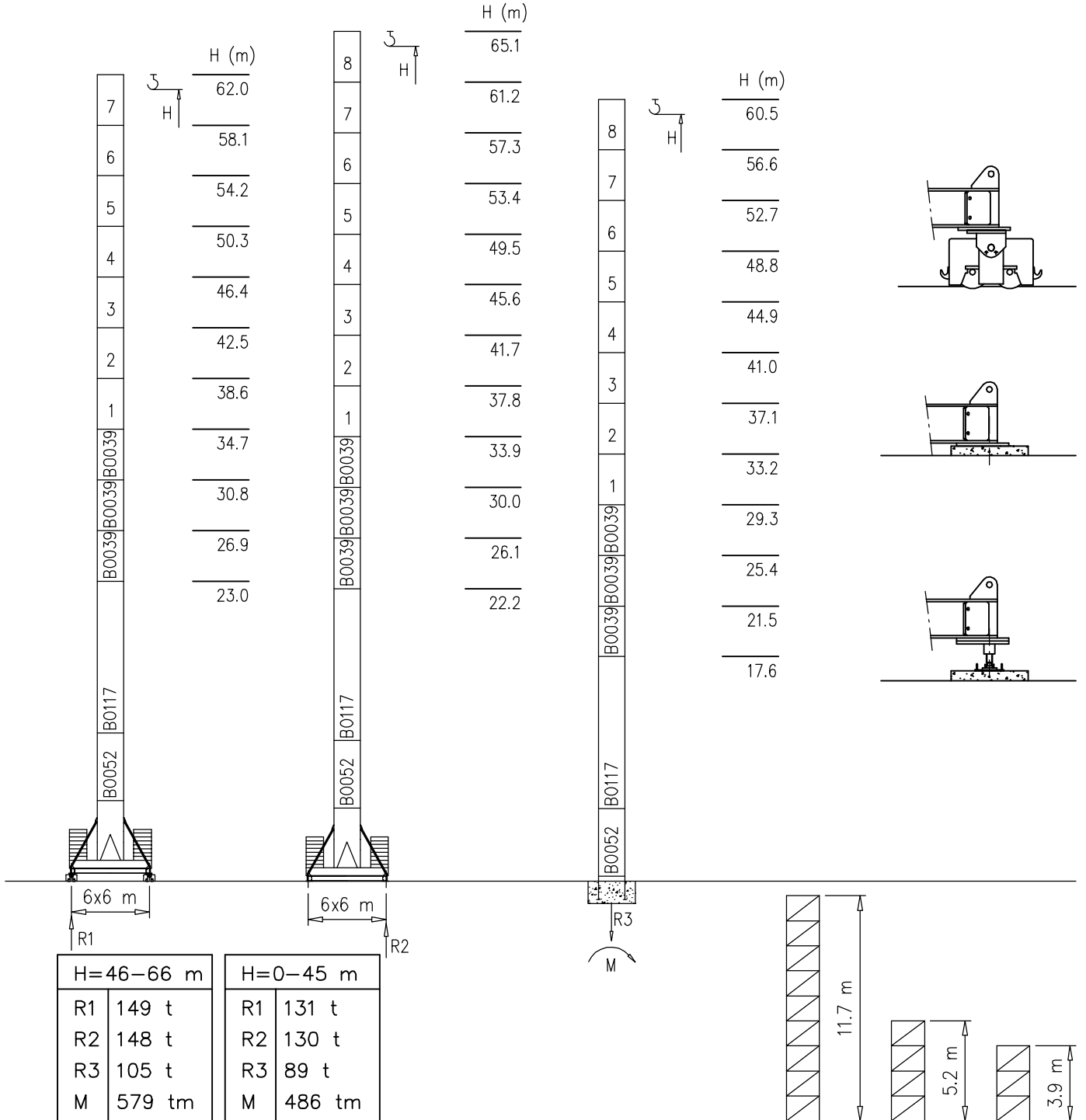
Peso zavorra – Ballast weight – Poids du lest – Ballastgewicht – Peso de lastre



Torre/Reazioni – Masts/Reactions – Mat/Réactions – Maste/Eckdrücke – Mástil/Reacciones – Tramo/Reacções

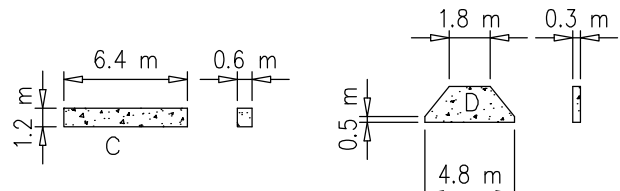
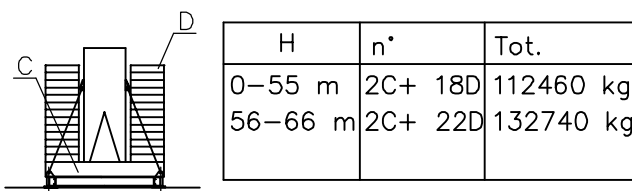
S2050

 20 m \rightarrow 65 m



| H=46–66 m | | H=0–45 m | |
|-----------|--------|----------|--------|
| R1 | 149 t | R1 | 131 t |
| R2 | 148 t | R2 | 130 t |
| R3 | 105 t | R3 | 89 t |
| M | 579 tm | M | 486 tm |

Peso zavorra – Ballast weight – Poids du lest – Ballastgewicht – Peso de lastre

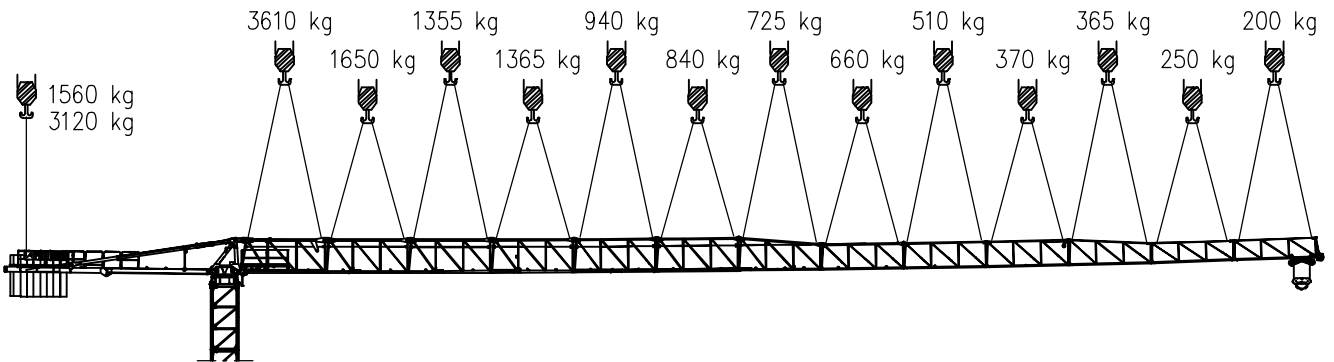
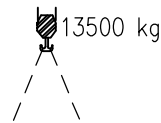
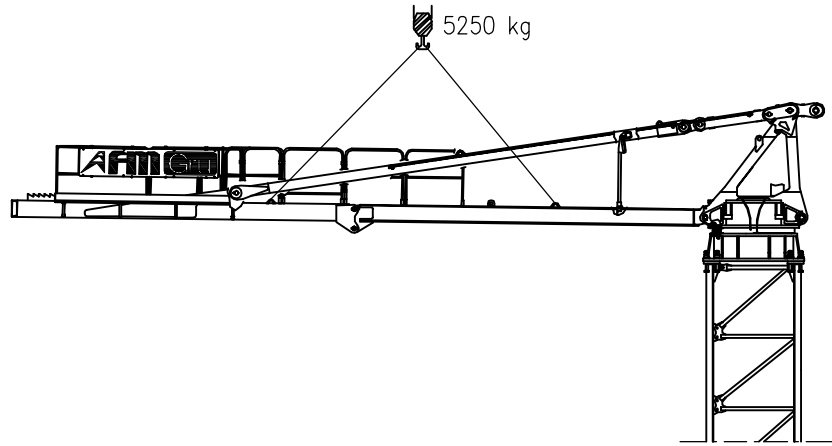
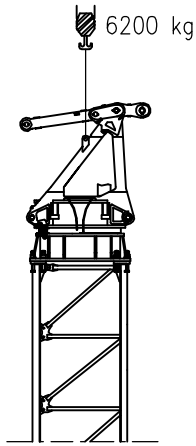
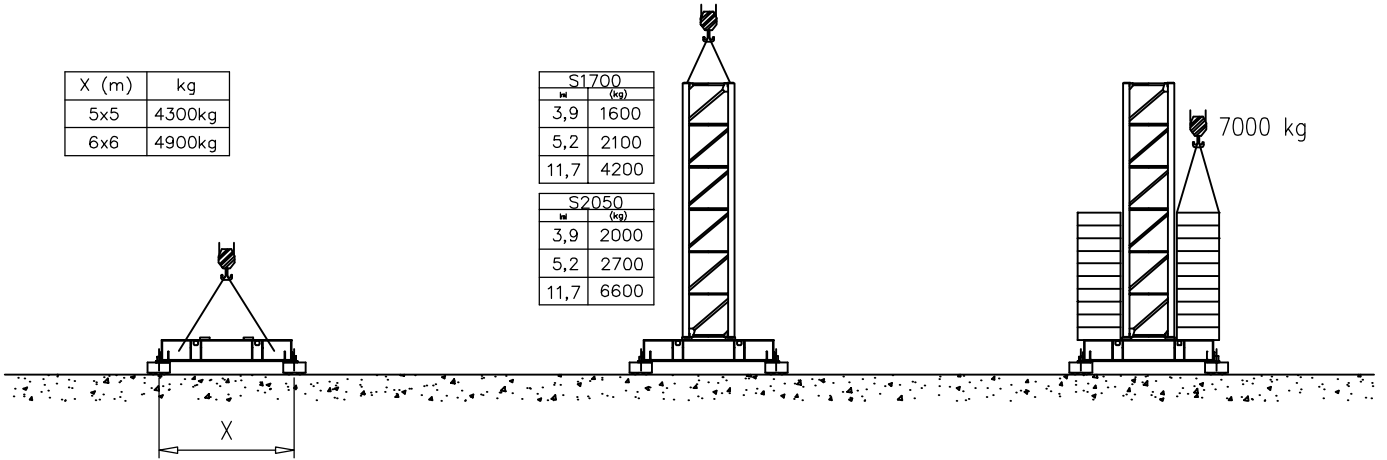


Montaggio – Montage – Erection – Montage – Montaje – Montagem

| X (m) | kg |
|-------|--------|
| 5x5 | 4300kg |
| 6x6 | 4900kg |

| S1700 | |
|-------|------|
| H | (kg) |
| 3,9 | 1600 |
| 5,2 | 2100 |
| 11,7 | 4200 |

| S2050 | |
|-------|------|
| H | (kg) |
| 3,9 | 2000 |
| 5,2 | 2700 |
| 11,7 | 6600 |



Meccanismi – Mechanisms – Mécanismes – Antriebe – Mecanismos

| | | | | | | | |
|--|--|--|----|------------|---------|-------|---|
| Sollevamento V33.60 Hoisting Levage Heben Elevaciòn Elevaçao | | | 1a | 4 m/min | 4000 kg | 24 kW | V33.60 40 kVA |
| | | | 2a | 20m/min | 4000 kg | | |
| | | | 3a | 32 m/min | 3500 kg | | |
| | | | 4a | 46 m/min | 2200 kg | | |
| | | | 5a | 60 m/min | 1600 kg | | |
| | | | 1a | 2 m/min | 8000 kg | | |
| | | | 2a | 10 m/min | 8000 kg | | |
| | | | 3a | 16 m/min | 7000 kg | | |
| | | | 4a | 23 m/min | 4400 kg | | |
| | | | 5a | 30 m/min | 3200 kg | | |
| Sollevamento V45.90 Hoisting Levage Heben Elevaciòn Elevaçao | | | 1a | 4 m/min | 4000 kg | 33 kW | V45.90 58 kVA |
| | | | 2a | 18 m/min | 4000 kg | | |
| | | | 3a | 36 m/min | 4000 kg | | |
| | | | 4a | 56 m/min | 3000 kg | | |
| | | | 5a | 74 m/min | 2000 kg | | |
| | | | 6a | 90 m/min | 1000 kg | | |
| | | | 1a | 2 m/min | 8000 kg | | |
| | | | 2a | 9 m/min | 8000 kg | | |
| | | | 3a | 18 m/min | 8000 kg | | |
| | | | 4a | 28 m/min | 6000 kg | | |
| | | | 5a | 37 m/min | 4000 kg | | |
| | | | 6a | 45 m/min | 1000 kg | | |
| Carrello Trolleying Distribution Katzfahren Distribuciòn Distribuição | | | 1a | OP 5 m/min | 6000 kg | 3 kW | Potenza elettrica necessaria Puissance électrique nécessaire Necessary electric power Anschlusswert – Potencia |
| Rotazione Slewing Orientation Schwenken Orientaciòn Rotaçao | | | 2a | 25 m/min | 6000 kg | | |
| | | | 3a | 50 m/min | 3000 kg | | |
| Traslazione Travelling Translation Kranfahren Traslaciòn Traslaçao | | | 1a | OP 0 → 5 | 3.7 kW | | |
| | | | 2a | 0 → 20 | | | |

Rete elettrica – Réseau – Mains supply – Netzstrom – Red – Rede electrica 400V – 50 Hz

AFM Gru FMgru s.r.l.
via Emilia 11-29010 Pontenure PC ITALY
tel. 0523/510446 ric.aut. fax 0523/510365
www.fmgru.com e-mail: info@fmgru.com

FEM 1.001
2000/14/CE



Documento commerciale non contrattuale
Per tutte le informazioni tecniche riferirsi
alle corrispondenti istruzioni

Unverbindliches Vertriebsdokument.
Für technische Informationen, siehe die
entsprechenden Anweisungen.

This commercial document is not legally
binding. For any technical information, please
refer to the corresponding instructions.

Documento comercial no contractual
Para cualquier información técnica,
ver la noticia correspondiente.

| | | |
|--------------------|----------|------------|
| Code: 15/CA37T50A0 | | |
| Ed. | Data | Rev Data |
| 1 | 30.09.08 | 0 30.09.08 |