

un gigante per piccoli spazi



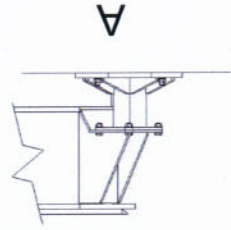
# CITY CRANE Gulliver VR35/100



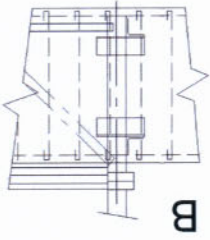
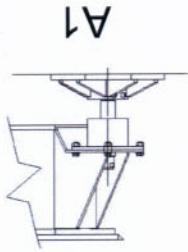
T.G.M.

# GULLIVER

stabilizzatore fisso



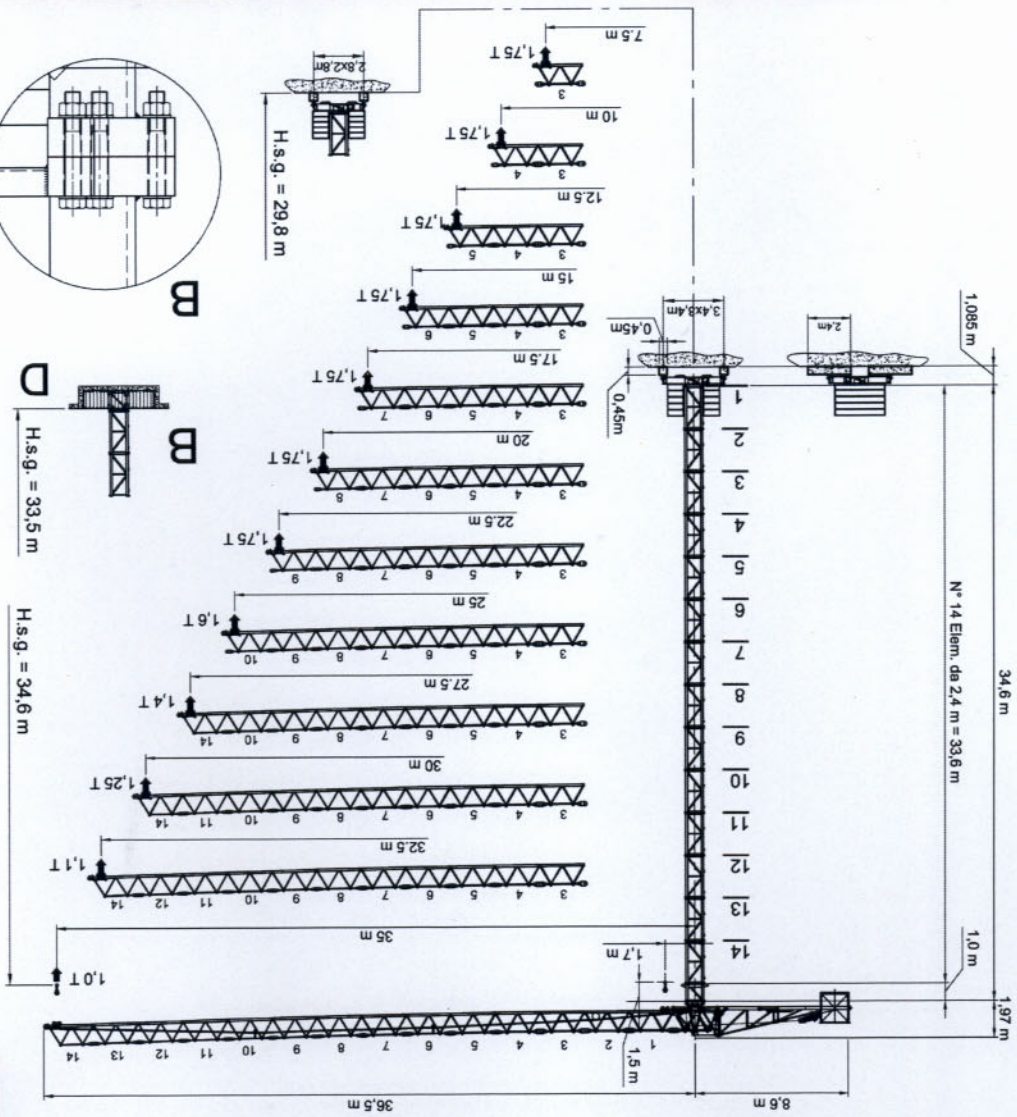
stabilizzatore regolabile



B

City crane  
VR 35-100

GRU A TORRE A MONTAGGIO RAPIDO  
CITY TOWER CRANE

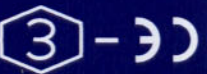


N° PR2006A000033

INDUSTRIALE

INVENZIONE

BREVETTO PER

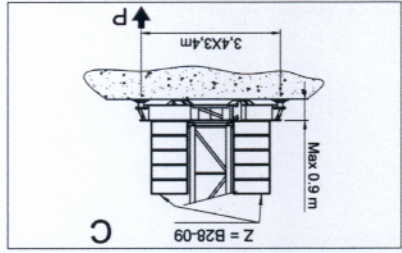


T.G.M.

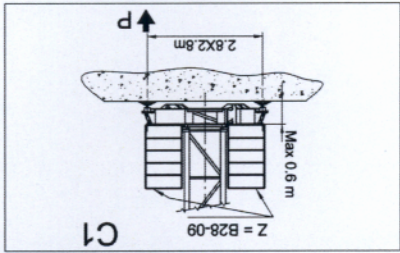


RAGGI E PORTATE - RADIUS AND S.W.L. - AUSLADUNG UND TRAGFAHIGKEIT - PORTEE ET CHARGE UTILE

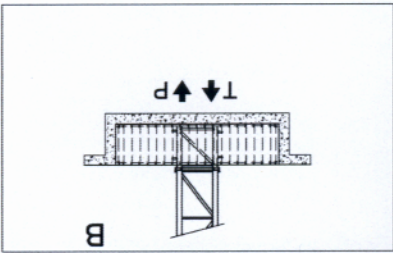
| Portata max / Max s.w.l. Charge max / Max. Tragfähigkeit |      | Braccio / Jib Ausleger / Fläche |       | Campo di portata max da Max s.w.l. range from Charge maxi de Max. Tragfähigkeit von |      |
|--|------|---------------------------------|-------|---|------|
| a  | b    | m.                              | 1,4 m | 10  | 7,5  |
| 5  | 1750 | 1750                            | 1750  | 1750  | 1750 |
| 6  | 1750 | 1750                            | 1750  | 1750  | 1750 |
| 7.5  | 1750 | 1750                            | 1750  | 1750  | 1750 |
| 8  | 1750 | 1750                            | 1750  | 1750  | 1750 |
| 9  | 1750 | 1750                            | 1750  | 1750  | 1750 |
| 10   | 1750 | 1750                            | 1750  | 1750  | 1750 |
| 11   | 1750 | 1750                            | 1750  | 1750  | 1750 |
| 12.5   | 1750 | 1750                            | 1750  | 1750  | 1750 |
| 13   | 1750 | 1750                            | 1750  | 1750  | 1750 |
| 14   | 1750 | 1750                            | 1750  | 1750  | 1750 |
| 15   | 1750 | 1750                            | 1750  | 1750  | 1750 |
| 16   | 1750 | 1750                            | 1750  | 1750  | 1750 |
| 17.5   | 1750 | 1750                            | 1750  | 1750  | 1750 |
| 18   | 1750 | 1750                            | 1750  | 1750  | 1750 |
| 19   | 1750 | 1750                            | 1750  | 1750  | 1750 |
| 20   | 1750 | 1750                            | 1750  | 1750  | 1750 |
| 21   | 1750 | 1750                            | 1750  | 1750  | 1750 |
| 22.5   | 1750 | 1750                            | 1750  | 1750  | 1750 |
| 23   | 1613 | 1635                            | 1701  | 1734  | 1750 |
| 24   | 1505 | 1526                            | 1588  | 1619  | 1671 |
| 25   | 1441 | 1461                            | 1521  | 1550  | 1600 |
| 26   | 1382 | 1401                            | 1458  | 1487  |      |
| 27.5   | 1301 | 1319                            | 1373  | 1400  |      |
| 28   | 1276 | 1293                            | 1347  |   |      |
| 29   | 1228 | 1245                            | 1297  |   |      |
| 30   | 1184 | 1200                            | 1250  |   |      |
| 31   | 1142 | 1158                            |       |   |      |
| 32.5   | 1085 | 1100                            |       |   |      |
| 33   | 1067 |                                 |       |   |      |
| 34   | 1032 |                                 |       |   |      |
| 35   | 1000 |                                 |       |   |      |



H.S.C., LEFT DE BASE MAXI ET REACTIONS HAKENHOHEN, MAXIMALE ZENTRALBALLASTE UND ECKKRAFT



ALTEZZA SOTTOGANCIO, ZAVORRA DI BASE, REAZIONI H.U.H MAX. BASE BALLAST AND CORNER PRESSURE



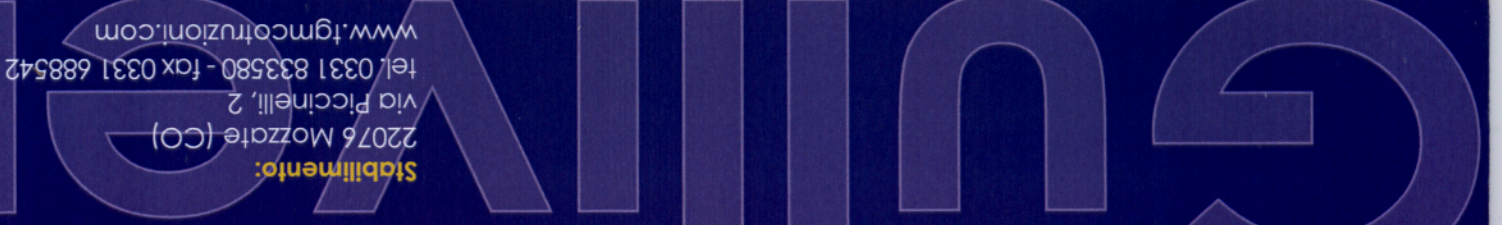
SU PUNTO / STATIONARY SUR PIEDS DE SCÈLEMENT / STATIONAR

| H    | Z    | P MAX. |
|------|------|--------|
| 15.1 | 24   | 22     |
| 17.5 | 24   | 22     |
| 19.9 | 24   | 22     |
| 22.3 | 24   | 22     |
| 24.7 | 24   | 22     |
| 27.1 | 28   | 24     |
| 29.5 | 28   | 24     |
| 31.9 | 32   | 27     |
| 34.3 | 32   | 27     |
| m.   | (l.) | (l.)   |

| H    | Z    | P MAX. |
|------|------|--------|
| 15.1 | 36   | 27     |
| 17.5 | 36   | 27     |
| 19.9 | 36   | 27     |
| 22.3 | 36   | 27     |
| 24.7 | 36   | 27     |
| 27.1 | 40   | 30     |
| 29.5 | 40   | 30     |
| -    | -    | -      |
| -    | -    | -      |
| m.   | (l.) | (l.)   |

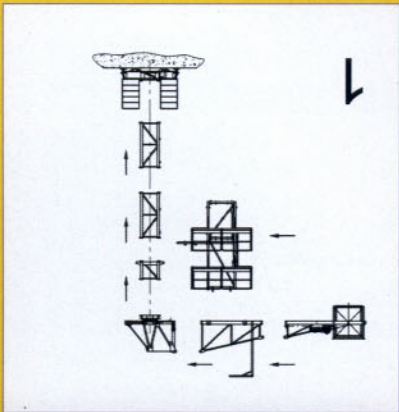
| H    | T MAX. | P MAX. |
|------|--------|--------|
| 14.3 | 1,1    | 16,5   |
| 16.7 | 1,1    | 16,5   |
| 19.1 | 1,1    | 16,5   |
| 21.5 | 1,1    | 16,5   |
| 23.9 | 1,1    | 16,5   |
| 26.3 | 1,2    | 17     |
| 28.7 | 1,2    | 17     |
| 31.1 | 1,35   | 18     |
| 33.5 | 1,35   | 18     |
| m.   | (l.)   | (l.)   |

|   |  |                                      |                       |  |   |  |   |  |            |  |
|---|--|--------------------------------------|-----------------------|--|---|--|---|--|------------|--|
| <b>Rotazione</b><br>Rotation<br>Schwenken             |  | 0,38 / 0,71 / 1,02 min <sup>-1</sup> | <b>4 HP</b><br>2,9 kW |  | <b>12 HP</b><br>CV - ch<br>kW<br>12<br>8,8<br>140 | <b>Carrozze</b><br>Tractor<br>Kräutler |   | <b>2 HP</b><br>1,4 kW<br>Progressivo - Progressive | 2040 m/min | <b>8,8 kW (12HP) 19 kW</b>   |
| <b>Velocità / Speed</b><br>Pulzance / Geschwindigkeit |  |                                      |                       |  |   | <b>Marcha</b><br>Steps<br>Gang         | <b>Velocità - speed</b><br>Charge - load<br>Geschw. - vitesse |  |            | <b>FORZA MOTRICE TOTALE</b><br>TOTAL INSTALLED POWER<br>PUISSANCE TOTALE DES MOTEURS<br>GESAMT-MOTORENLEISTUNG |
| <b>Potenza / Power</b><br>Pulzance / Leistung         |  |                                      |                       |  |   | <b>Funce - rope</b><br>Cable - seil    |   |  |            |  |

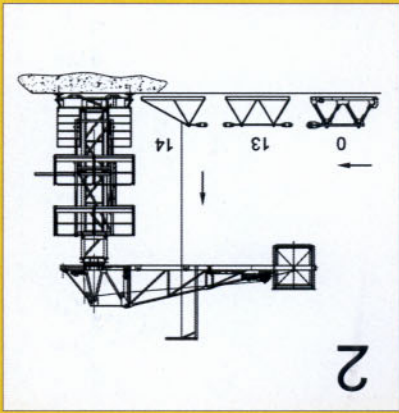


Stabilimento:  
 22076 Mozzate (CO)  
 via Piccinelli, 2  
 tel. 0331 833580 - fax 0331 688542  
 www.igmcotruzione.com

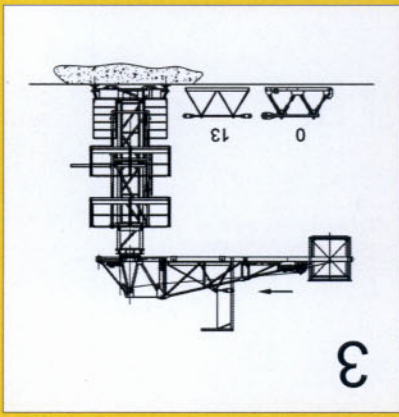
SEQUENZA DI MONTAGGIO  
ASSEMBLINGSEQUENCE  
SEQUENCE DE MONTAGE  
AUFSTELLUNGSEQUENZ



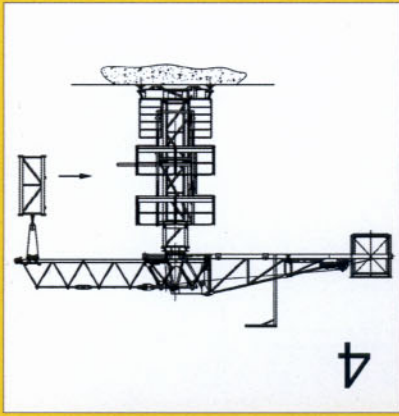
1



2



3



4

LISTA DEI PESI / PACKING LIST  
LISTE DE COLISAGE / KOLL-LISTE

| Pezzi                    | Denominazione       | Sketch | L        | W    | H    | Unit. | Peso (kg) | Total |
|--------------------------|---------------------|--------|----------|------|------|-------|-----------|-------|
| 1                        | Elemento di freccia |        | 2,508    | 0,63 | 1,23 |       | 360       |       |
| 1                        | Elemento di freccia |        | 2,806    | 0,63 | 1,23 |       | 264       |       |
| 1                        | Elemento di freccia |        | 2,806    | 0,63 | 1,23 |       | 408       |       |
| 1                        | Elemento di freccia |        | 2,806    | 0,63 | 1,23 |       | 233       |       |
| 1                        | Elemento di freccia |        | 2,806    | 0,63 | 1,23 |       | 197       |       |
| 1                        | Elemento di freccia |        | 2,806    | 0,63 | 1,23 |       | 178       |       |
| 2                        | Elemento di freccia |        | 2,737    | 0,63 | 1,12 |       | 344       |       |
| 3                        | Elemento di freccia |        | 2,737    | 0,63 | 1,12 |       | 441       |       |
| 3                        | Elemento di freccia |        | 2,690    | 0,63 | 1,18 | 125   | 375       |       |
| 1                        | Elemento di freccia |        | 2,600    | 0,63 | 1,18 |       | 120       |       |
| <b>FRECCIA COMPLETA.</b> |                     |        |          |      |      |       |           |       |
|                          |                     |        | 35 m.    | 0,63 | 1,3  |       | 2916      |       |
|                          |                     |        | 37,75 m. | 0,63 | 1,3  |       | 2916      |       |
|                          |                     |        | 32,5 m.  | 0,63 | 1,3  |       | 2791      |       |
|                          |                     |        | 30 m.    | 0,63 | 1,3  |       | 2666      |       |
|                          |                     |        | 27,5 m.  | 0,63 | 1,3  |       | 2541      |       |
|                          |                     |        | 25 m.    | 0,63 | 1,3  |       | 2421      |       |
|                          |                     |        | 22,5 m.  | 0,63 | 1,3  |       | 2274      |       |
|                          |                     |        | 20 m.    | 0,63 | 1,3  |       | 2127      |       |
|                          |                     |        | 17,5 m.  | 0,63 | 1,3  |       | 1960      |       |
|                          |                     |        | 15 m.    | 0,63 | 1,3  |       | 1808      |       |
|                          |                     |        | 12,5 m.  | 0,63 | 1,3  |       | 1636      |       |
|                          |                     |        | 10 m.    | 0,63 | 1,3  |       | 1458      |       |
|                          |                     |        | 7,5 m.   | 0,63 | 1,3  |       | 1281      |       |

| Pezzi | Denominazione  | Sketch | L     | W     | H     | Unit. | Peso (kg) | Total |
|-------|--|--------|-------|-------|-------|-------|-----------|-------|
| 1     | Controcassa giravole, quadro elettrico. Counterjib-turntable, electrical box. Contrefiche tournante, armoire électrique. |        | 4,25  | 1,01  | 1,7   |       | 1360      |       |
| 1     | Elemento controreccia centrale. Central counterjib. / Contrefiche centre.  |        | 3,37  | 0,85  | 1,66  |       | 440       |       |
| 1     | Porta-blocchi, organo sollevamento, hoisting winch.  |        | 2,73  | 1,13  | 1,97  |       | 1070      |       |
| 12    | Blocchi di contrappeso Counterweight block. Contrepoids. Gegengewichtsblocke.  |        | 1,55  | 0,14  | 0,64  | 460   | 5520      |       |
| 1     | Elemento di spinta   |        | 1,0   | 1,11  | 1,51  |       | 427       |       |
| 1     | Elemento di torre Tower element. Element de mât. Turmsäule.  |        | 2,4   | 1,11  | 1,11  |       | 377       |       |
| 1     | Gabbia di montaggio  |        | 4,735 | 1,6   | 1,54  |       | 1350      |       |
| 1     | Tronchetto di fondazione Elementi a sceler. Fundamentanker.  |        | 1,075 | 1,11  | 1,11  |       | 334       |       |
| 1     | Trave principale di base   |        | 4,16  | 2,4   | 0,605 | -     | 1083      |       |
| 1     | Trave di base  |        | 1,15  | 0,3   | 0,49  | 172   | 344       |       |
| 2     | Semi-trave di base   |        | 1,575 | 0,3   | 0,49  | 225   | 450       |       |
| 24    | Blocco di zavorra Base ballast block. Last de base.  |        | 2,800 | 0,360 | 0,900 | 2000  | 48000     |       |
| 22    | Grundballastblocken  |        | 2,800 | 0,360 | 0,900 | 2000  | 44000     |       |